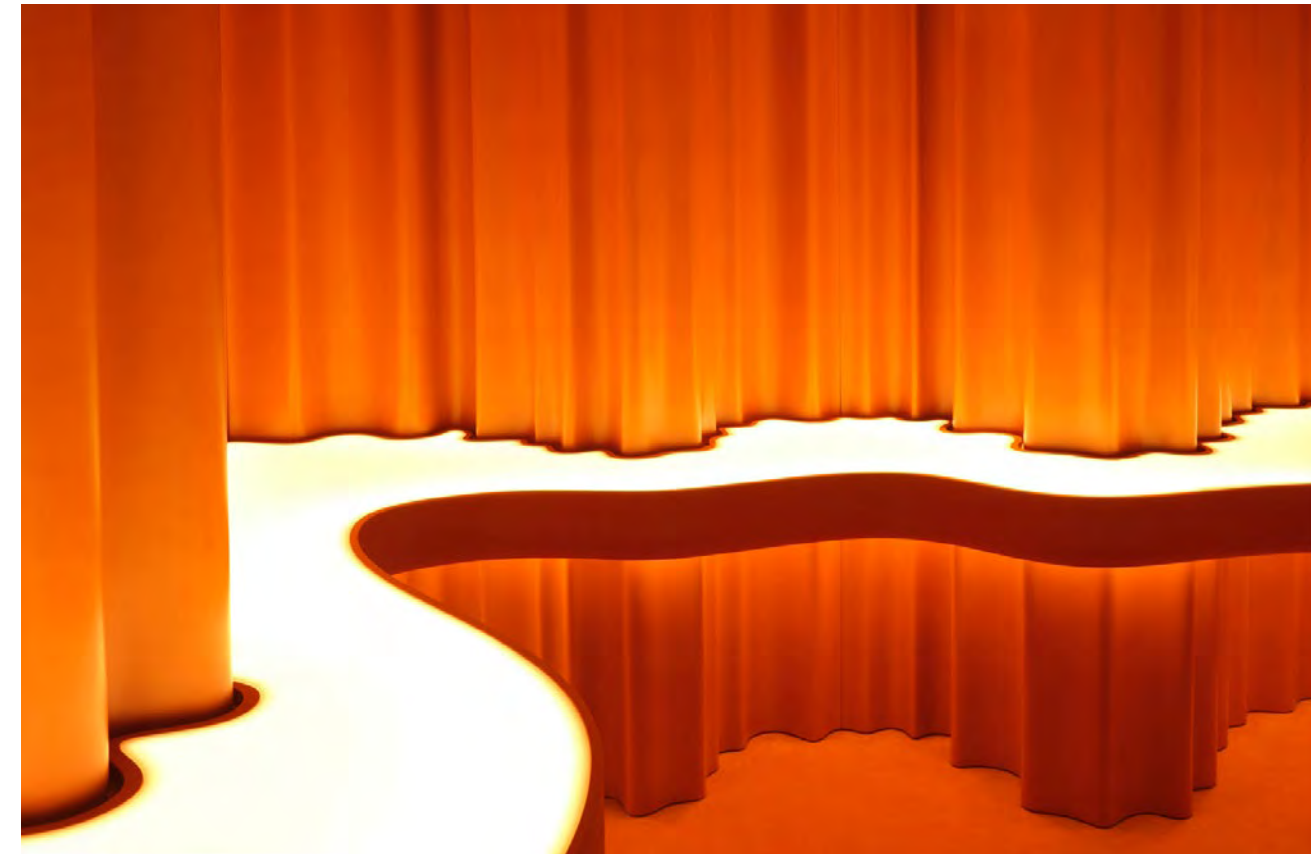
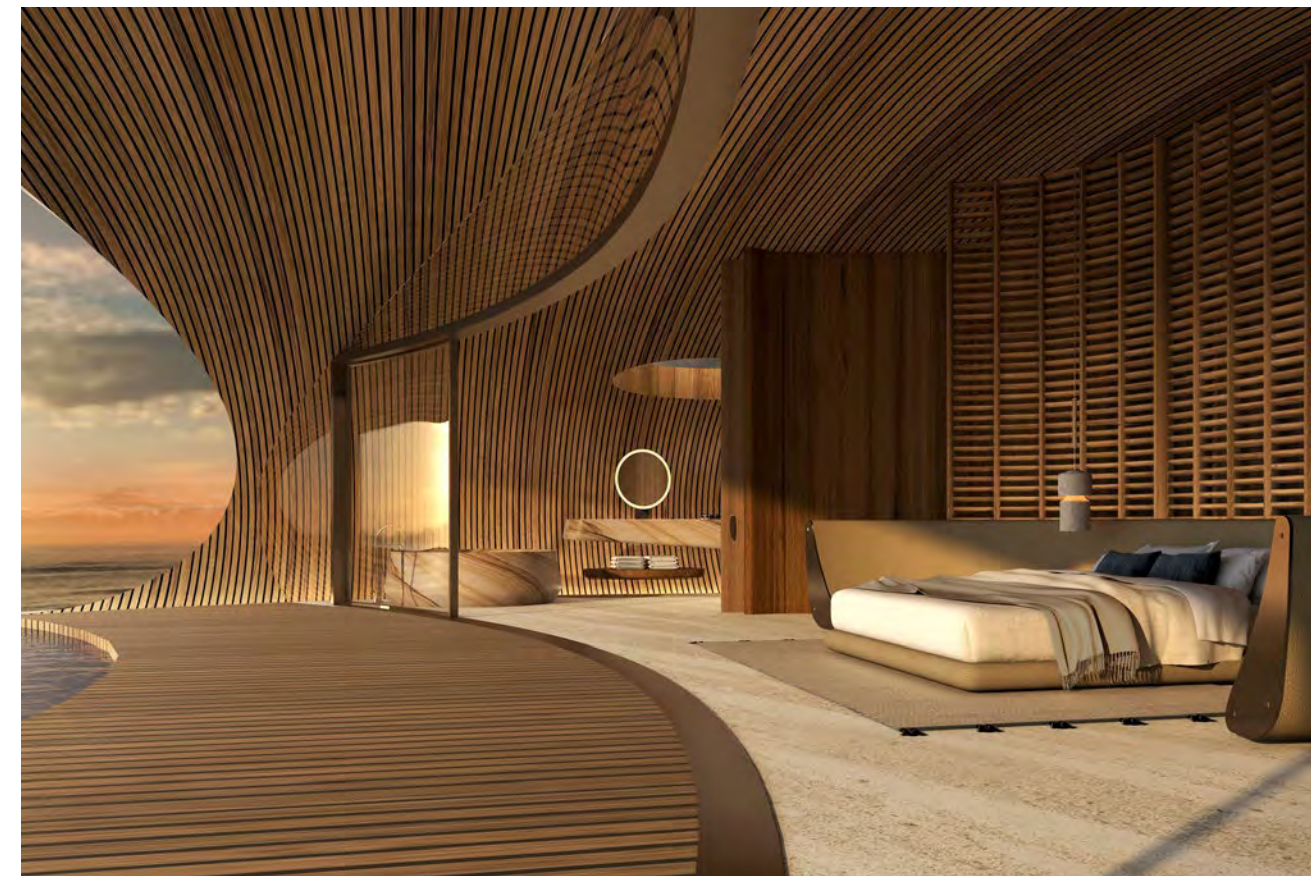




GLOBAL HOTEL FLAGSHIP



ALCHEMY PROJECT

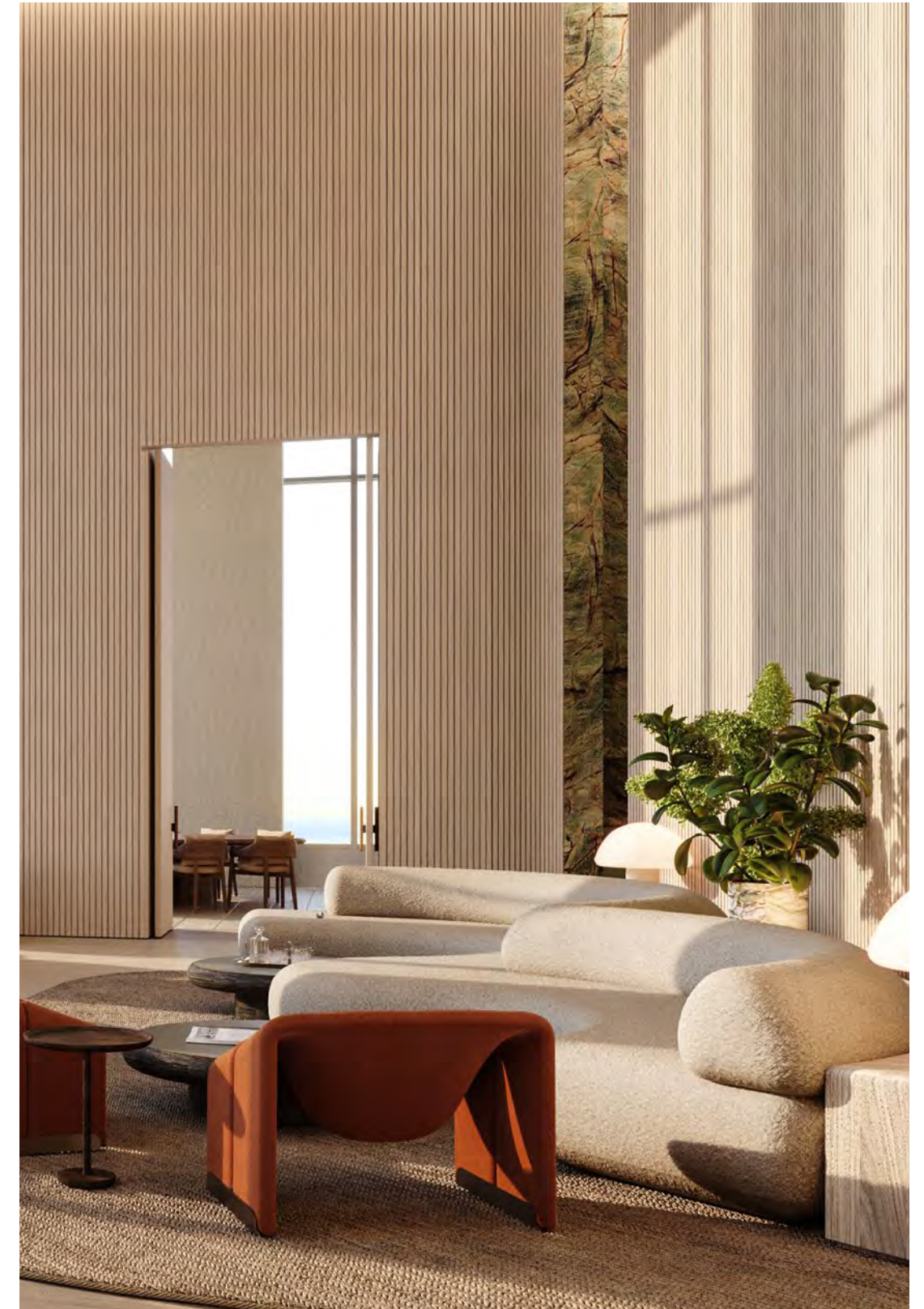


DESERT ROCK, SAUDI ARABIA

Building Amenities

Forma will include a five-star amenity offering and over 20,000SF of amenity space designed by international, award-winning Studio Paolo Ferrari.

- Concierge
- Resident Services Director
- Grand Lobby and custom art piece designed by Frank Gehry
- The Grand Suite: Chef's Kitchen and Private Dining Room, Lounge, Games Room, Theatre, and Outdoor Terrace with BBQ
- Health & Wellness Retreat: Spa, Sauna, Jacuzzi, Cardio and Weight Training, Spin Studio and Yoga Retreat
- Creator's Club: Co-Working Lounge, Recording Studio, Private Work Spaces and Maker Studio

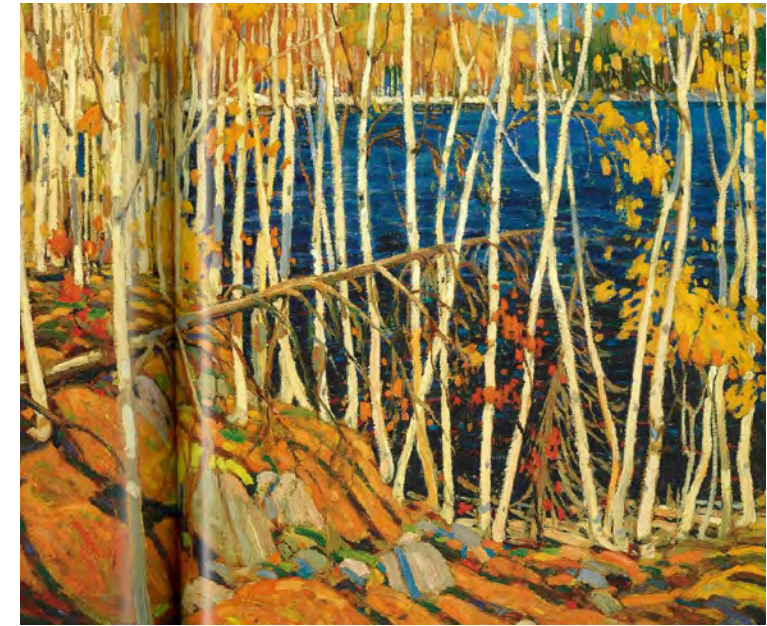




FRANK GEHRY-DESIGNED LOBBY

The vaulted limestone clad entry hall is an architectural masterpiece, as one would expect from Gehry. Ceiling-height windows wash the chamber in sunlight which bounces from the sculptural reception desk across the warm Douglas Fir surfaces and guest seating to be absorbed by the stunning art installation above. Hand-crafted and installed by Frank Gehry's design team, the sculptural ceiling fixture was inspired by the work of The Group of Seven and Tom Thomson, painters dear to Gehry and prominently displayed at the nearby Art Gallery of Ontario.

For the sculpture, FOGA started with the motif of a golden maple leaf. Rendered in copper, the leaves were tiled to create an undulating surface that would evoke the movement and play of light across Lake Ontario, an important vista for the south-facing suites and a significant reference for the tower design.



TOM THOMSON PAINTING

TOP: IN THE NORTHLAND
BOTTOM: AUTUMN FOLIAGE

Health and Wellness Retreat

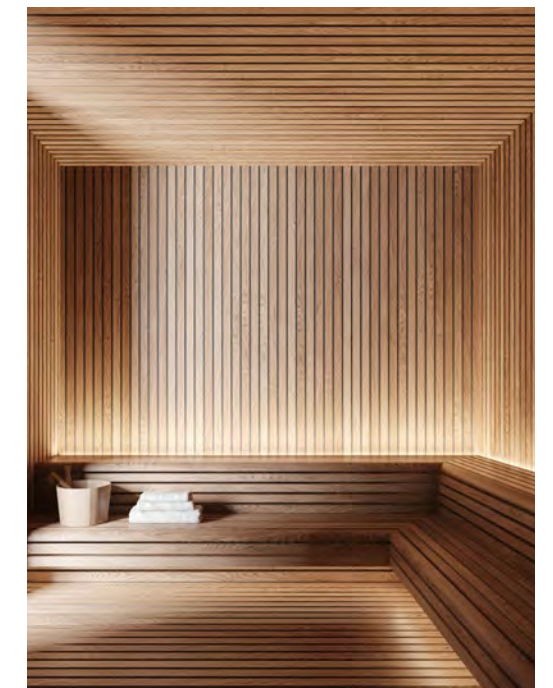
Designed in tune with body and mind wellness, the interiors contrast robust materials with softly sculptural forms. There are spaces for both restorative and muscle-building exercises, including rooms dedicated to cardio and weight training, spinning, yoga, personal training, and even boxing. Combine the latest equipment with exciting views and every experience becomes a dynamic one.



CARDIO AND WEIGHT TRAINING



JACUZZI



SAUNA

Creator's Club

Forma's luxury co-working spaces offer a variety of inspired, and inspiring, zones to motivate the resident creative. From quiet and homey to broad, bold, and artistic, the Creator's Club features semi-private alcoves as well as centralized lounge areas and boardrooms; it is ideal for focused work and virtual calls, informal breakouts, and group meetings. Positive and enlivening, these productive spaces are a joy to spend time in. A nearby games and billiards room encourages work-life balance.



MEETING ROOMS



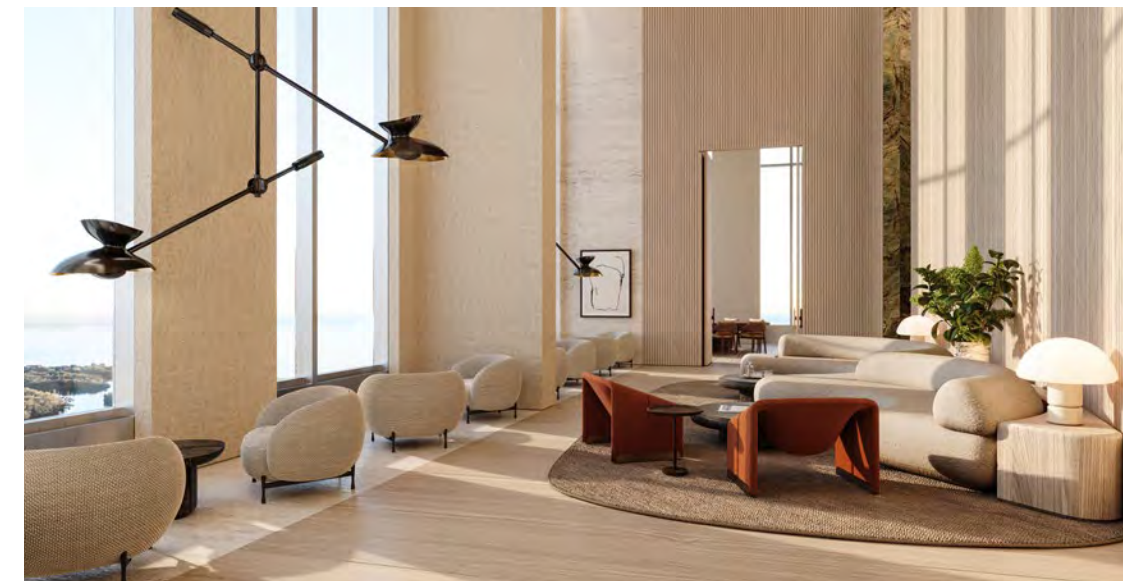
CO-WORKING LOUNGE

The Grand Suite

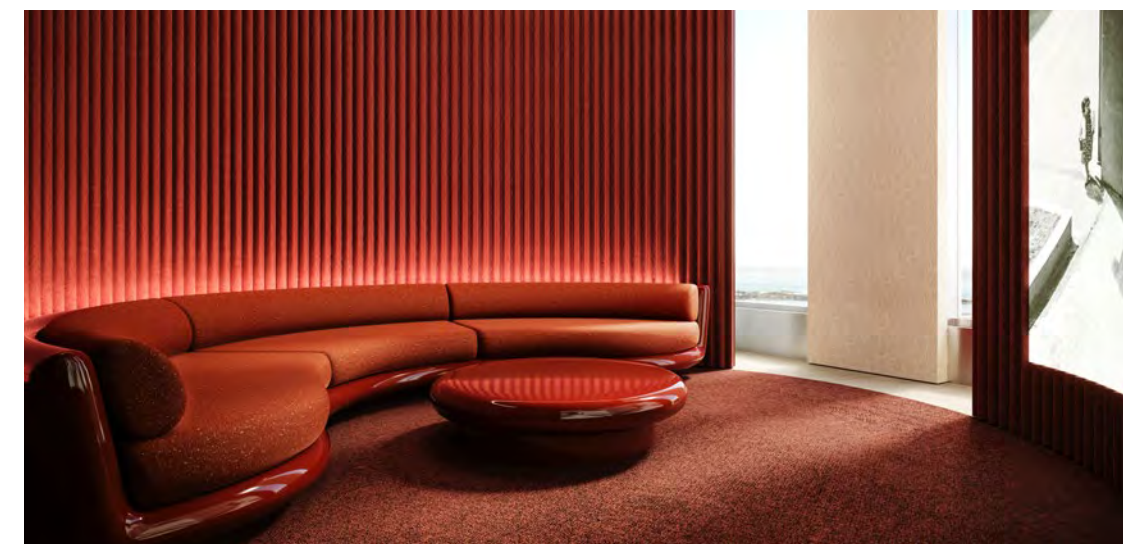
Flexible and dramatic extensions to the private home, the Grand Suite serves as a luxury entertainment space for both intimate events and milestone celebrations. Furnished with a bar, lounge, dining room, a games room and a chef's kitchen, the Grand Suite delivers the ultimate hospitality experience for all Forma homeowners and their guests.



PRIVATE DINING AND CHEF'S KITCHEN



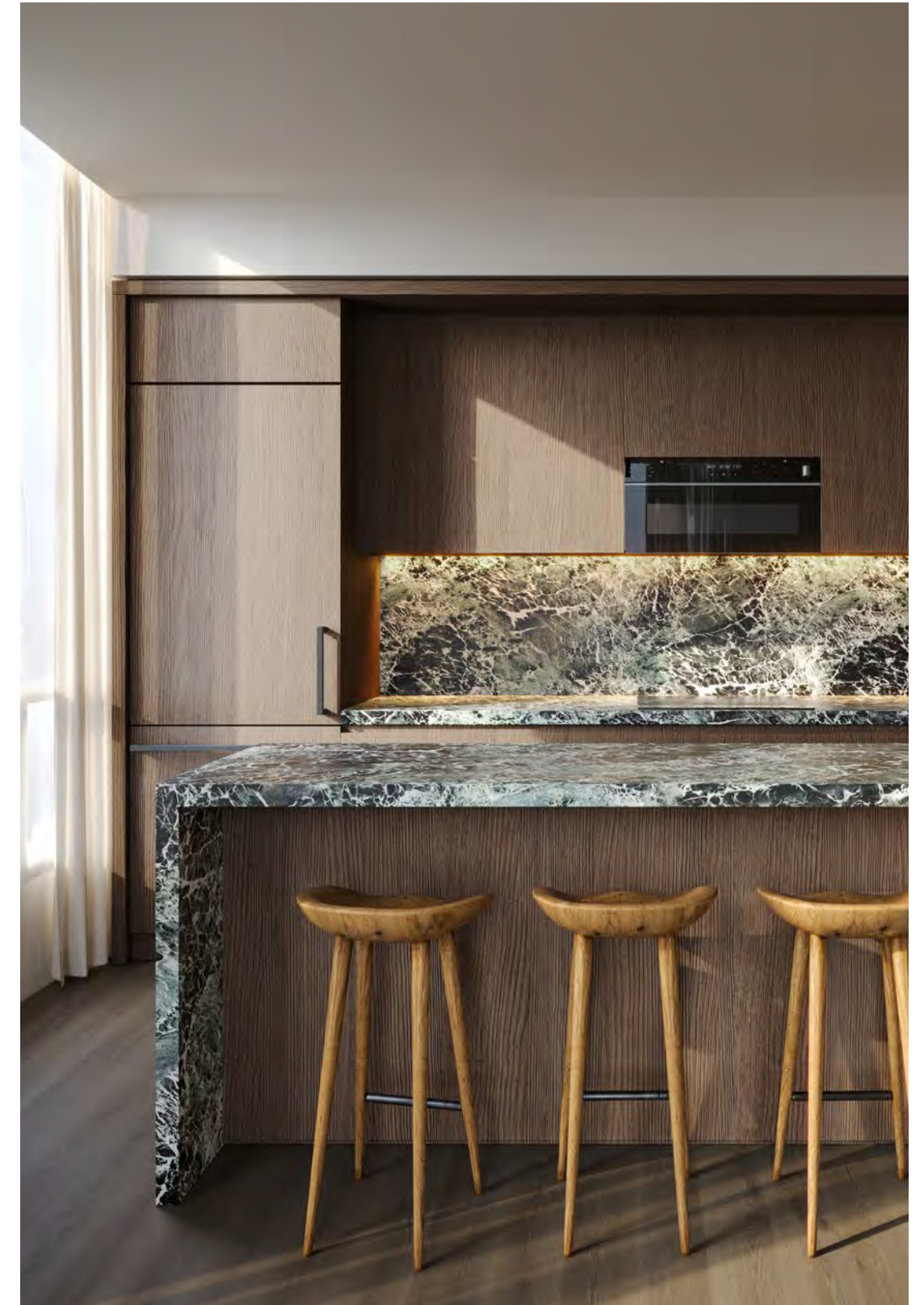
LOUNGE



THEATRE

Suite Features and Finishes

Taking cues from the architect's broad gestures, as well as great hotels from around the world, the Studio Paolo Ferrari-designed residential suites employ vast curves and such monumental materials as swathes of marble, walnut, oak, and quartz. The overall look is both timeless and unconventional.





LIVING ROOM







FORMATORONTO.COM



Renderings are artist's concept. Specifications are subject to change without notice. E. & O. E.