



ELEVATION. 1



ELEVATION. 2



ELEVATION. 3

CARNEGIE 30A

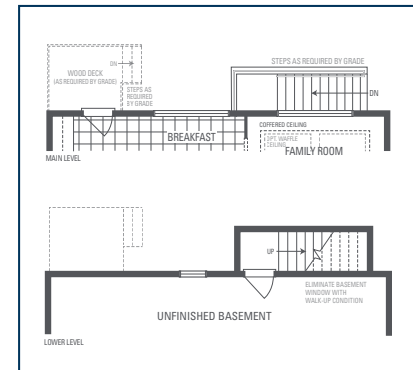
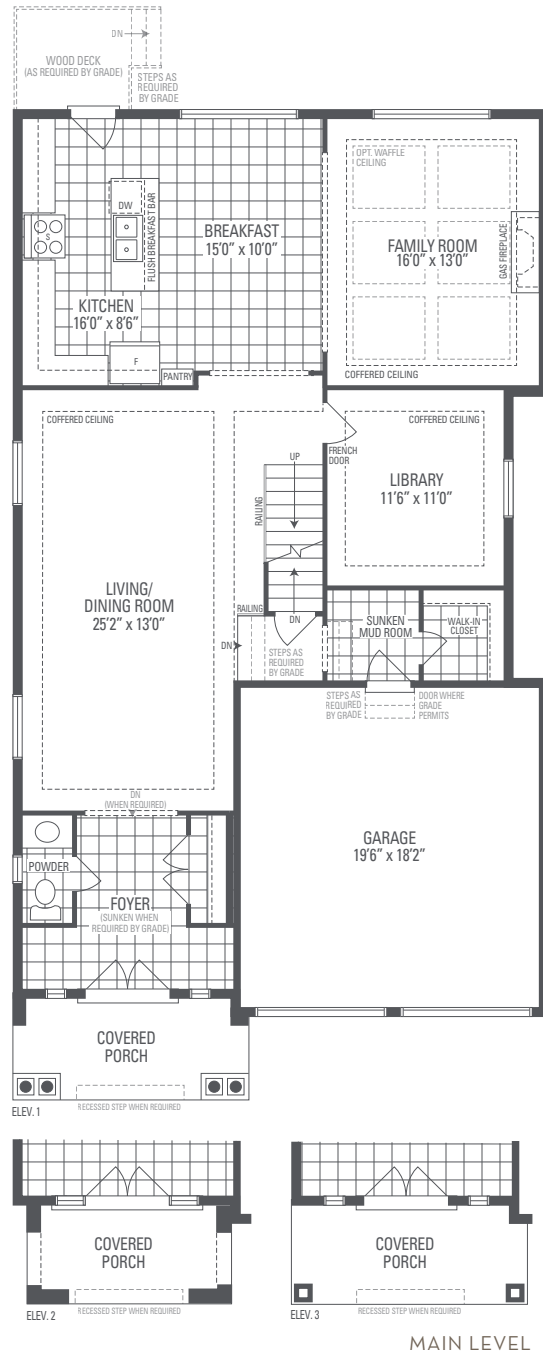
Elevation 1 • 3,166 sq.ft. | Elevation 2 • 3,134 sq.ft. | Elevation 3 • 3,152 sq.ft.

Main exterior building materials for front include:
 Elev. 1 • Cultured Stone + Brick, Elev. 2 • Cultured Stone + Brick, Elev. 3 • Cultured Stone + Brick + Painted Wood Product.
 Barquentine Estates Ph. 2 • 40' • May 2021

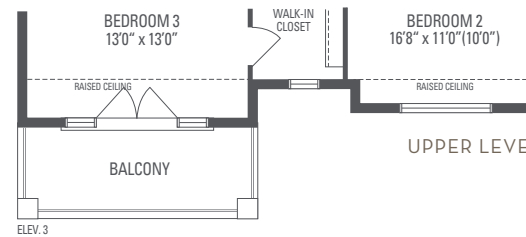
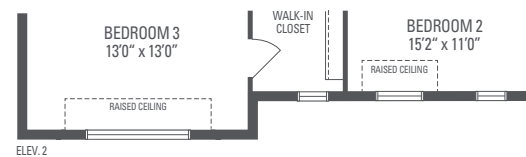
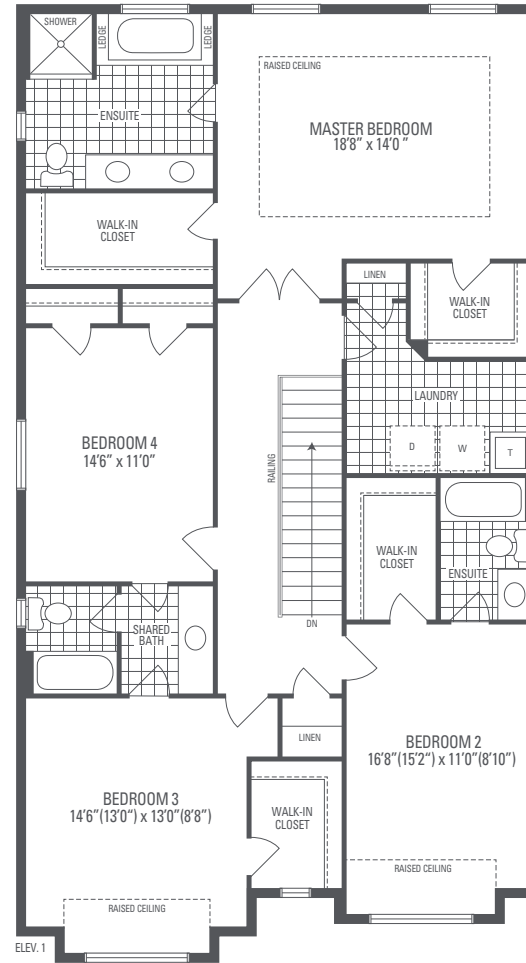
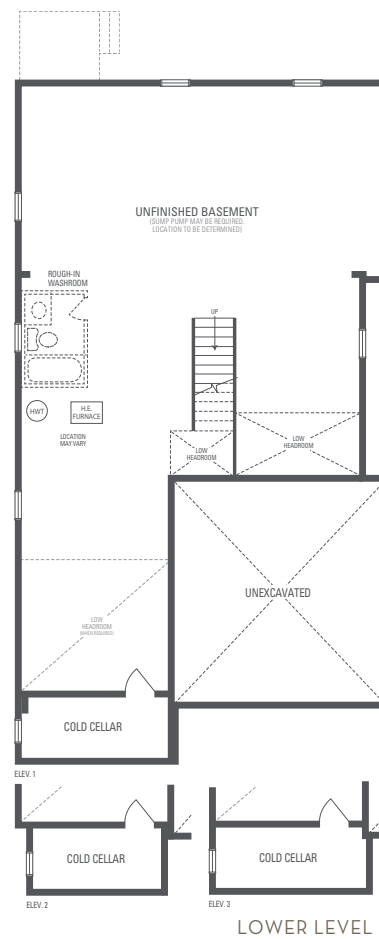
NOTE: Orientation of home may be reversed and purchaser agrees to accept the same. Unit setback and roofline may vary due to siting. Steps may vary at any exterior entrance ways due to grading variance. All dimensions are approximate only and subject to change without notice. Actual usable floor space may vary from stated floor area. All renderings are artist's concept, specifications, architectural and mechanical detailing are subject to minor modifications. Mechanical wall encroachments may be required into finished rooms and garage spaces. E.&O.E.

CARNEGIE 30A

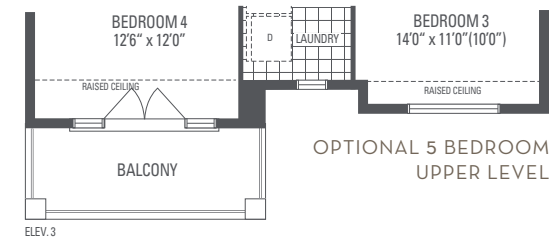
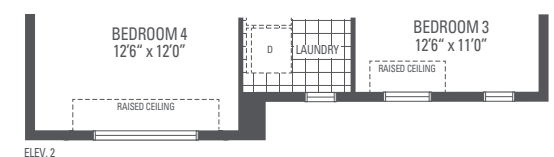
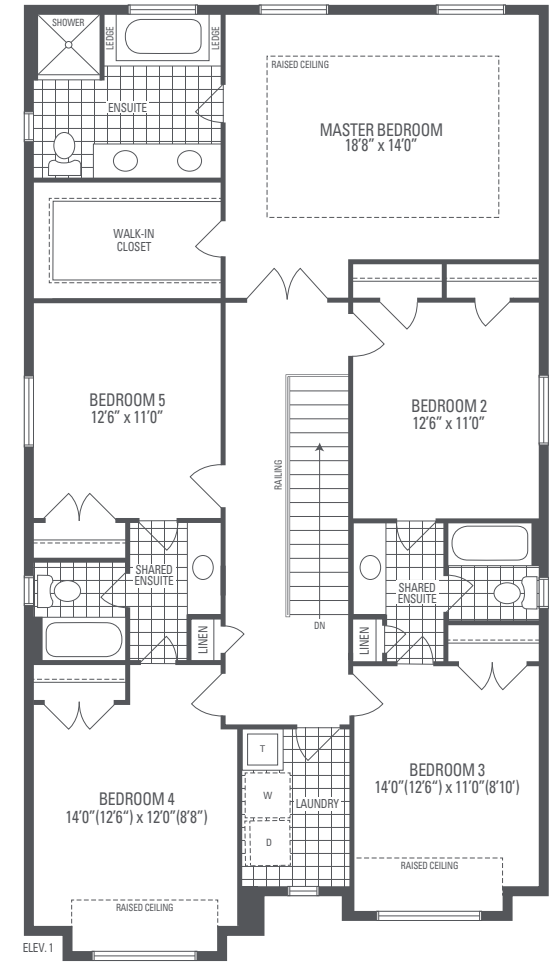
Elevation 1 • 3,166 sq.ft. | Elevation 2 • 3,134 sq.ft. | Elevation 3 • 3,152 sq.ft.



OPTIONAL UNCOVERED WALK-UP BASEMENT STAIR



UPPER LEVEL



OPTIONAL 5 BEDROOM UPPER LEVEL