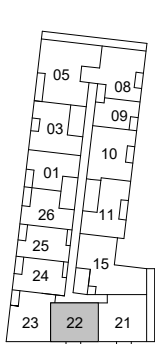
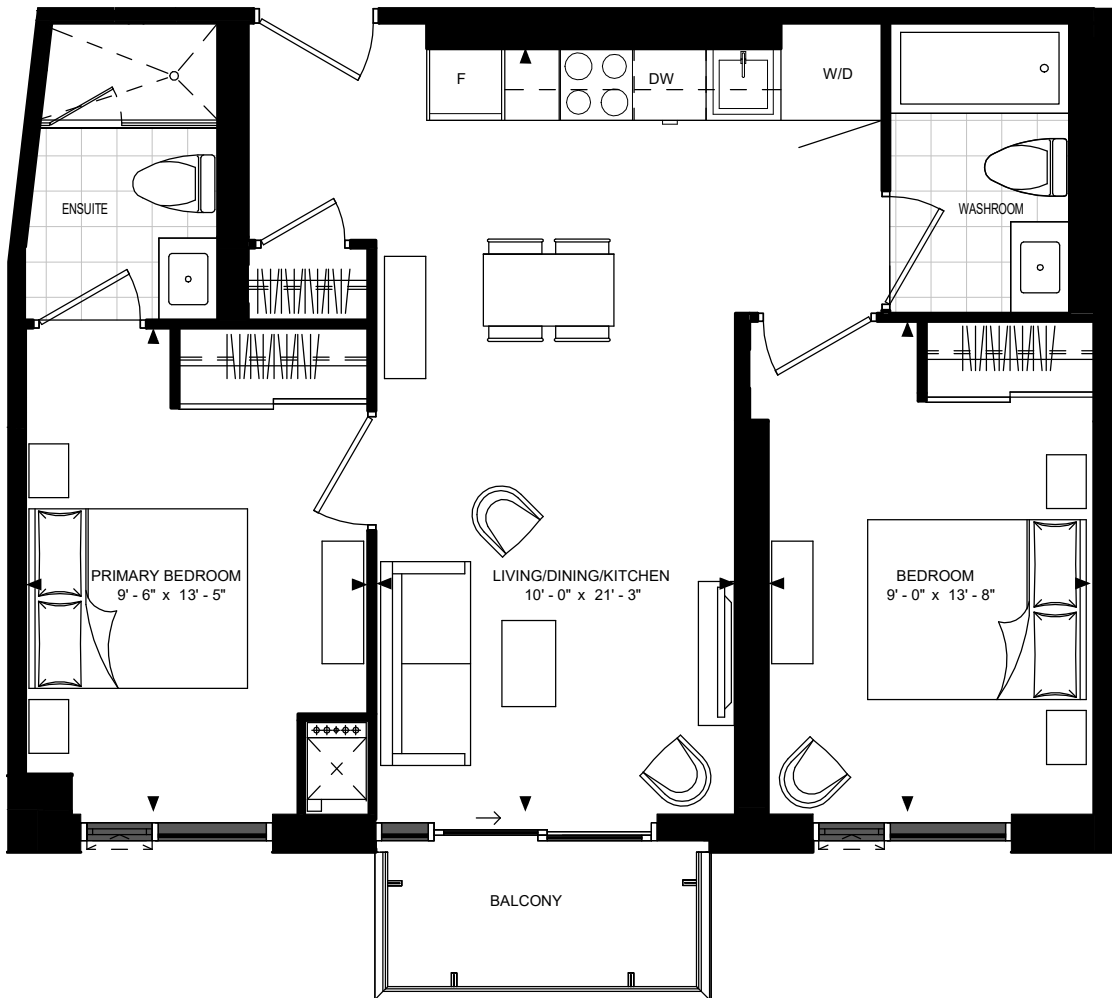
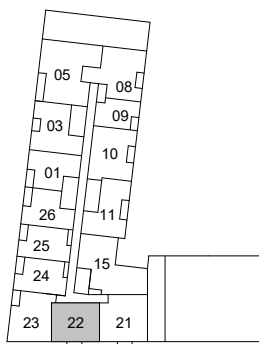


SUITE 2-K1

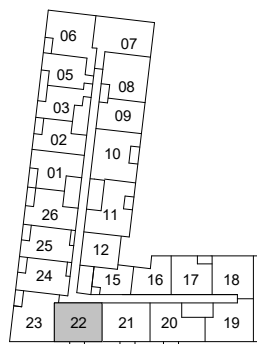
5858 Yonge Street



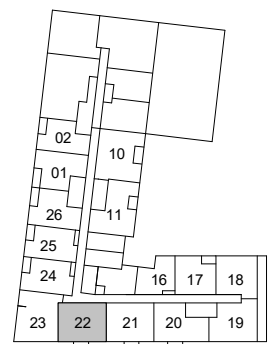
FLOOR 9



FLOOR 8

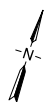


FLOORS 3, 5-7



FLOOR 2

SUITE 2-K1  
SUITE AREA: 705 SF



Disclaimer : Materials, specifications & floor plans are subject to change without notice. All renderings are artist's conceptions. All floor plans have approximate dimensions. Actual usable floor space may vary from the stated floor area. E.&O.E.

12 JANUARY 2022

NOT TO SCALE