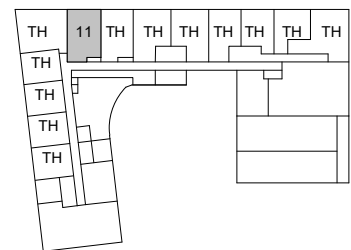
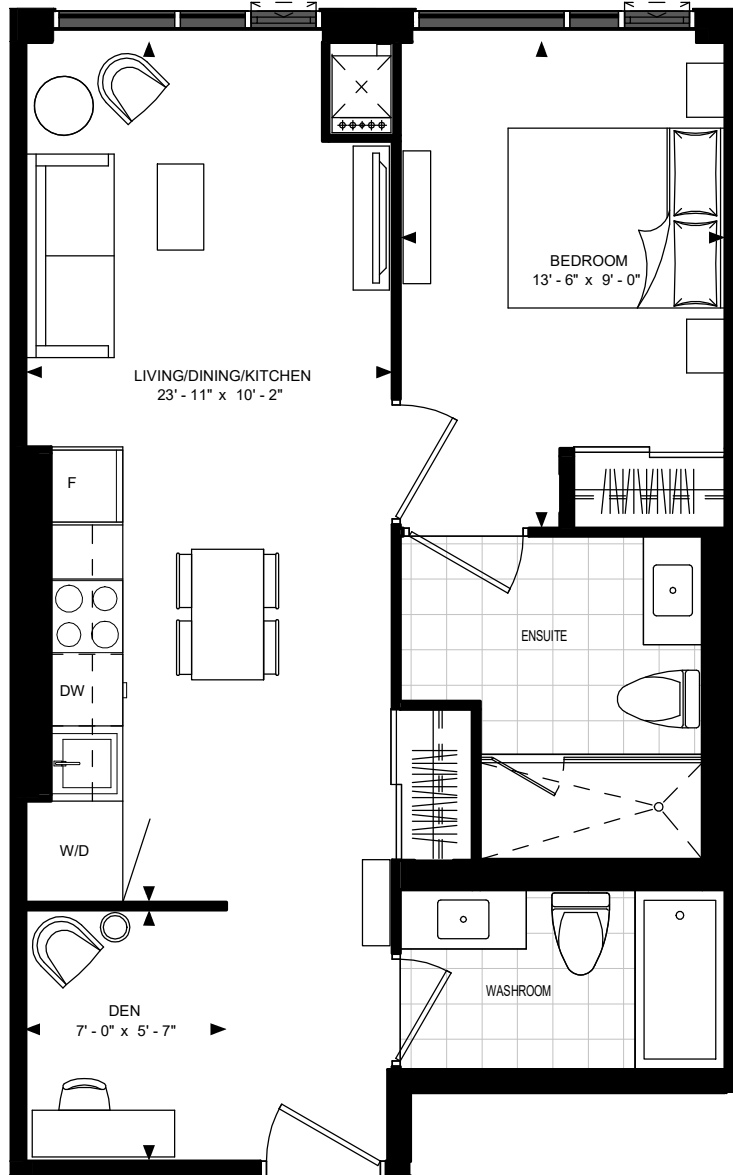
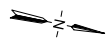


SUITE 1D2-E

5858 Yonge Street



FLOOR 1



SUITE 1D2-E  
SUITE AREA: 637 SF

Disclaimer : Materials, specifications & floor plans are subject to change without notice. All renderings are artist's conceptions. All floor plans have approximate dimensions. Actual usable floor space may vary from the stated floor area. E.&O.E.

12 JANUARY 2022

NOT TO SCALE