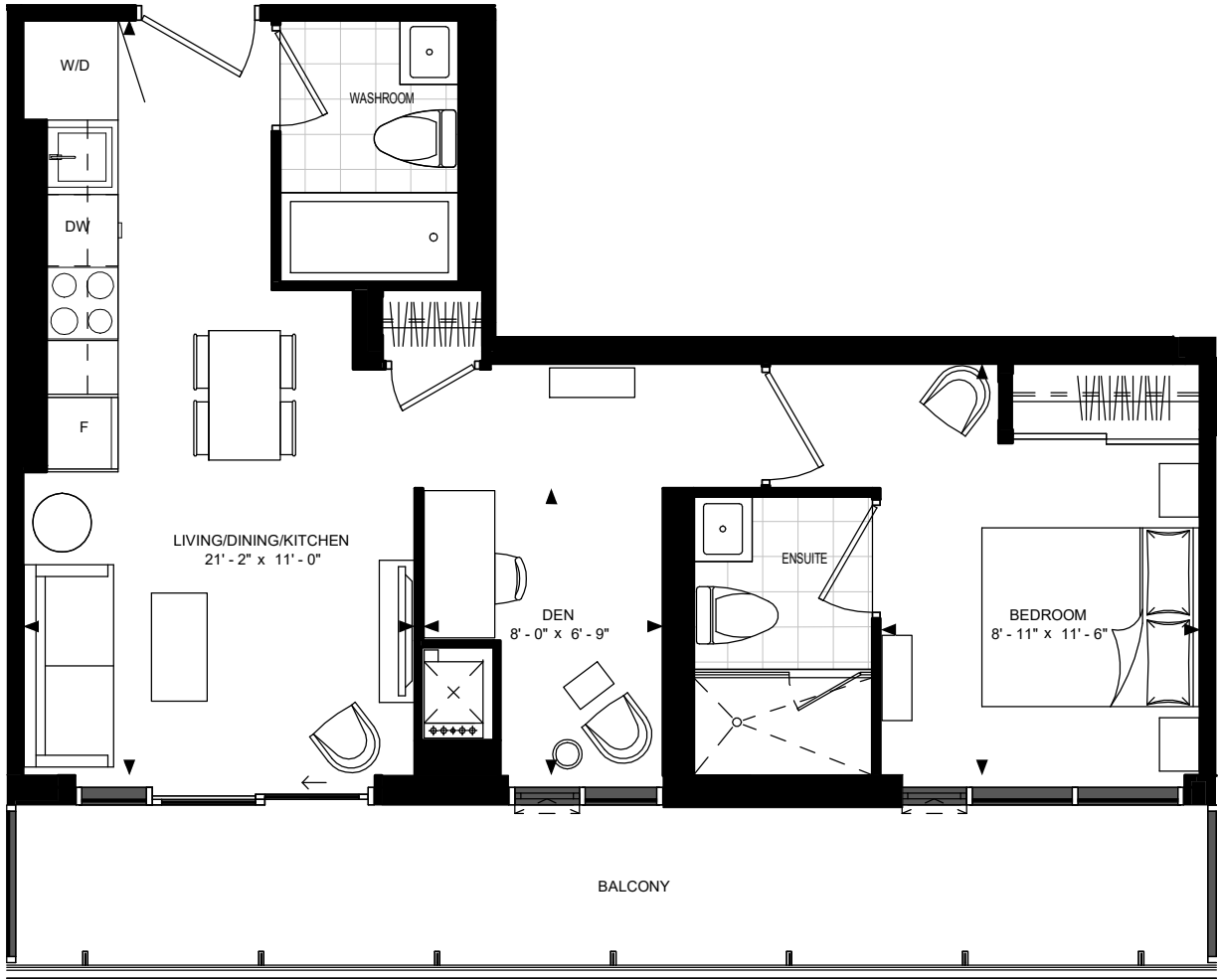


SUITE 1D2-B

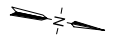
5858 Yonge Street



23	25	26	01	02	05
15	12	11	10	08	

FLOOR 11-PH

SUITE 1D2-B
SUITE AREA: 583 SF



Disclaimer : Materials, specifications & floor plans are subject to change without notice. All renderings are artist's conceptions. All floor plans have approximate dimensions. Actual usable floor space may vary from the stated floor area. E.&O.E.

12 JANUARY 2022

NOT TO SCALE