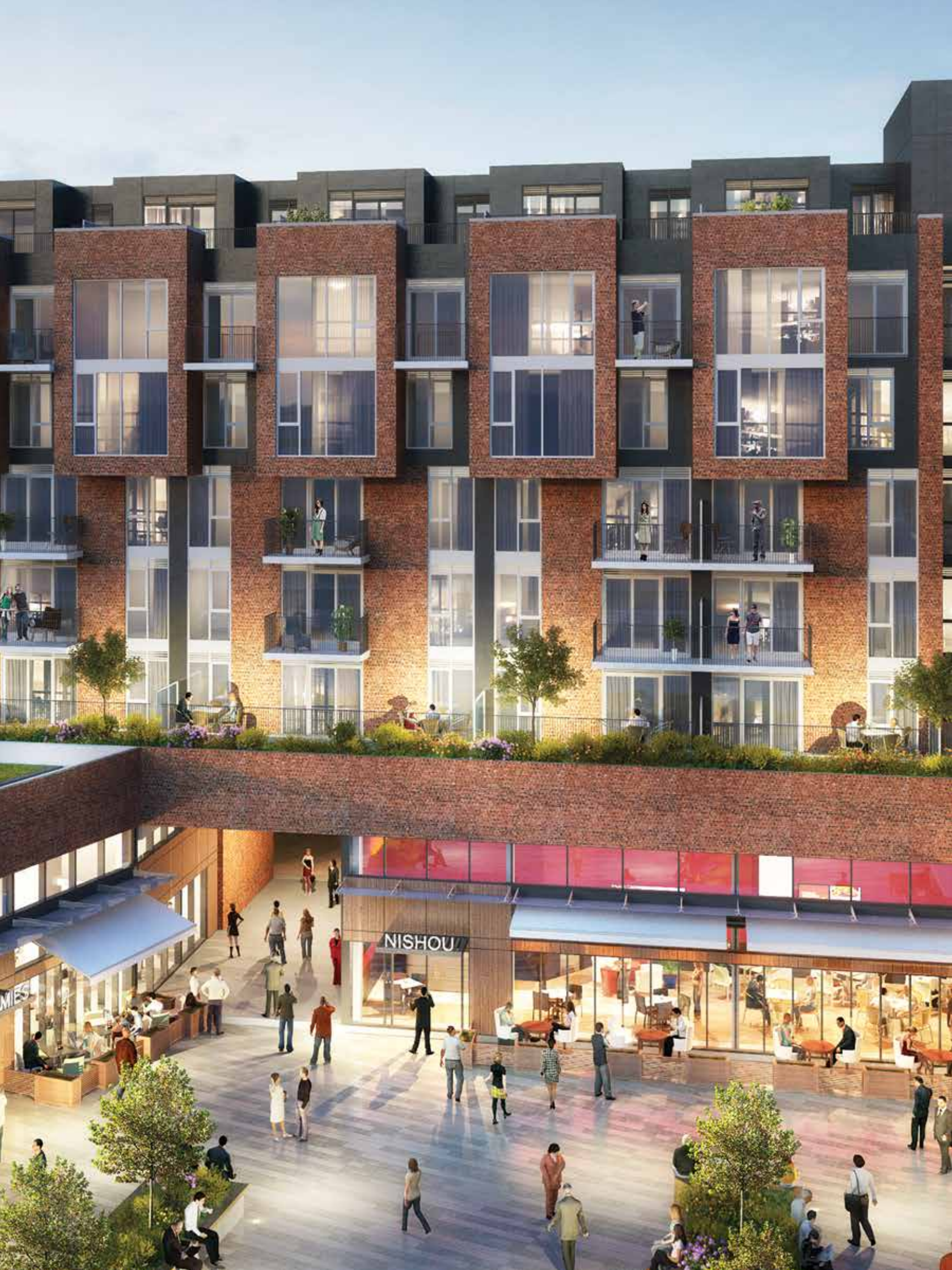


GALLERY HOUSE



NISHOU

MIES



# HOME IS WHERE THE ART IS

FIND BEAUTY IN THE UNDERSTATED AND LUXURY IN THE UNEXPECTED



CLASSIC KITCHEN & DINING

This inspired interior features brilliant use of colour and texture, while playing with light and shadow, shapes and movement. Contemporary themes are present throughout these luxurious homes in downtown Markham.

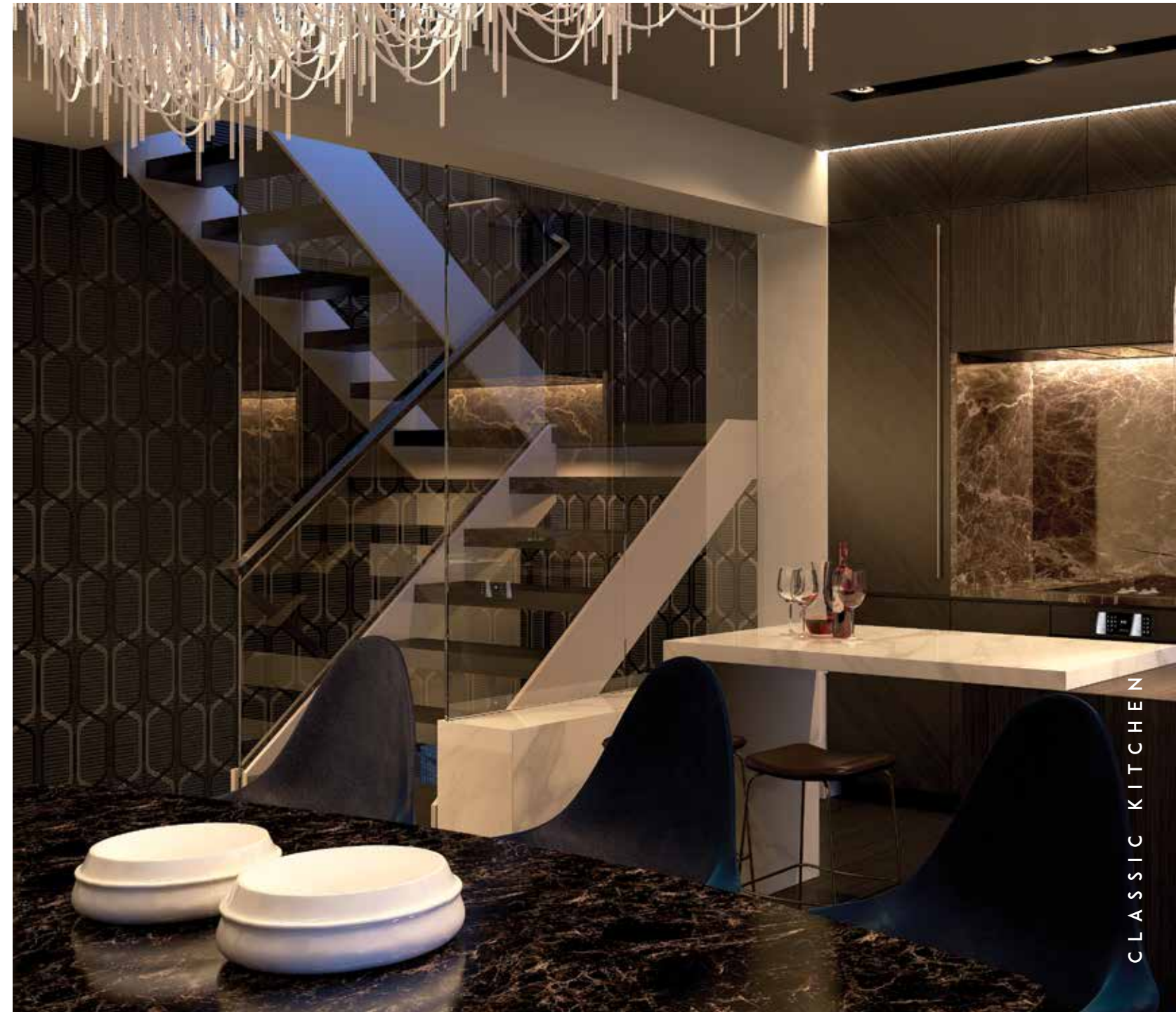








Natural light spills in through windows on each storey, presenting residents with marvelous vistas that add depth to each space. Bringing tranquility to the forefront, every element is carefully placed to complete the balance of your home.



Like all art forms, interior design is subjective. That's why residents of Gallery House will have their choice of three design packages: Classic, Social, and Zen. Each package offers a unique ambiance, suitable for a variety of lifestyles and personal tastes.





ZEN MASTER BEDROOM



SOCIAL ENSUITE

Master bedrooms and spa-inspired bathrooms are designed to help you recharge and revitalize each day. Choose among interiors featuring creative tiling, modern natural accents, and high-end materials that elevate your everyday.



## S O C I A L   S O I R É E S

ENTERTAIN FRIENDS AND FAMILY ON YOUR SPACIOUS PRIVATE TERRACE



Gallery House offers residents a breath of fresh air on the loft-like third floor of your townhome penthouse suite. Step out onto your breathtaking private terrace and step up your entertaining with alfresco mingling next to the fire pit.







# A TIMELESS MASTERWORK

DOESN'T JUST CAPTURE THE ESSENCE OF FINE LIVING. IT CREATES IT.



Upon your arrival home, you are greeted by a 24-hour concierge and a creatively designed lobby that is as welcoming as it is wonderful. A cool colour palette complements marble and metal elements in this space where neighbours socialize.





Inside and out, Gallery House's communal spaces are designed to bring friends, neighbours, and loved ones together. Fascinating pieces such as the geometrical outdoor light sculpture and graphic party room table are sure to spark conversation.









Vibrant works of art decorate amenity spaces dedicated to your amusement and entertainment. The games room features billiards and Ping-Pong, connecting to the barbecue area where swinging seats add a playful touch to the elegant outdoor space.



# THE ARTISTS

FULFILL EVERY WISH; YET LEAVE ROOM FOR YOUR IMAGINATION



The Remington Group Inc. (TRG) is a privately held company with substantial land holdings and over 60 years' experience within the industry. TRG operates, develops, manages and builds an extensive cross-section of residential and income properties all across Ontario. Led for more than 60 years by brothers Rudolph and Jerry Bratty, TRG has built thousands of homes, and owns and manages millions of square feet of commercial, retail, and industrial properties.

Today, a third generation of Bratty brothers - Matthew, Mark, Christopher and Michael - carry on the tradition of running a progressive, integrated company that continues to be an industry leader. TRG has earned a reputation for honesty, hard work, and generous community investment and involvement. Among residential owners, retail and commercial tenants, community associations, business partners, and through all levels of government, The Remington Group is known as an ethical and dedicated development company.



# G A L <sup>H O U S E</sup> T E R Y



**DOWNTOWN  
MARKHAM**

D O W N T O W N M A R K H A M . C A

Illustrations are artists' concept and are subject to change without notice. E.&O.E.