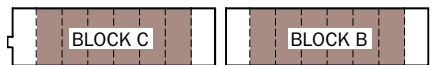
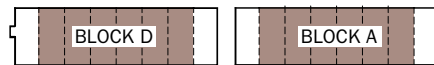


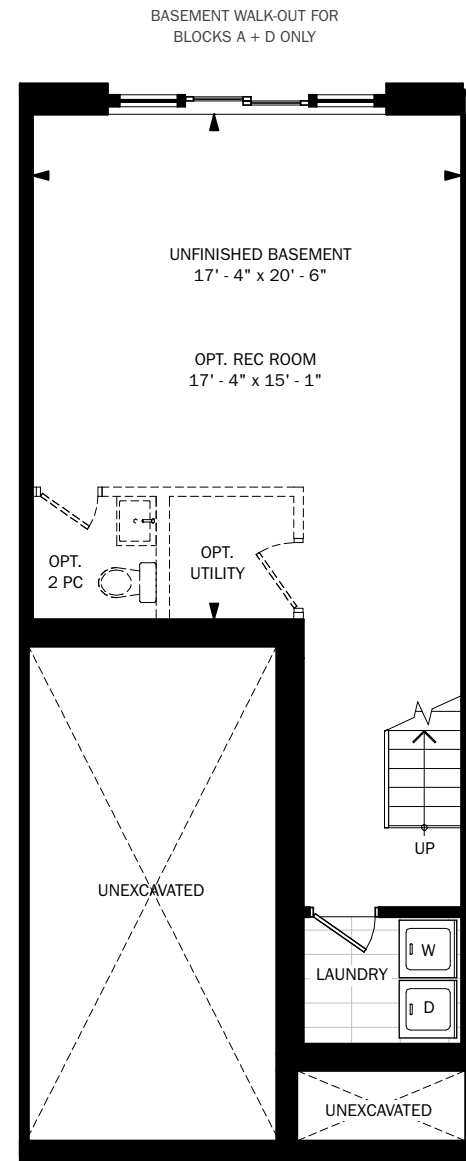


BROOKLYN

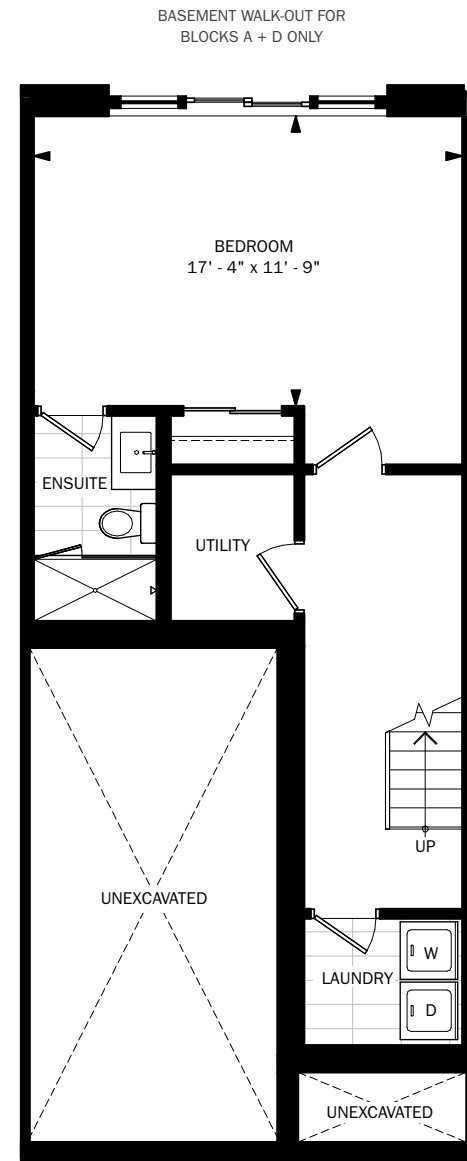
3 BEDROOM, 2 FULL BATHS + 2 POWDER
2,215 SQ.FT.



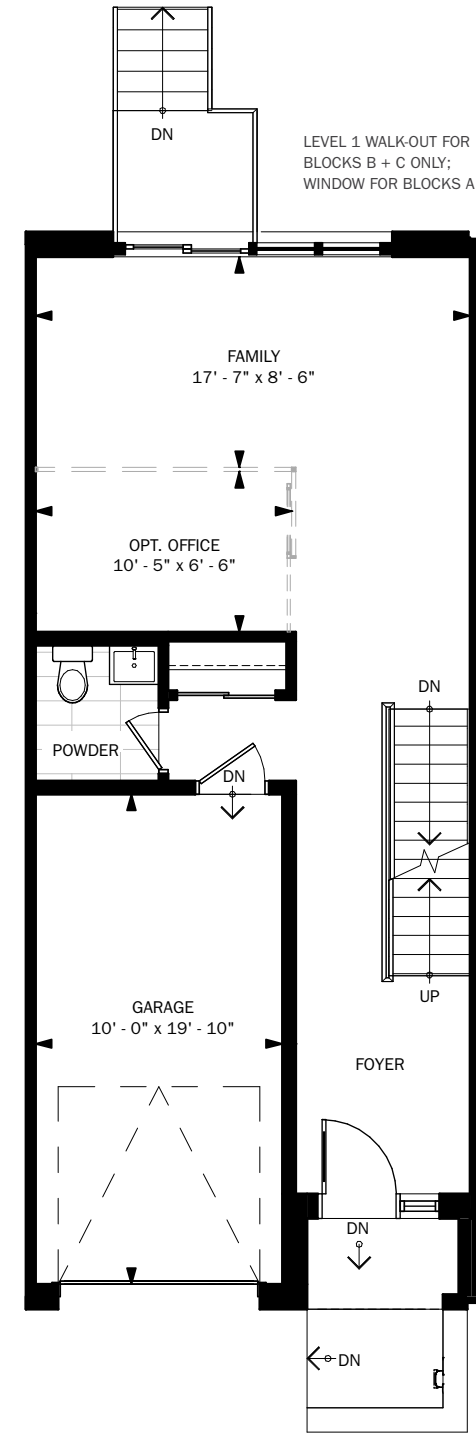
Dimensions, specifications, layouts and materials are approximate only and are subject to change without notice. Tile patterns may vary. Window size and location may vary. Actual usable floor space may vary from stated floor area. Bulkheads required for mechanical purposes such as kitchen and washroom exhausts and heating and cooling ducts have not been indicated. Illustrations are artist's concept. E.&O.E.



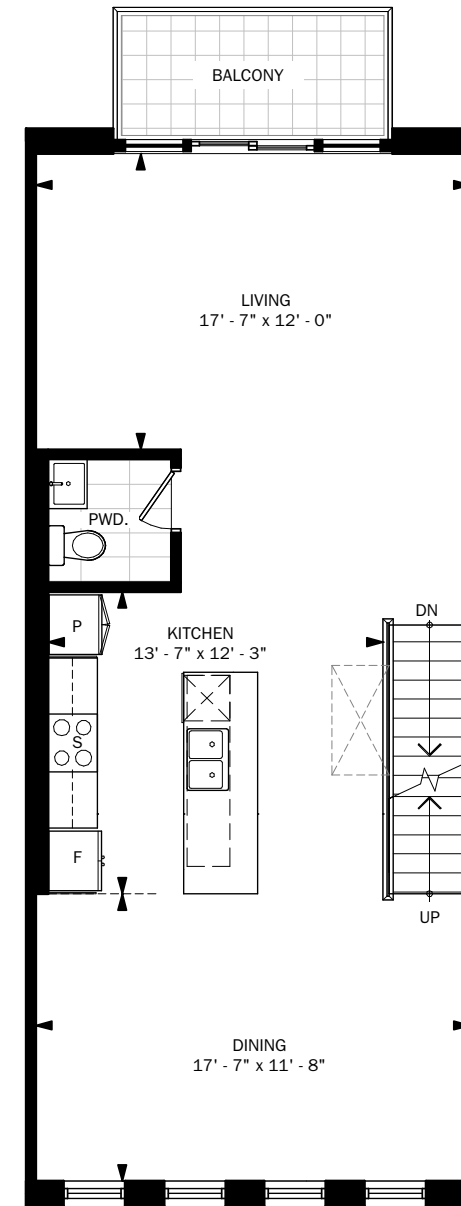
BASEMENT



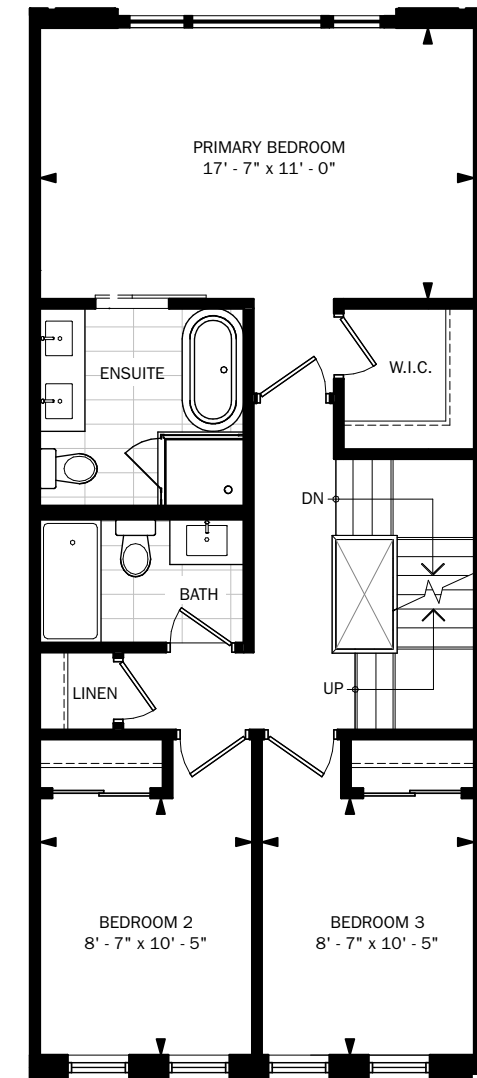
OPT. 4 BEDROOM
BASEMENT



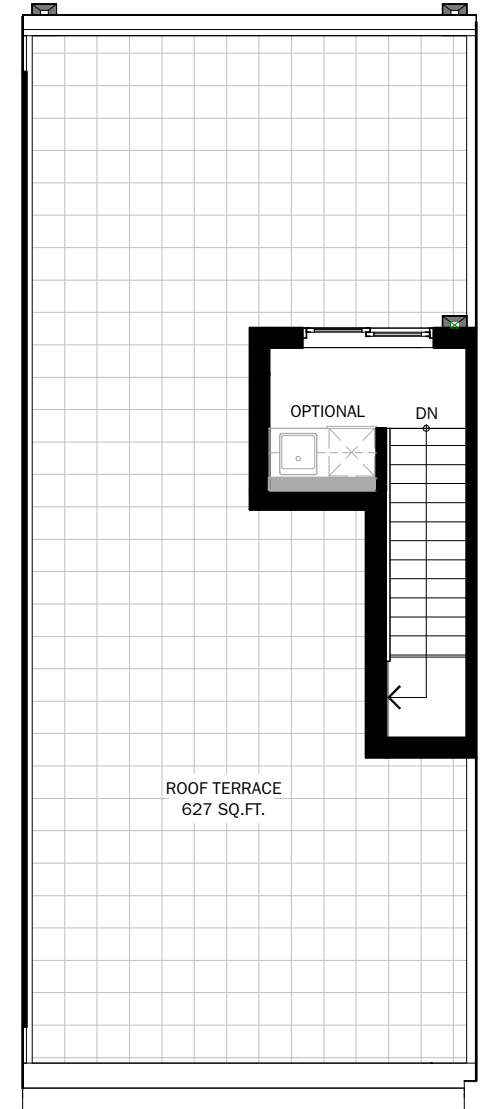
GROUND



SECOND



THIRD



ROOFTOP TERRACE