



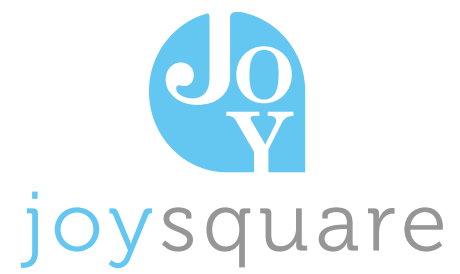
an exclusive enclave  
of freehold townhomes  
in Stouffville



joysquare

“Beauty is whatever gives joy.”

Edna St. Vincent Millay

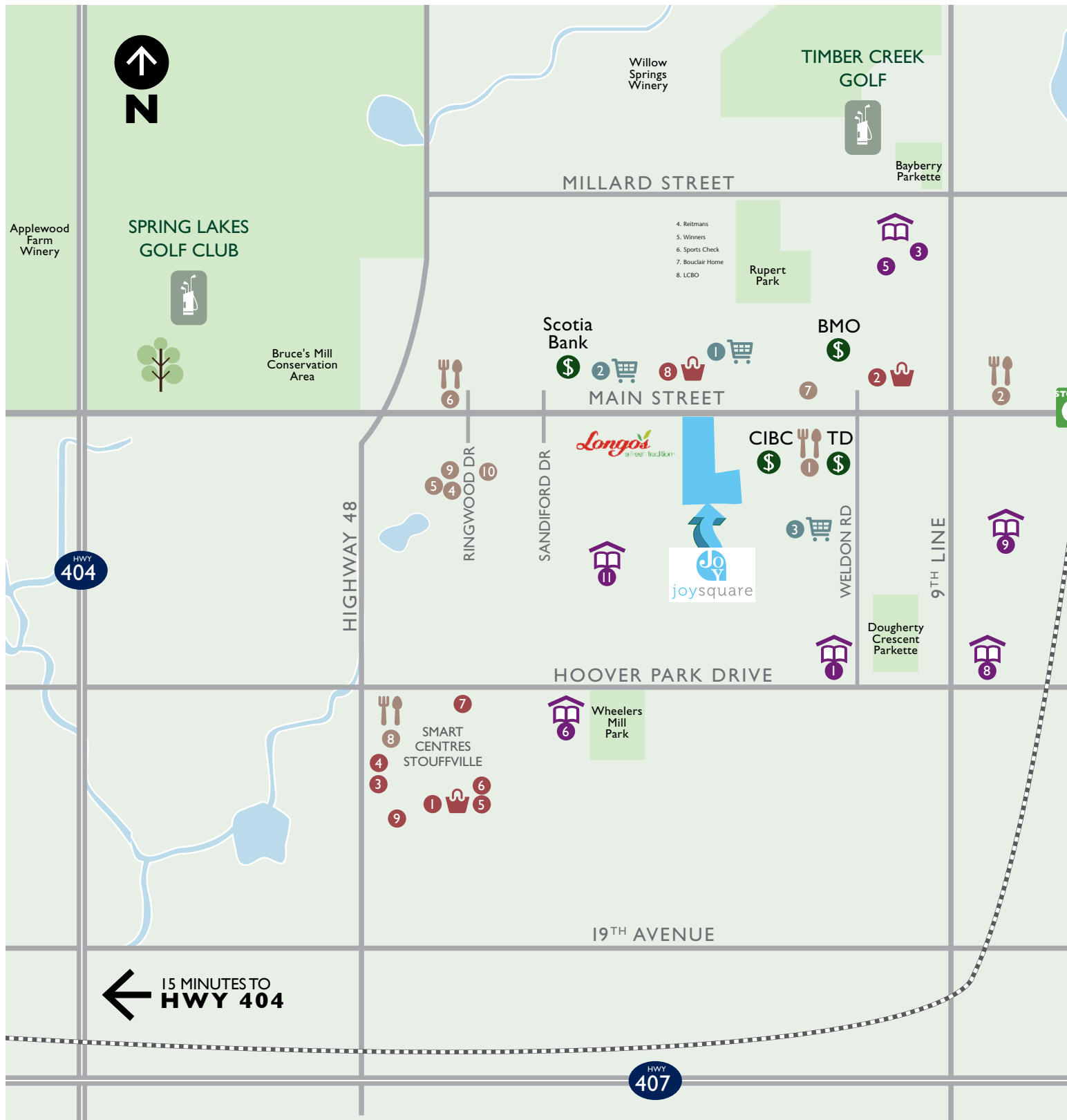


## You'll jump for Joy!



### **The pursuit of happiness.**

True joy comes from within. From the satisfaction you find in your life. From the love you find in your family and friends. From the success you find in your career. But there is a special kind of happiness that comes from without, and which you can enjoy only when you find at last that perfect home you've always dreamed of. If you've been searching for that home that encompasses all the things you love most in life, you'll find it here at Towns at Joy Square.



## Schools

1. Stouffville District Secondary School
2. St. Brigid Catholic Elementary School
3. Glad Park Public School
4. Wendat Village Public School
5. St. Mark Catholic Elementary School
6. Oscar Peterson Public School
7. Summitview Public School
8. St. Brendan
9. Stouffville French School  
(École catholique Pape-François)
10. Barbara Reid Public School
11. Royal Cachet Montessori School
12. The Progressive Montessori Academy

## Shopping

1. Walmart Superstore
2. Giant Tiger
3. Dollarama
4. Reitmans
5. Winners
6. Sports Check
7. Bouclair Home
8. LCBO
9. Canadian Tire

## Groceries

1. M&M Food Market Supermarket
2. Metro Supermarket
3. No Frills Supermarket

## Restaurants

1. Symposium Cafe Restaurant & Lounge
2. Fishbone Bistro
3. China Garden Restaurant
4. Jades Finest Chinese Food
5. Stouffville Thai
6. Stakeout Dining Room & Lounge
7. Greek Stop
8. Sgt. Pepper's Pub & Grill
9. India 360
10. Maki Sushi

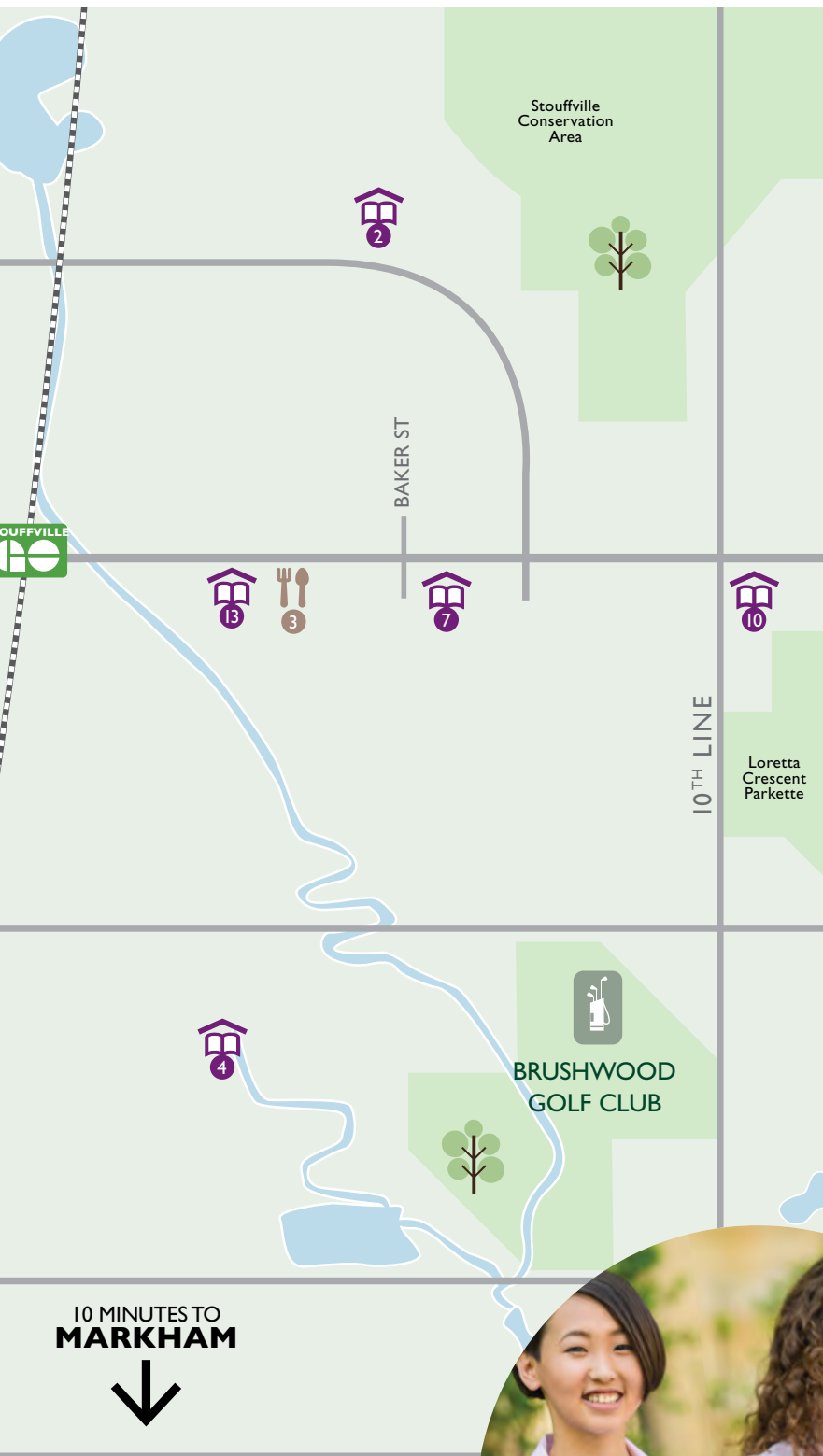


# Discover our Joy!

Life doesn't get any easier when you are right on the "main street", minutes from downtown Stouffville and just steps from the GO station, for a quick and easy commute to Toronto. Within easy walking distance is Memorial Park and its adjoining network of trails while the Whitchurch-Stouffville Leisure Centre provide a wealth of recreational possibilities. And easy access to Highways 48, 404 and 407 make it simple to head to the golf course or north to the cottage.

Directly beside Towns at Joy Square is a modern new shopping plaza where you can do your grocery shopping at Longo's as well as take advantage of a variety of other appealing restaurants, stores and services all within a short walk.

Walk Score 71  
Transit Score 32



10 MINUTES TO  
**MARKHAM**



Artist's concept. Map is not drawn to scale. Streets, sidewalks and landmarks are approximation only. E. & O.E.

## Parks & Golf

- Bruce's Mill Conservation Area
- Rougeview Dog Park
- Stouffville Memorial Park
- Rouge National Urban Park
- Wilderness area with diverse landscapes
- Rupert Park
- Phyllis Rawlinson Park
- Swan Lake Park
- Mintleaf Park
- Lake Wilcox Park
- Simeon Park
- Cedar Beach Park
- Silver Stream Park
- Headwaters Community Park
- Eyer Homestead Park





# The Joy Square Community

Set behind the new CIBC bank at 5827 Main Street, the townhomes at Joy Square are removed from the bustling main avenue while offering quick and easy access to it and all of its amenities. With the townhomes aligned in a pleasing formation of streetscapes, the community is surrounding by an established neighbourhood with tree-lined streets and an array of existing restaurants, stores and services already in place for your use and enjoyment.







PARK



**Model Type**

- BLISS
- CHEER
- GLEE
- DELIGHT
- WONDER

Artist's concept. Map is not drawn to scale. Streets, sidewalks and landmarks are approximation only. E. & O.E.







# The Joy of green space



While Stouffville boasts an abundance of parks and green spaces, the closest one is right outside your door at Towns at Joy Square. A neighbourhood park offers a green oasis in which you are welcome to relax and enjoy the sun on your face, while the community's lush landscaping also extends between the blocks of townhouses, adding a touch of greenery everywhere you look.

Of special delight to the kids in the neighbourhood is Joy Park's own fun and colourful playground – a favourite destination that will echo with the sounds of their happy laughter.





# The Joy of learning

Towns at Joy Square gets top marks for mixing location and education, with many of the area's schools ranking among Ontario's best.



Nothing is more important than your children's getting a good education. So you'll be happy to learn that Towns at Joy Square is surrounded by some of the very finest schools in the province. It begins with a superb choice of pre-schools and daycare facilities. Then there are excellent elementary and high schools, both public and private, as well as Catholic, French and Montessori schools. And when it's time to "graduate" to post-secondary education, the York University campus is nearby as is Stouffville College.



# An enriching educational environment

## Schools

- St. Brigid Catholic Elementary School
- Glad Park Public School
- Wendat Village Public School
- St. Mark Catholic Elementary School
- Oscar Peterson Public School
- Summitview Public School
- St. Brendan
- Stouffville French School
- Barbara Reid Public School
- Royal Cachet Montessori School
- École catholique Pape-François
- Stouffville District Secondary School

## Private Schools

- Maple Leaf International School
- The Progressive Montessori Academy
- Willowgrove Primary School

## Colleges & Universities

- York University
- Stouffville College
- Seneca College









---

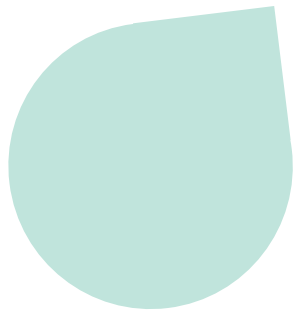
Joy of it all!

---





street view







# Live in pure Joy!

Located on 5827 Main Street in Stouffville, Towns at Joy Square offers all the advantage of "small town" living with all the "big city" amenities just moments away. This intimate infill project encompasses just 75 townhomes, each exceptional in its design and exclusive by its very nature. Choose from spacious 3 and 4 bedroom models with a traditional heritage look but modern, open concept interiors within, tailored to today's families who demand nothing but the best.







# Neighbourly Promenades



Artist's concept



front view



# Relax in total Joy!

Striking in their architectural design, the exteriors at – both front and rear – are an elegant blend of stone and brick. Equally distinguished are the homes' interiors all appointed with the finest in features and finishes, chosen with a designer's eye, and executed with the steady hands of craftsmen skilled in the art of homebuilding. Here no detail has been overlooked because only the best will do.









Comfort and Joy









---

# Choose to

---



---

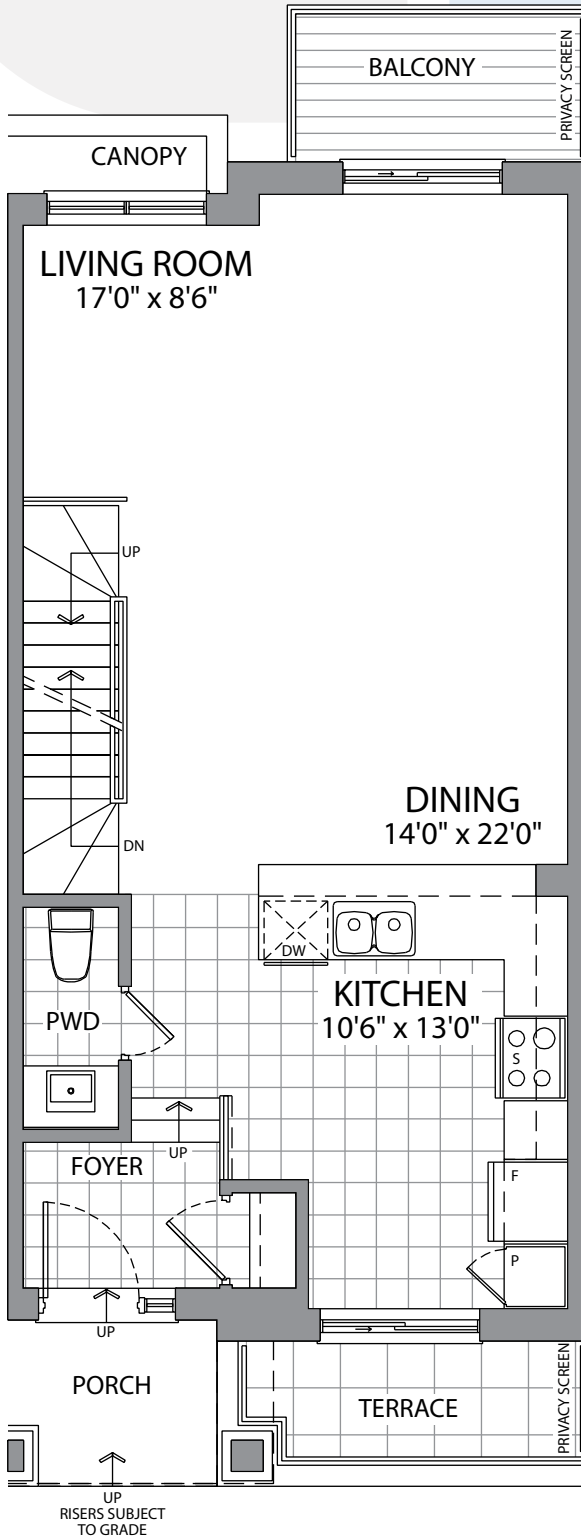
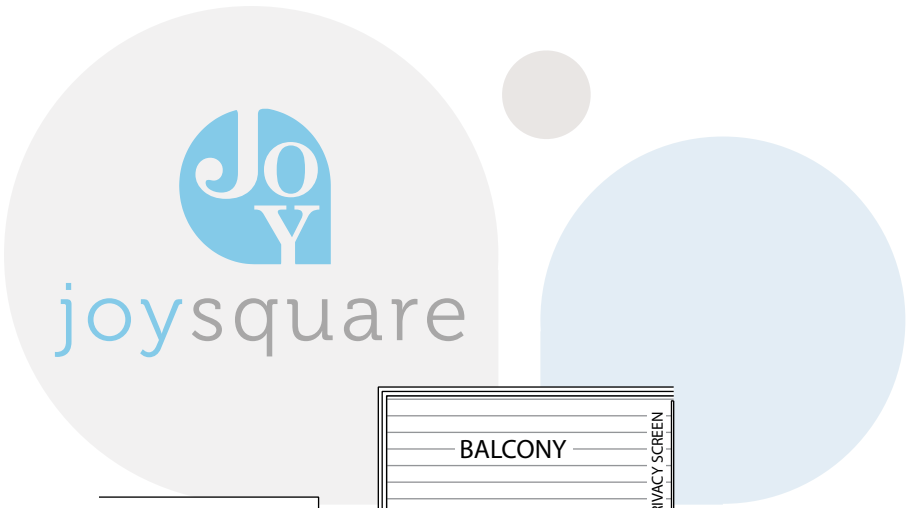
# live in Joy

---

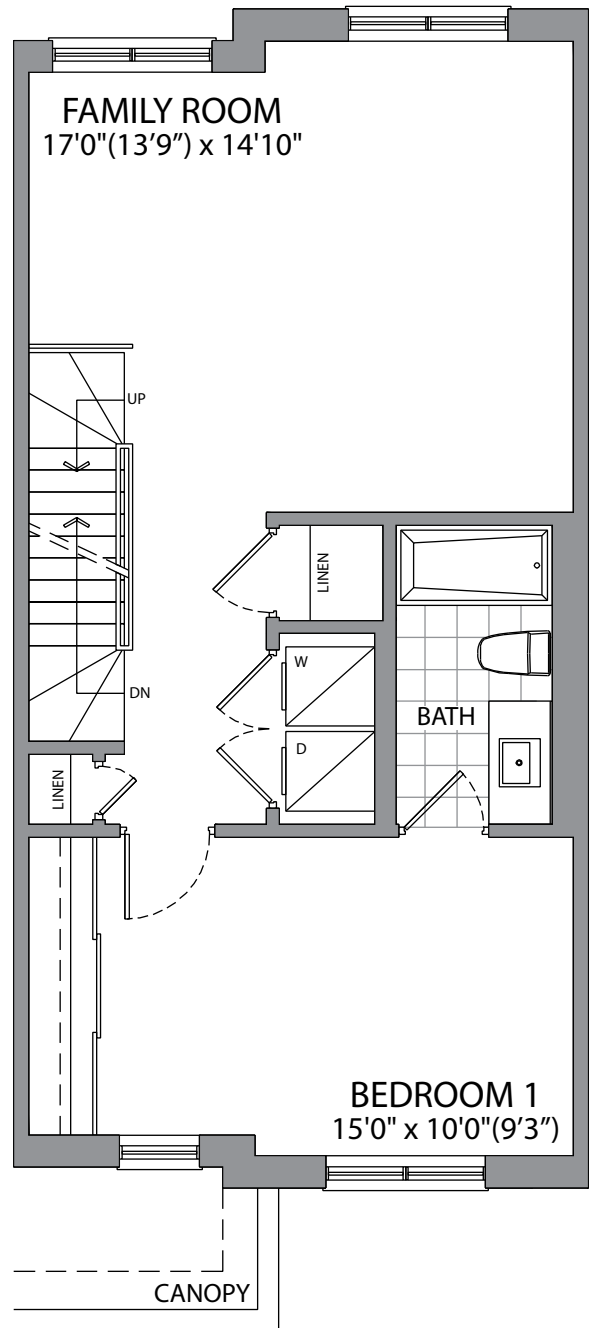
An exclusive enclave of  
freehold townhomes.

You'll be happy indeed at the sheer variety of choice offered to you at Towns at Joy Square, with five fabulous floorplans from which to select, each with its own distinct design flair and all sharing the same luxury features. But while these 75 townhomes are built to last a lifetime, the opportunity to purchase here won't last long at all so don't delay – make your choice today!





**Ground Floor**  
655 sq. ft.



**Second Floor**  
A: 655 sq. ft.

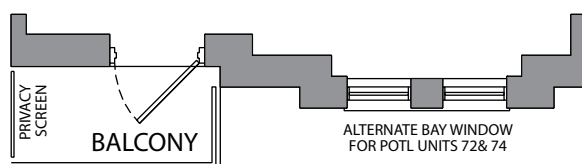
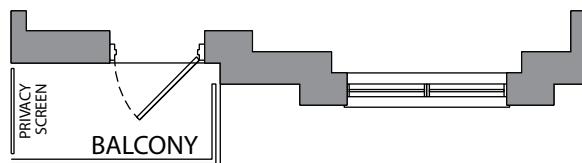
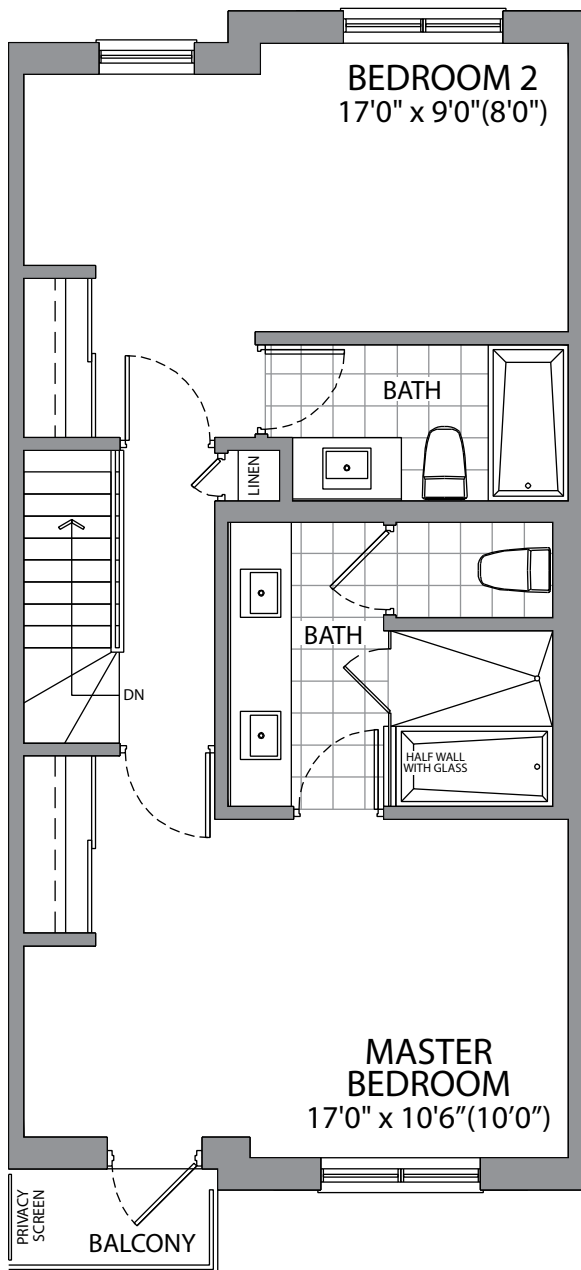


**Second Floor**  
A1: 660 sq. ft.

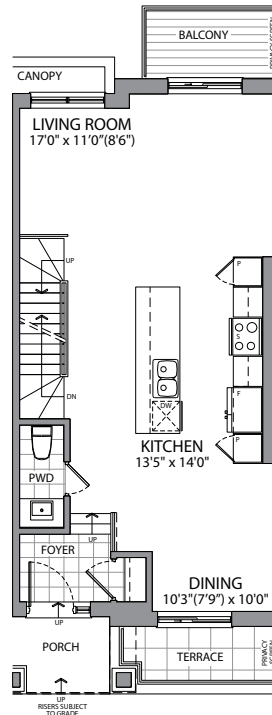
\*All drawings are artist's concept and may vary slightly from the final product. Actual usable floor space may vary from stated area and square footage has been calculated based on usable living space according to Taron rules. Drawings may show optional features which may not be included in the base price. The number of interior and exterior steps may vary from what's shown based on individual lot/plot grading conditions. E. & O. E.

# Bliss

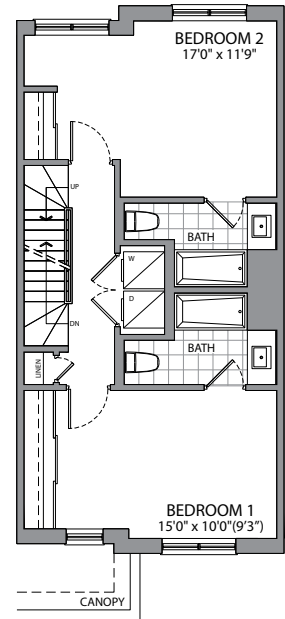
A: 2,190 sq. ft.  
A1: 2,200 sq. ft.



**Third Floor**  
A1: 660 sq. ft.



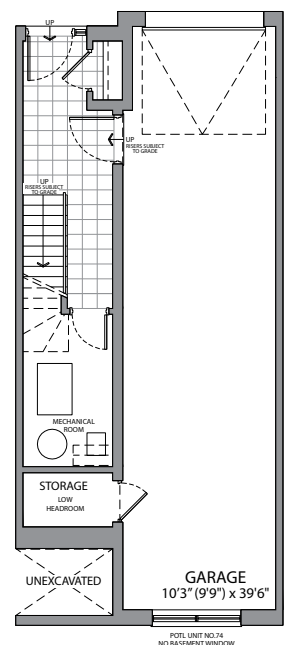
**Alt. Ground Floor**  
A: 655 sq. ft.



**Alt. Second Floor**  
A: 655 sq. ft.

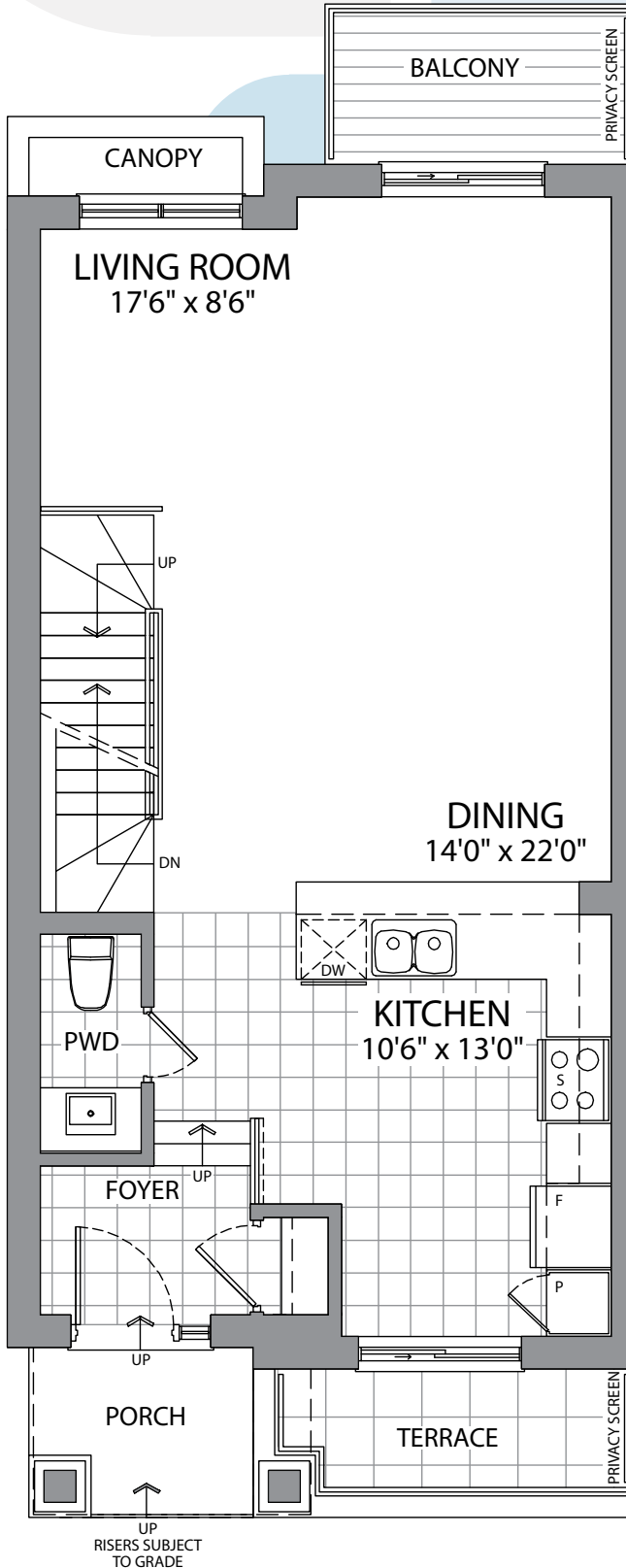


**Alt. Second Floor**  
A1: 660 sq. ft.

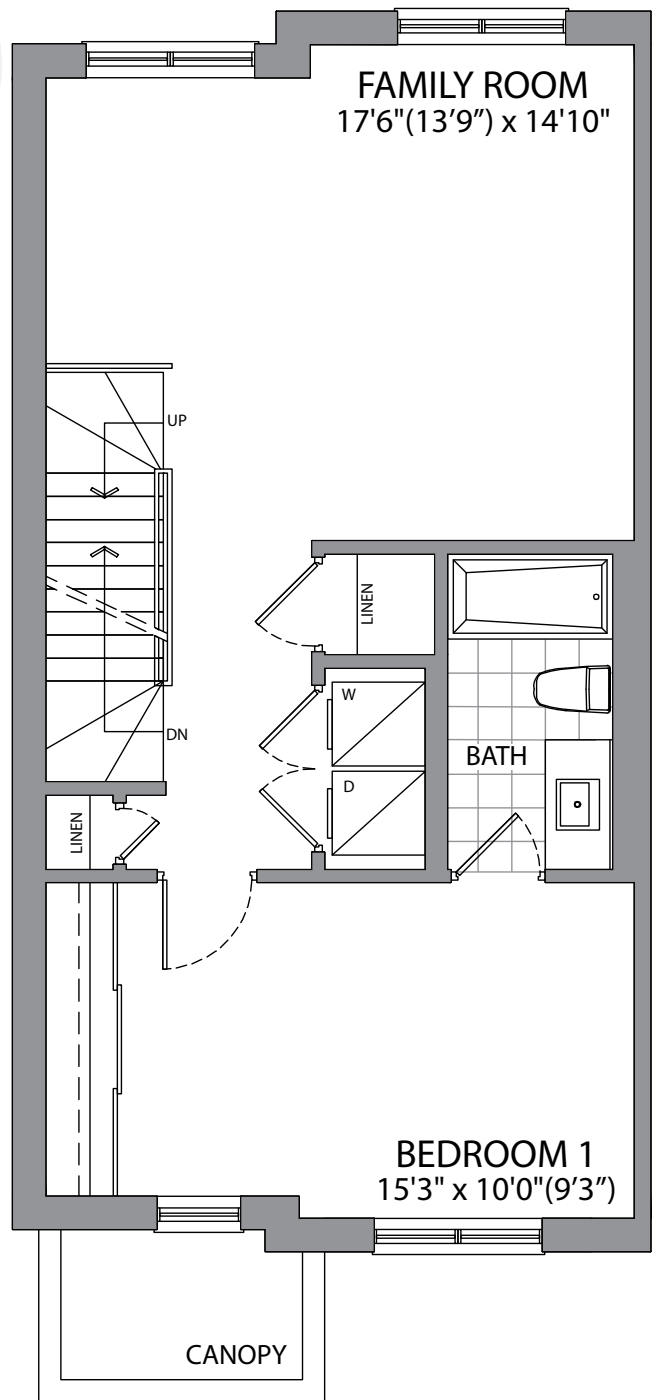


**Basement**  
225 sq. ft.





**Ground Floor**  
690 sq. ft.



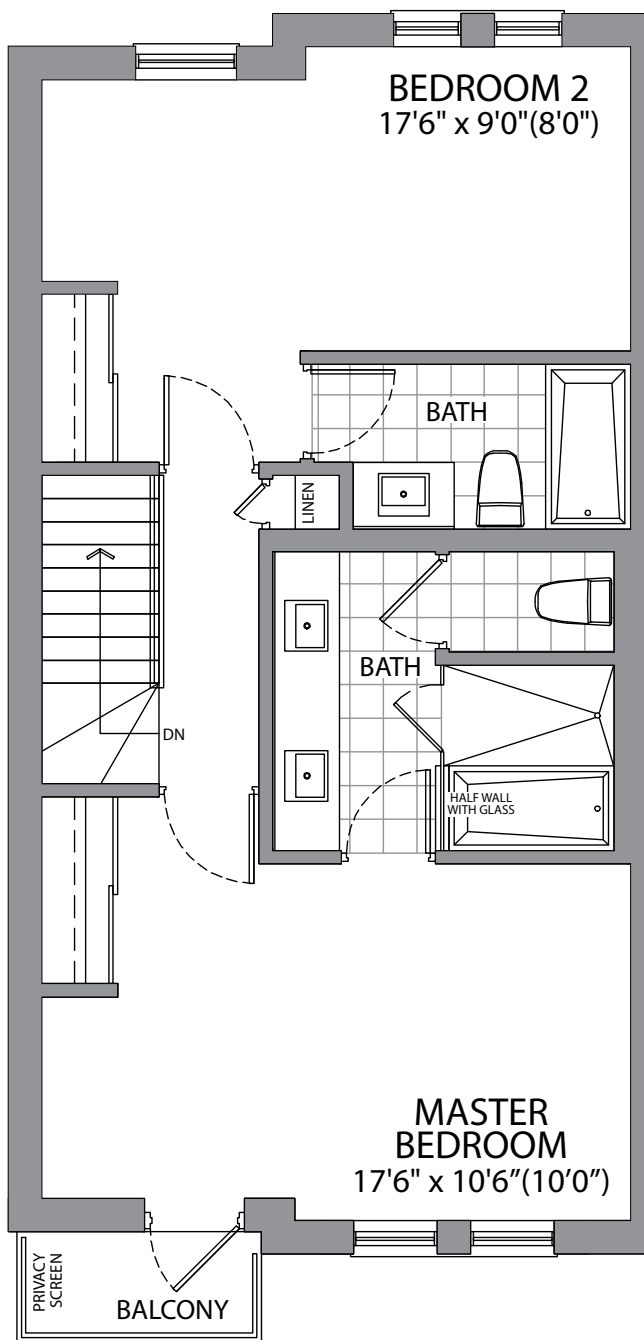
**Second Floor**  
690 sq. ft.

\*All drawings are artist's concept and may vary slightly from the final product. Actual usable floor space may vary from stated area and square footage has been calculated based on usable living space according to Tarion rules. Drawings may show optional features which may not be included in the base price. The number of interior and exterior steps may vary from what's shown based on individual lot/plot grading conditions. E. & O. E.

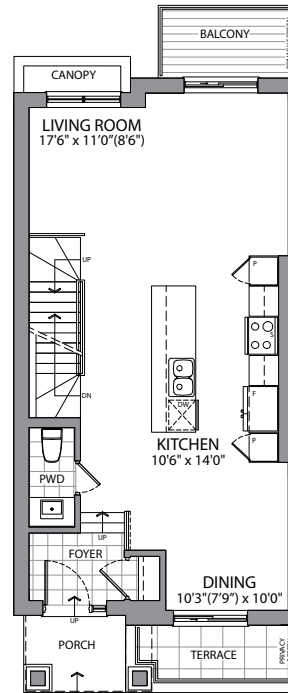


# Cheer

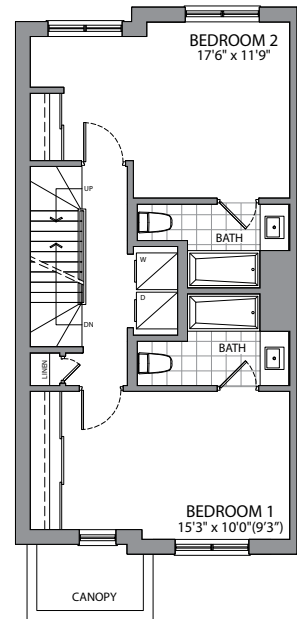
2,320 sq. ft.



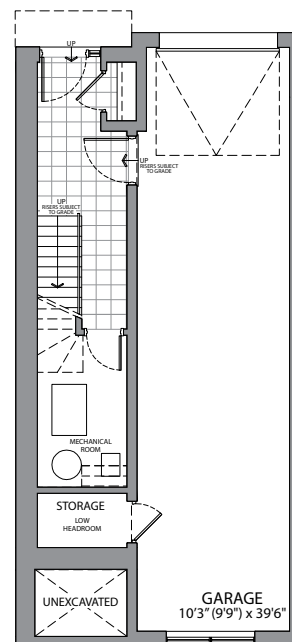
Third Floor  
690 sq. ft.



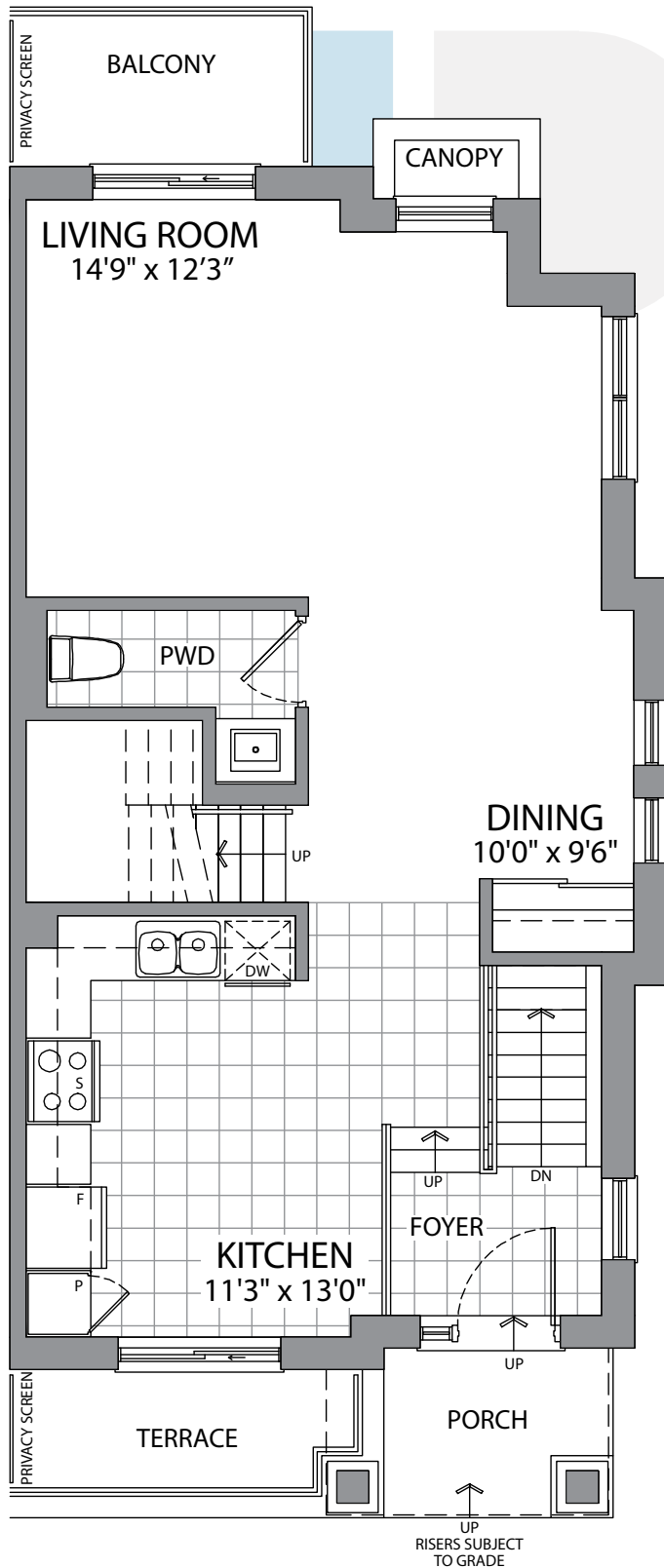
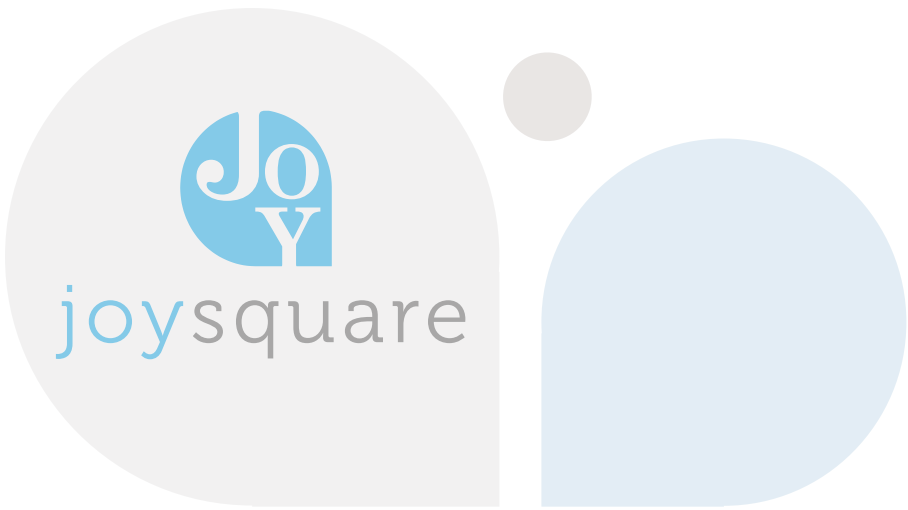
Alt. First Floor  
690 sq. ft.



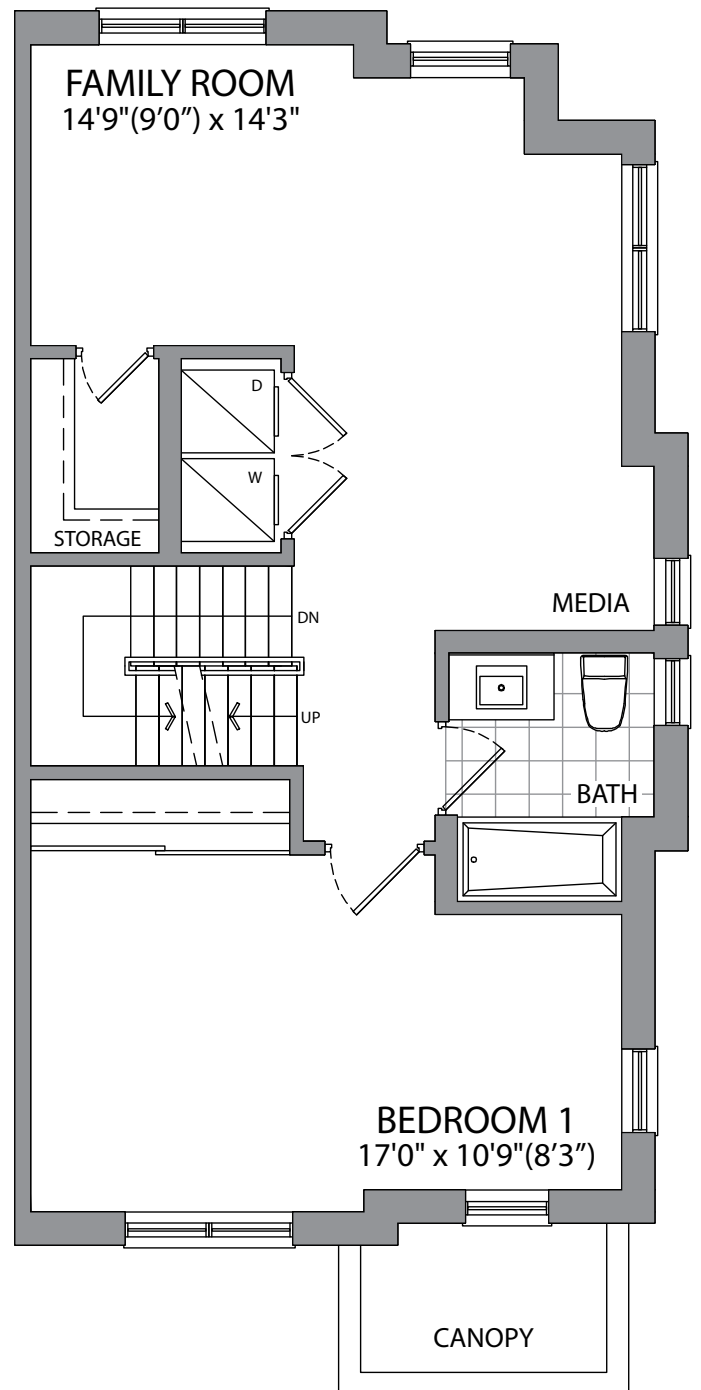
Alt. Second Floor  
690 sq. ft.



Basement  
250 sq. ft.



**Ground Floor**  
700 sq. ft.



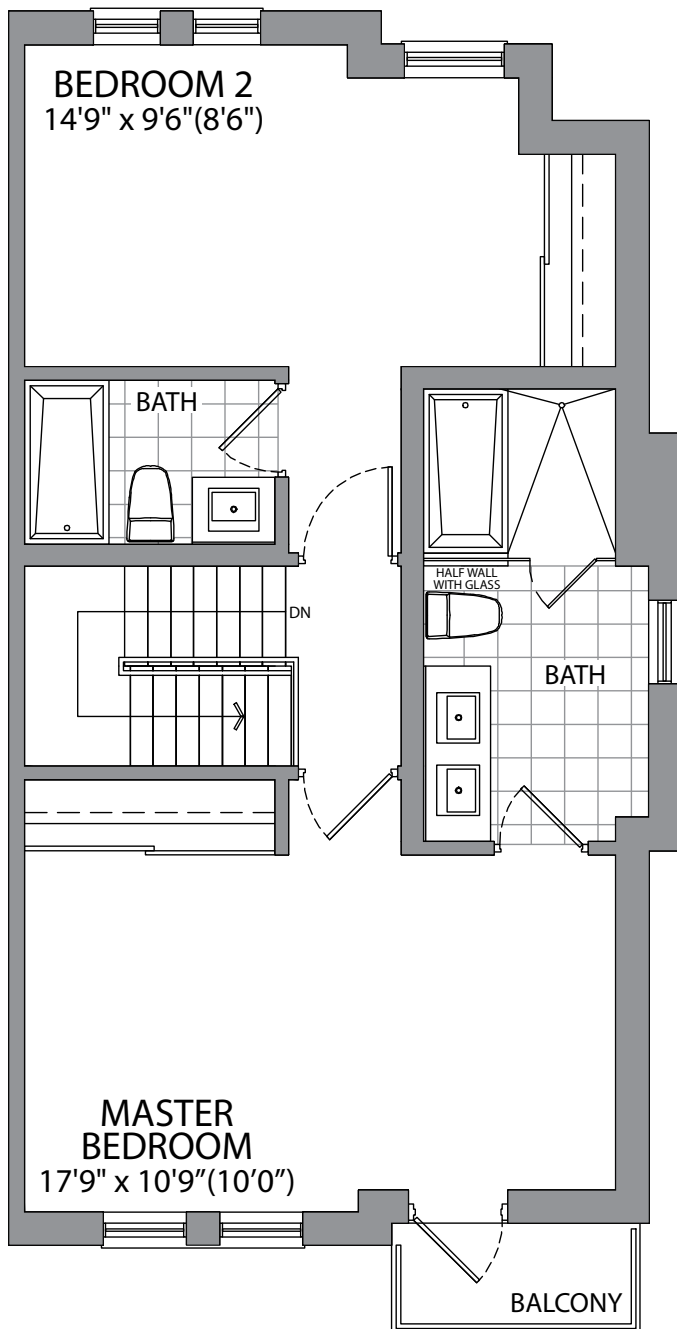
**Second Floor**  
700 sq. ft.

\*All drawings are artist's concept and may vary slightly from the final product. Actual usable floor space may vary from stated area and square footage has been calculated based on usable living space according to Tarion rules. Drawings may show optional features which may not be included in the base price. The number of interior and exterior steps may vary from what's shown based on individual lot/plot grading conditions. E. & O. E.

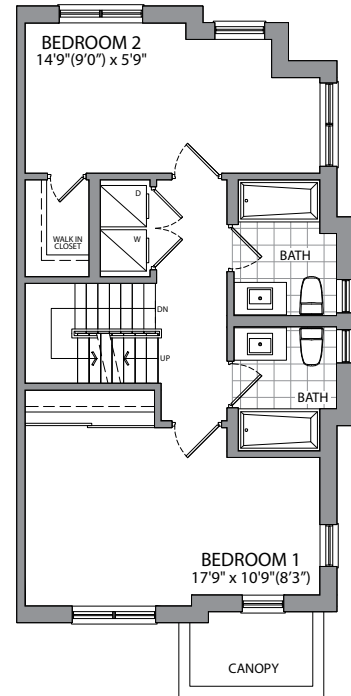


# Glee

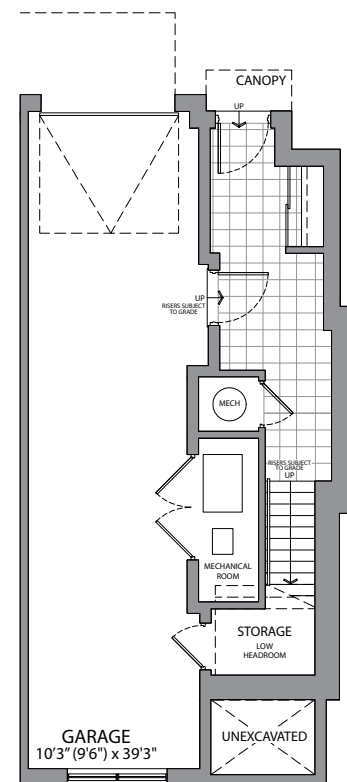
2,315 sq. ft.



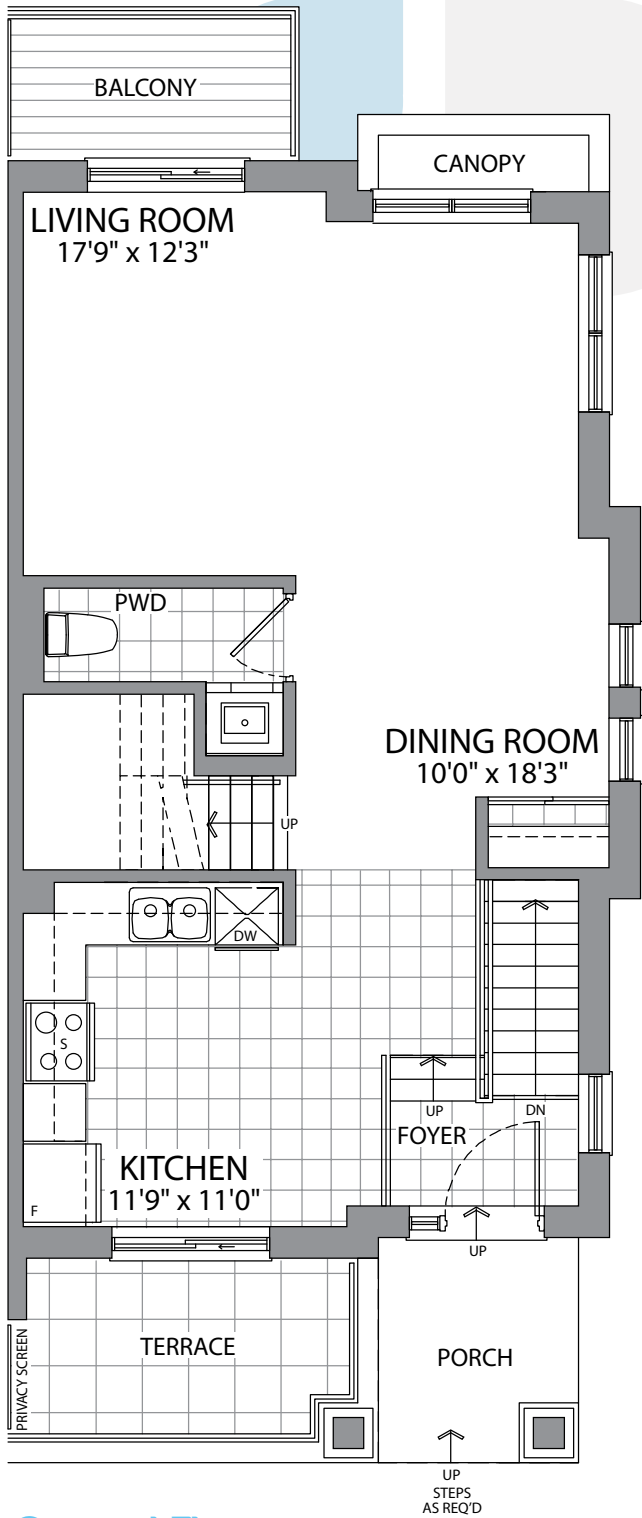
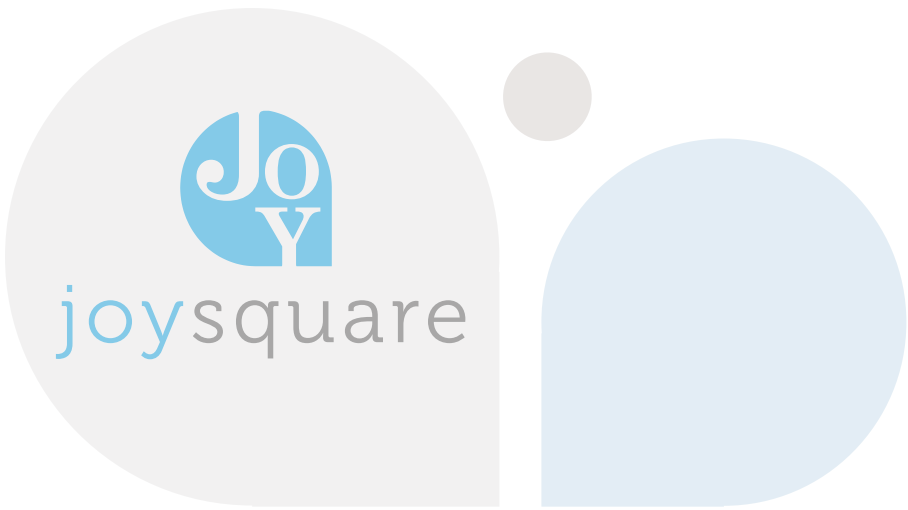
Third Floor  
700 sq. ft.



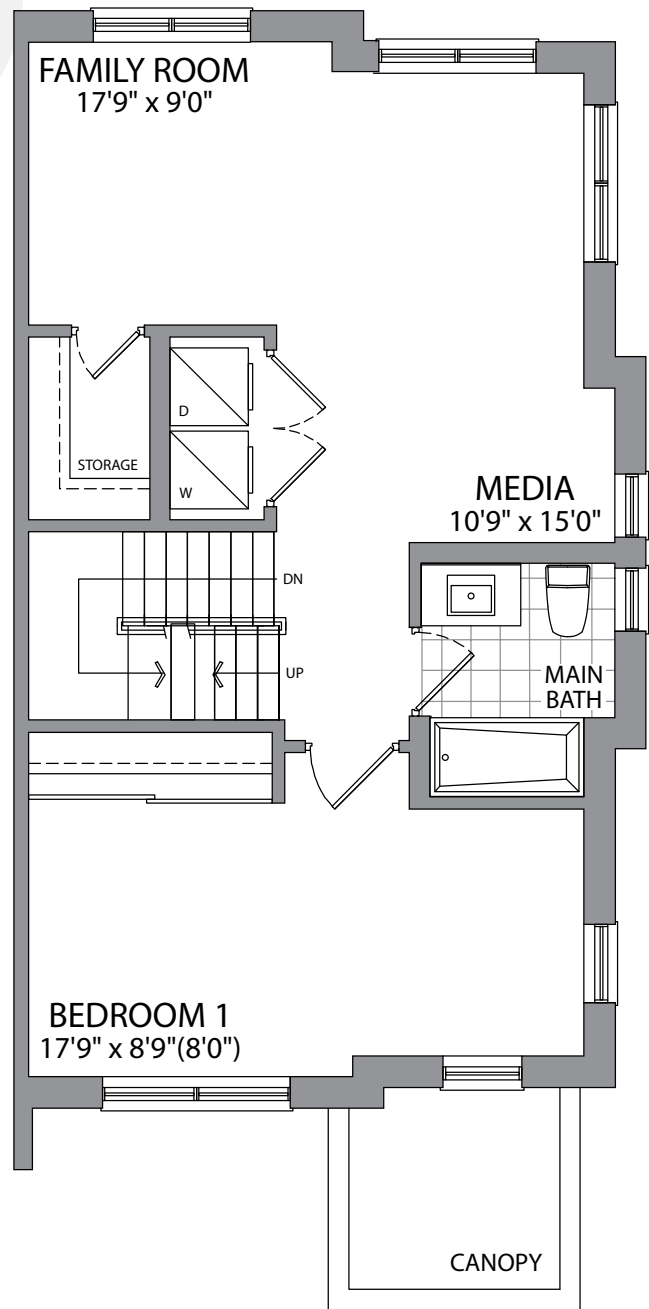
Alt. Second Floor  
700 sq. ft.



Basement  
215 sq. ft.



**Ground Floor**  
670 sq. ft.



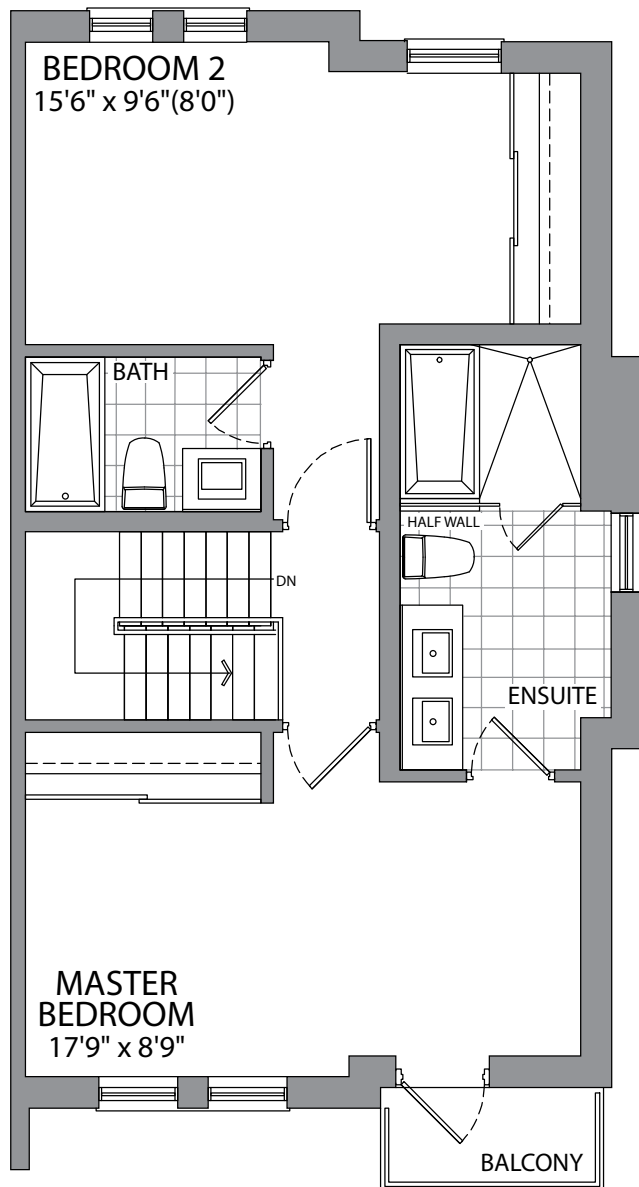
**Second Floor**  
670 sq. ft.

\*All drawings are artist's concept and may vary slightly from the final product. Actual usable floor space may vary from stated area and square footage has been calculated based on usable living space according to Tarion rules. Drawings may show optional features which may not be included in the base price. The number of interior and exterior steps may vary from what's shown based on individual lot/plot grading conditions. E. & O. E.

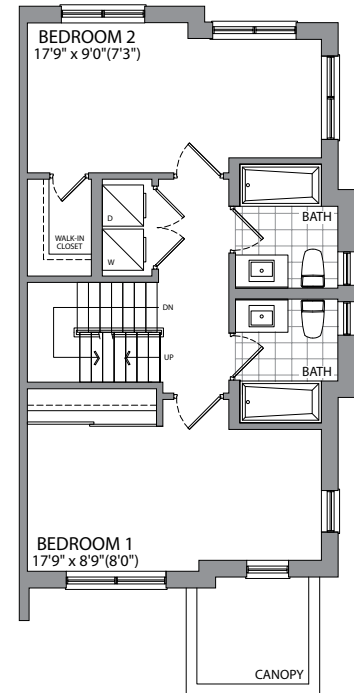


# Delight

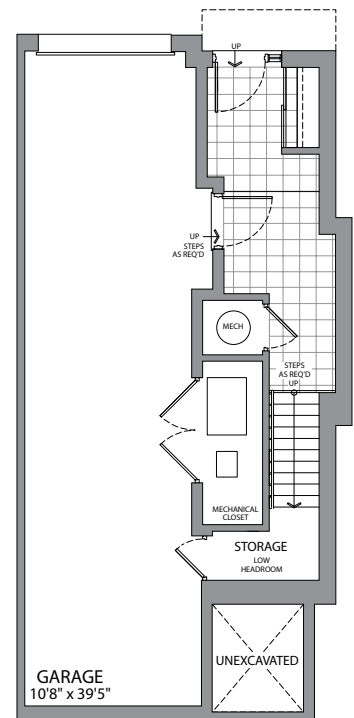
2,215 sq. ft.



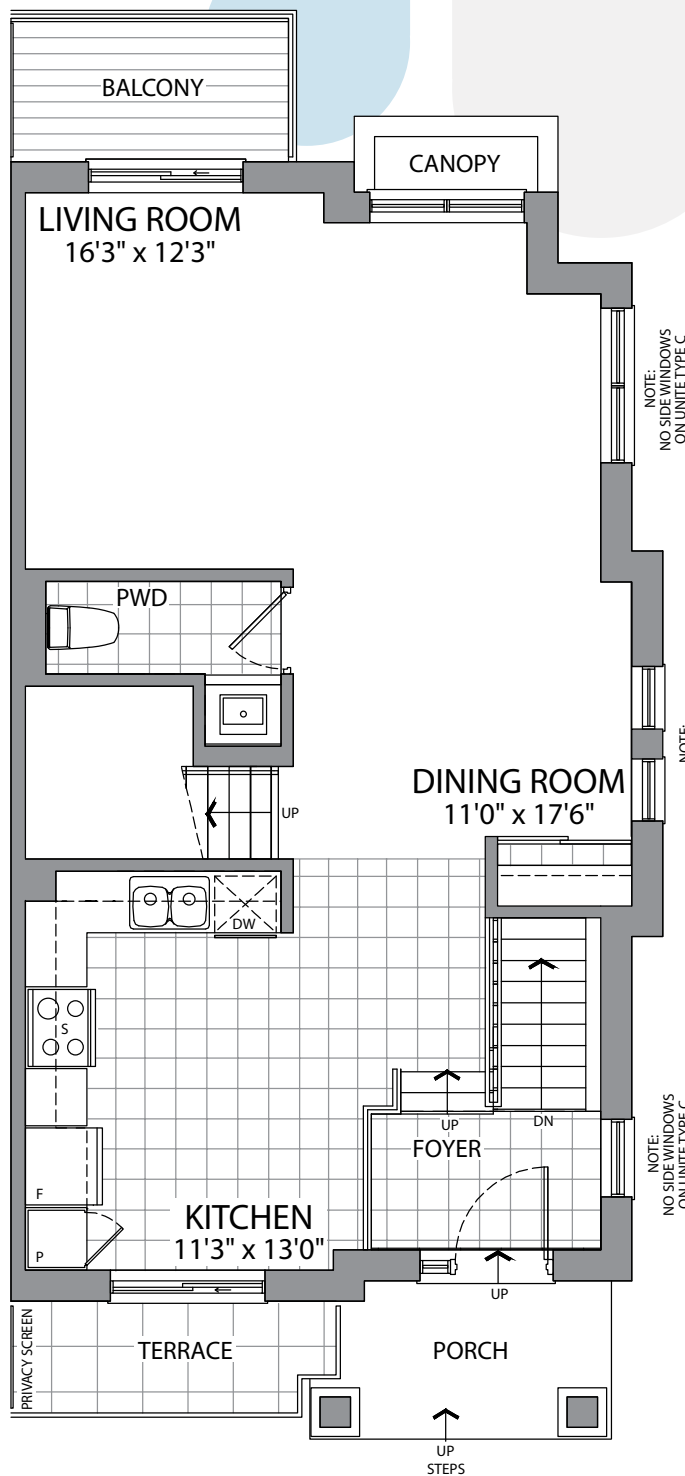
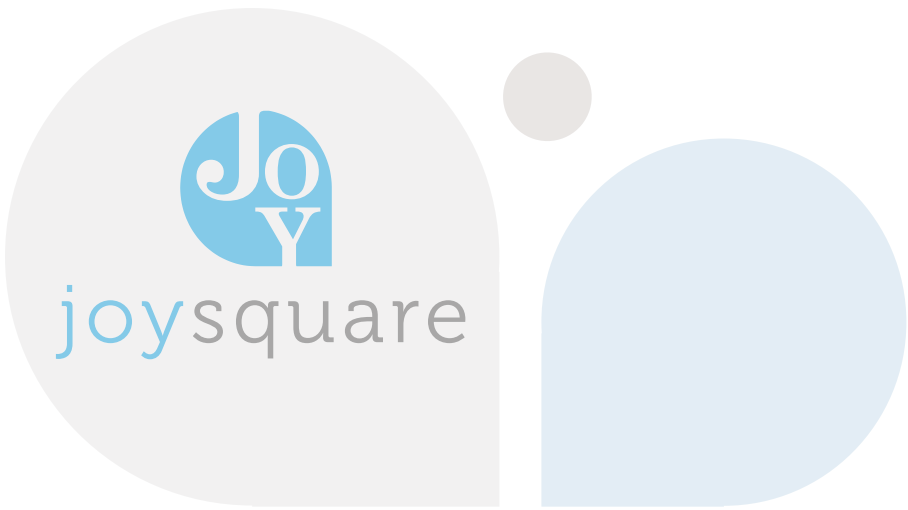
Third Floor  
670 sq. ft.



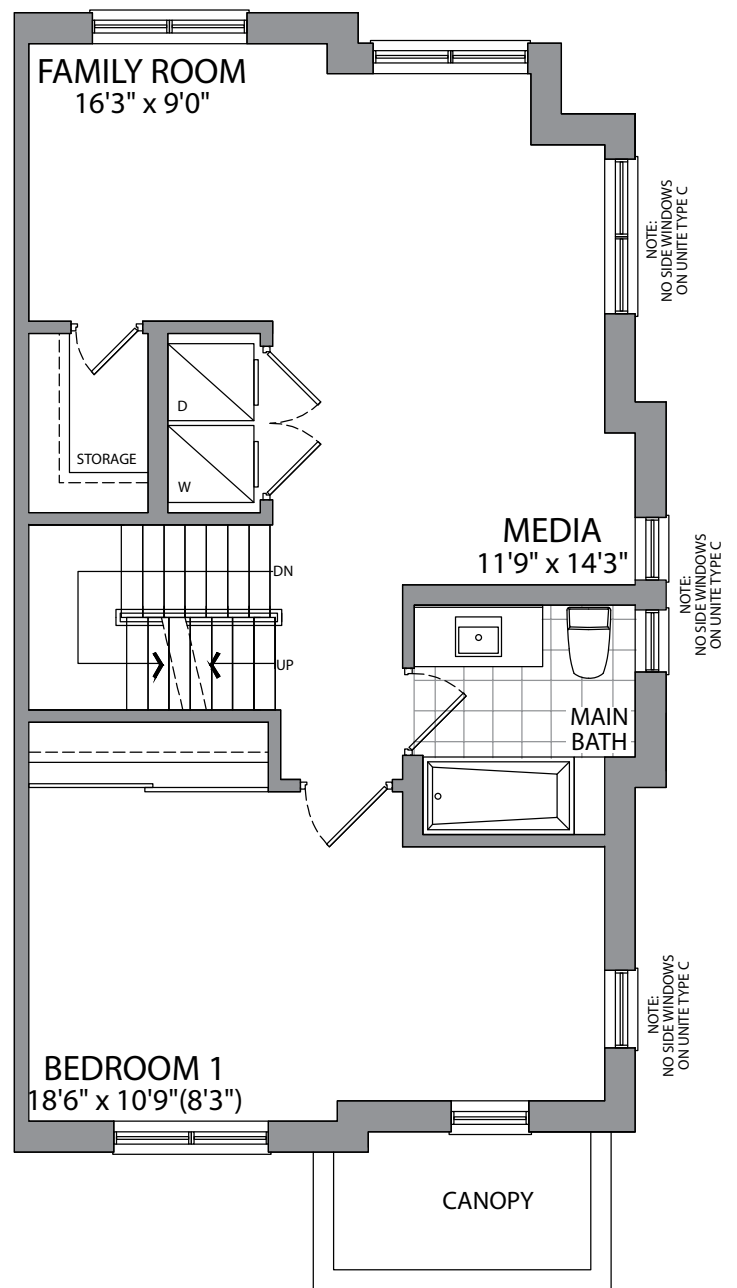
Alt. Second Floor  
670 sq. ft.



Basement  
205 sq. ft.



**Ground Floor**  
735 sq. ft.



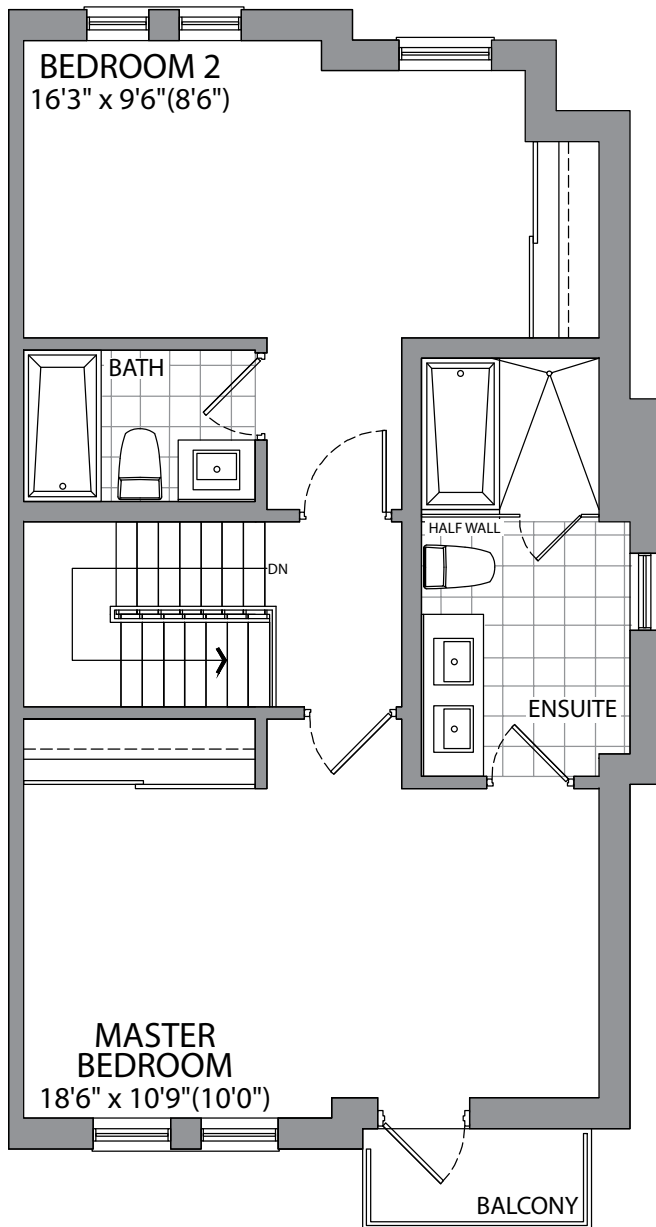
**Second Floor**  
735 sq. ft.

\*All drawings are artist's concept and may vary slightly from the final product. Actual usable floor space may vary from stated area and square footage has been calculated based on usable living space according to Tarion rules. Drawings may show optional features which may not be included in the base price. The number of interior and exterior steps may vary from what's shown based on individual lot/plot grading conditions. E. & O. E.

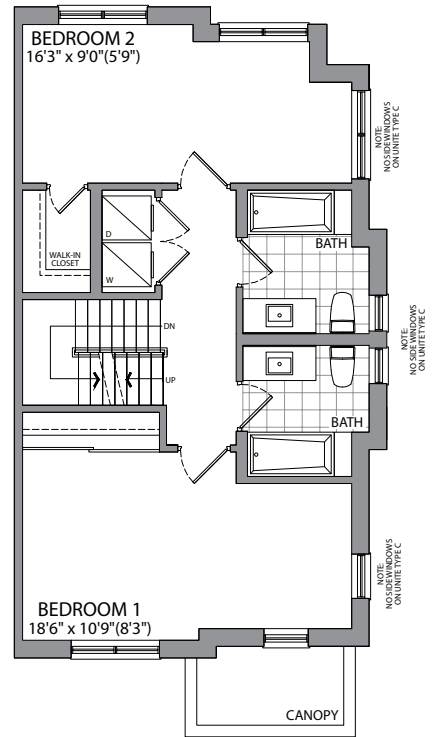


# Wonder

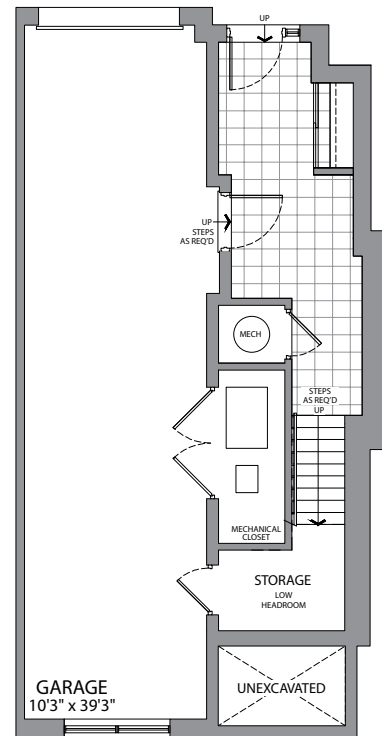
2,435 sq. ft.



**Third Floor**  
735 sq. ft.



**Alt. Second Floor**  
735 sq. ft.



**Basement**  
230 sq. ft.



## Quality is at the Core of everything we build.

The principals of Corebridge Development Corporation find special joy in city building, and in their creation of beautiful residential, retail and commercial developments.

A deep-seated commitment to excellence is at the core of every project we undertake, and every partnership we enter into.

With two decades of experience in the development industry, the principals of the company have succeeded in building a fully diversified and multi-disciplinary real estate group that makes strategic investments in the North American real estate market through equity investments, development and financing.

Drawing from all disciplines, the Group's management team is skilled in virtually every aspect of real estate development including acquisition, planning/land development, construction of residential (both low-rise & high-rise) and commercial, strategic sales and leasing, investment and financial management.

Over the past five years, Corebridge has focused on the Canadian market, including the Greater Toronto Area, where its principals' strong work ethic and reputation for integrity and innovation have been consistently demonstrated.





"A thing of beauty is a joy forever."

John Keats

Corebridge is dedicated to  
city building and the creation  
of beautiful developments.



[corebridge.ca](http://corebridge.ca)