

THE
WILLOWS

Exquisitely designed by Canderel for those who appreciate beauty, style and craftsmanship, The Willows, a new collection of townhomes at Bayview at The Village™, are situated mere steps from Bayview Village Shopping Centre and Bessarion Station, in the heart of a neighbourhood illuminated by breathtaking transformation.



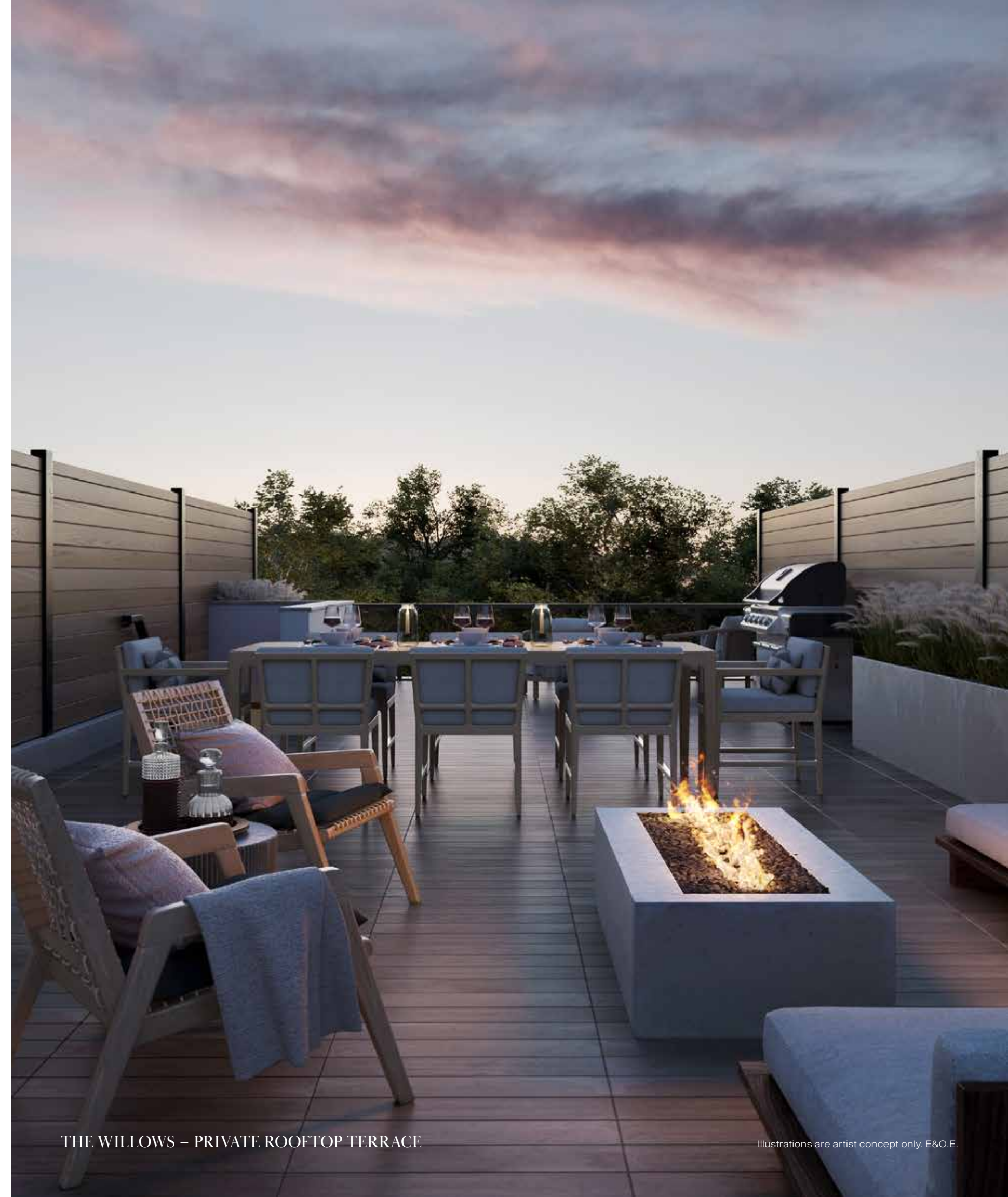
THE WILLOWS TOWNHOME COLLECTION

Illustrations are artist concept only. E&O.E.

PARKSIDE LIVING

A rare opportunity in the sought-after Bayview Village neighbourhood, The Willows is a boutique collection of 12 townhomes with generous outdoor space, some with expansive rooftop terraces perfect for hosting friends and family.

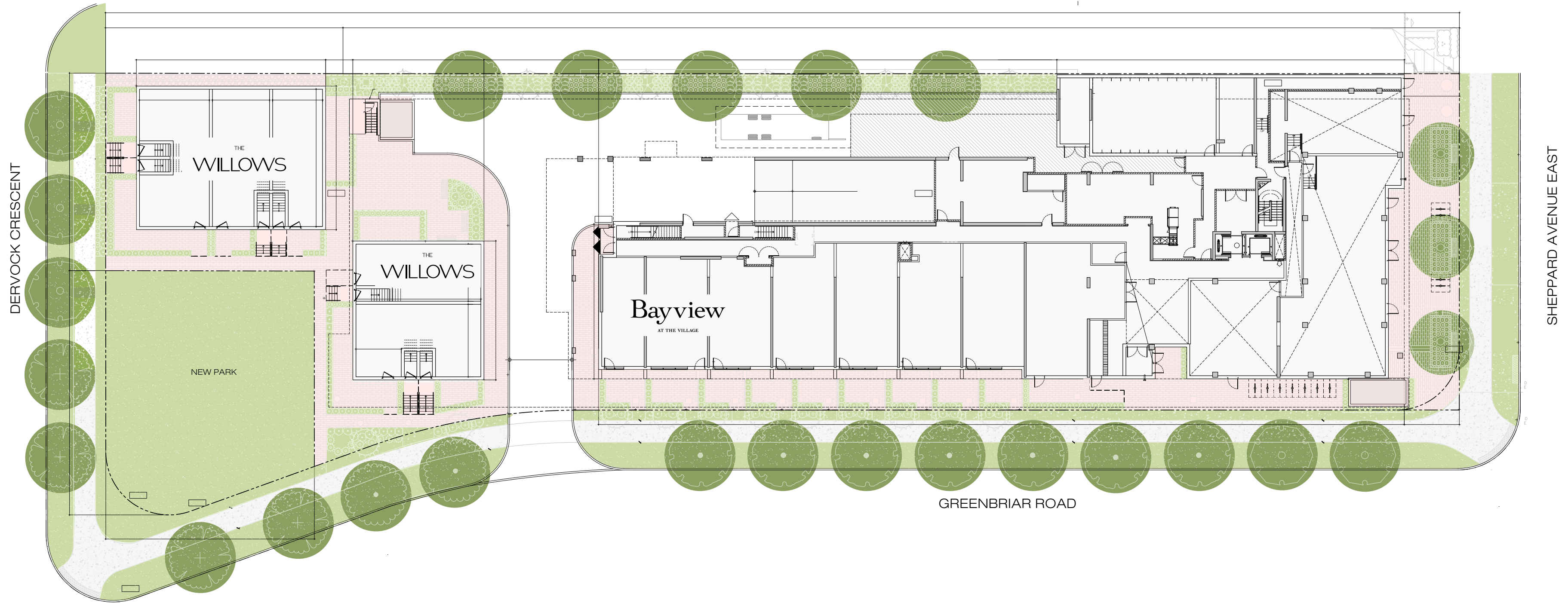
The Willows offers an exceptional lifestyle in a secluded community, surrounded by single family homes, and backing onto a beautiful park. At the same time, these masterfully crafted townhomes are part of the Bayview at The Village™ community, and provide access to all the luxury condominium amenities, including the Fitness Centre and Party Lounge.



THE WILLOWS – PRIVATE ROOFTOP TERRACE



SITEPLAN



YOUR NEW NEIGHBOURHOOD

HIGHWAY 401

BAYVIEW AVENUE

BAYVIEW VILLAGE
SHOPPING CENTRE

THE
WILLOWS

Bayview
AT THE VILLAGE™

PARK

3 MINUTE WALK
TO BESSARION
SUBWAY STATION

Bayview

AT THE VILLAGE™





LOBBY & TERRACE

Illustrations are artist concept only. E&O.E.



ELEVATORS
MAIL ROOM

Bayview
AT VILLAGE

The Willows Townhome Collection

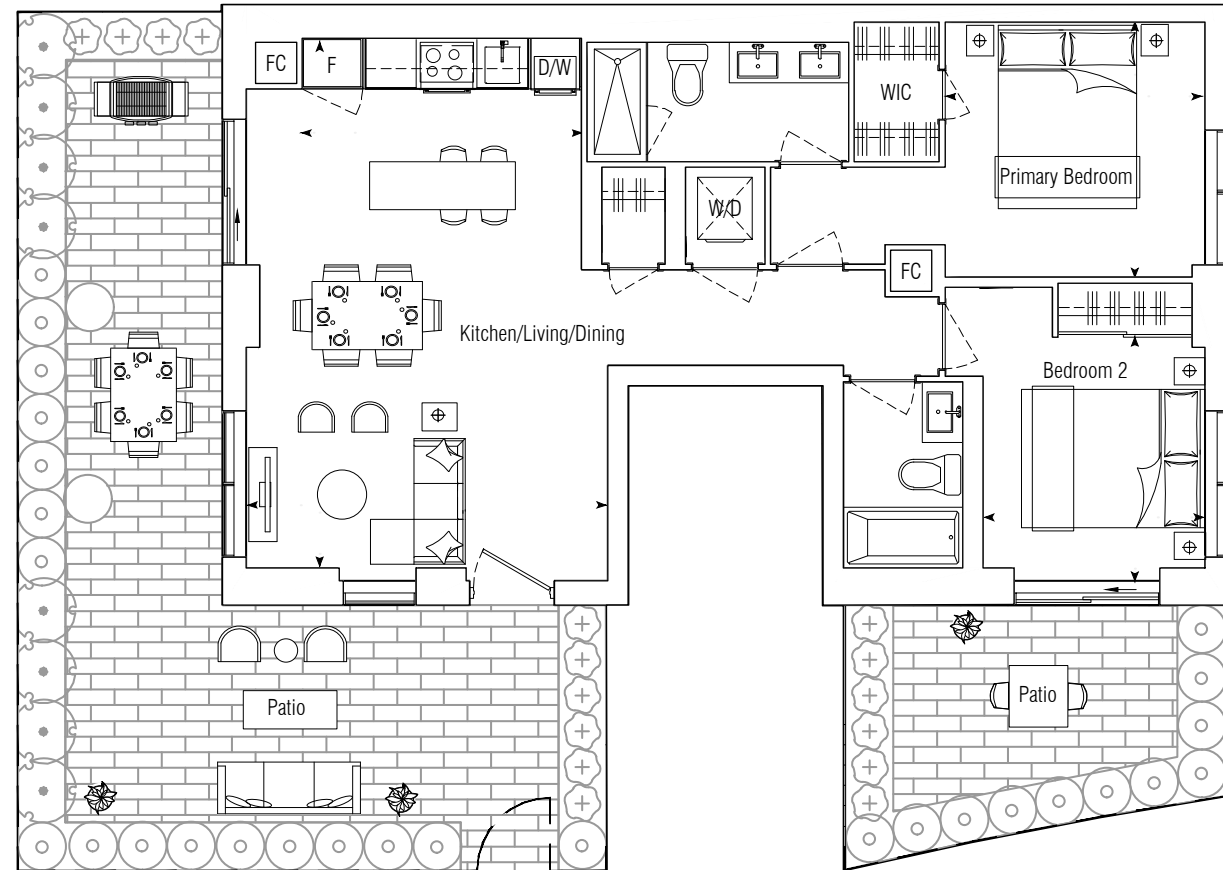
FLOORPLANS

TH-01

THE WILLOWS TOWNHOME COLLECTION

2 BEDROOM
 INTERIOR: 916 SQ.FT.
 EXTERIOR: 470 SQ.FT. + 146 SQ.FT.
 TOTAL: 1532 SQ.FT.

KITCHEN/LIVING/DINING 14'-9" x 21'-6"
 PRIMARY BEDROOM 10'-6" x 10'-6"
 BEDROOM 2 9'-0" x 10'-0"

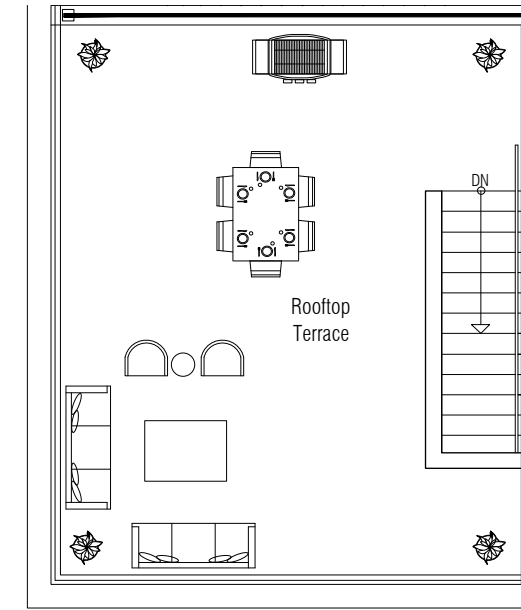


TH-02

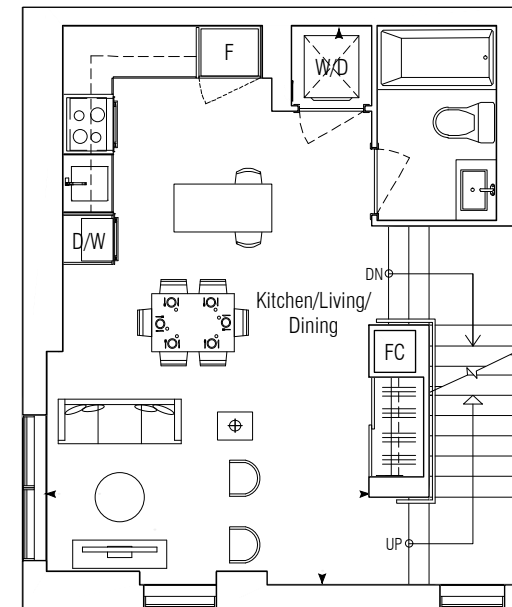
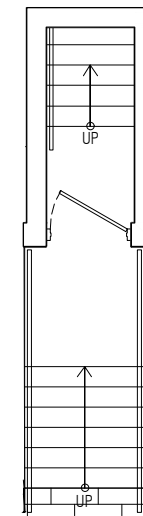
THE WILLOWS TOWNHOME COLLECTION

2 BEDROOM
 INTERIOR: 1057 SQ.FT.
 EXTERIOR: 465 SQ.FT.
 TOTAL: 1522 SQ.FT.

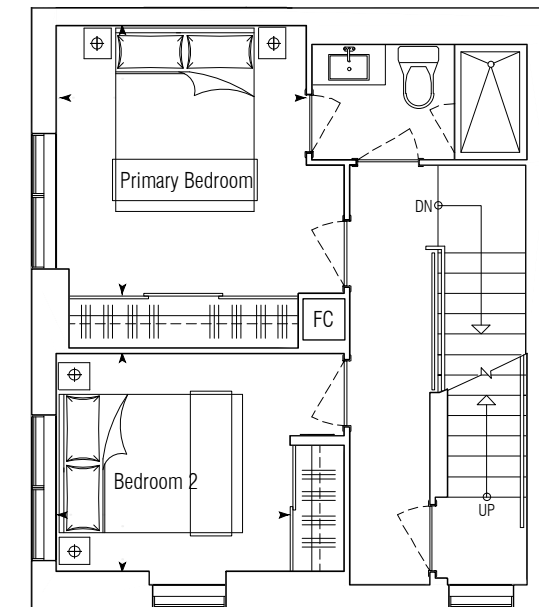
KITCHEN/LIVING/DINING 13'-3" x 22'-9"
 PRIMARY BEDROOM 11'-0" x 10'-0"
 BEDROOM 2 9'-6" x 9'-0"



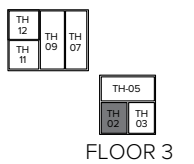
ROOF (FLOOR 3)



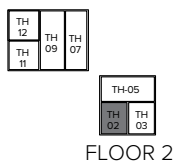
LOWER (MEZZ.)



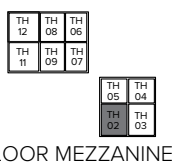
UPPER (FLOOR 2)



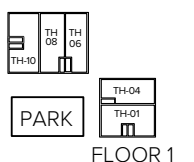
FLOOR 3



FLOOR 2



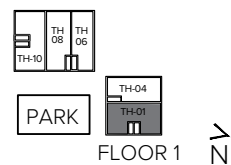
FLOOR MEZZANINE



FLOOR 1

ALL DIMENSIONS AND SPECIFICATIONS ARE APPROXIMATE. CERTAIN PLANS ARE REVERSE OR MIRROR IMAGE. BALCONY SQUARE FOOTAGES ARE ESTIMATED AND MAY VARY FROM THAT STATED. PLEASE SEE SALES REPRESENTATIVE FOR DETAILS. FURNITURE NOT INCLUDED. REFER TO KEY PLAN FOR UNIT LOCATION AND ORIENTATION. PREPARED MAR 8, 2021

ALL DIMENSIONS AND SPECIFICATIONS ARE APPROXIMATE. CERTAIN PLANS ARE REVERSE OR MIRROR IMAGE. BALCONY SQUARE FOOTAGES ARE ESTIMATED AND MAY VARY FROM THAT STATED. PLEASE SEE SALES REPRESENTATIVE FOR DETAILS. FURNITURE NOT INCLUDED. REFER TO KEY PLAN FOR UNIT LOCATION AND ORIENTATION. PREPARED MAR 8, 2021



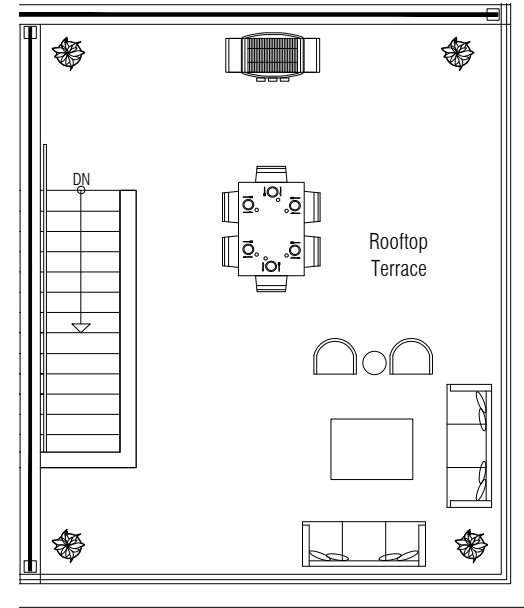
FLOOR 1

TH-03

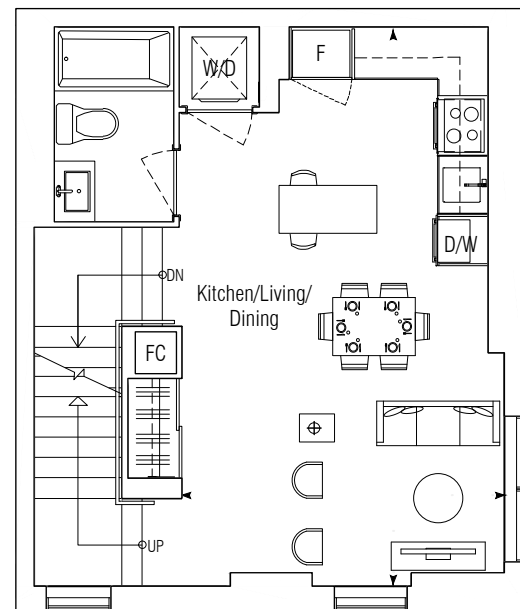
THE WILLOWS TOWNHOME COLLECTION

3 BEDROOM
 INTERIOR: 1057 SQ.FT.
 EXTERIOR: 465 SQ.FT.
 TOTAL: 1522 SQ.FT.

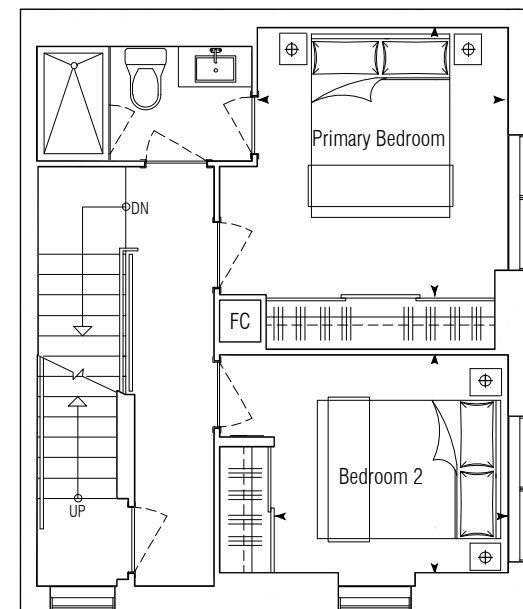
KITCHEN/LIVING/DINING 13'-3" x 22'-9"
 PRIMARY BEDROOM 10'-0" x 11'-0"
 BEDROOM 2 9'-6" x 9'-0"



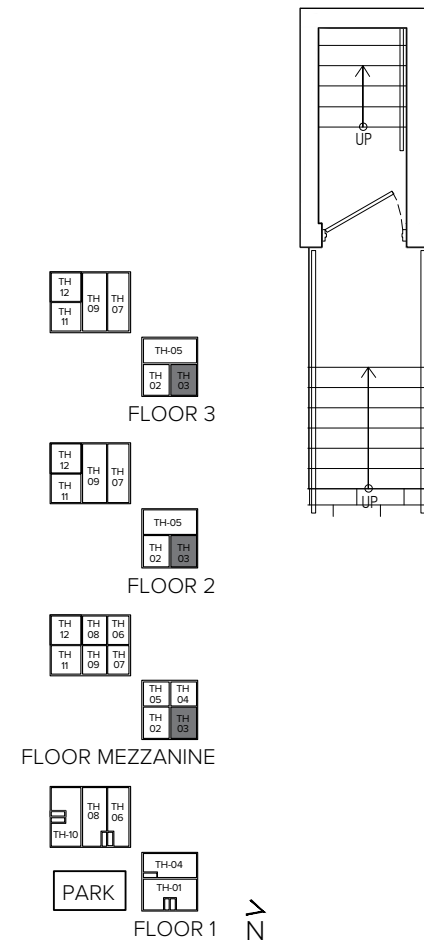
ROOF (FLOOR 3)



LOWER (MEZZ.)



UPPER (FLOOR 2)



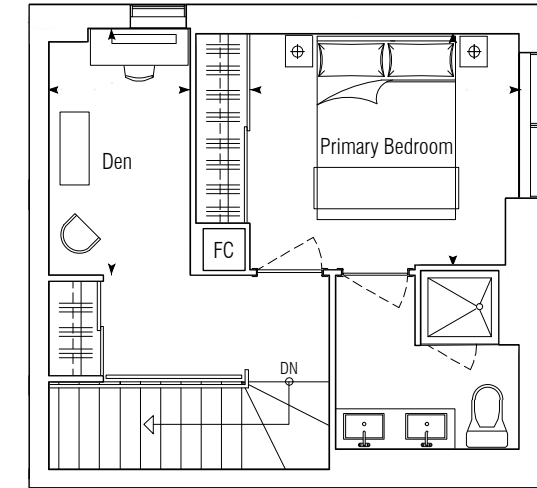
ALL DIMENSIONS AND SPECIFICATIONS ARE APPROXIMATE. CERTAIN PLANS ARE REVERSE OR MIRROR IMAGE. BALCONY SQUARE FOOTAGES ARE ESTIMATED AND MAY VARY FROM THAT STATED. PLEASE SEE SALES REPRESENTATIVE FOR DETAILS. FURNITURE NOT INCLUDED. REFER TO KEY PLAN FOR UNIT LOCATION AND ORIENTATION. PREPARED MAR 8, 2021

TH-04

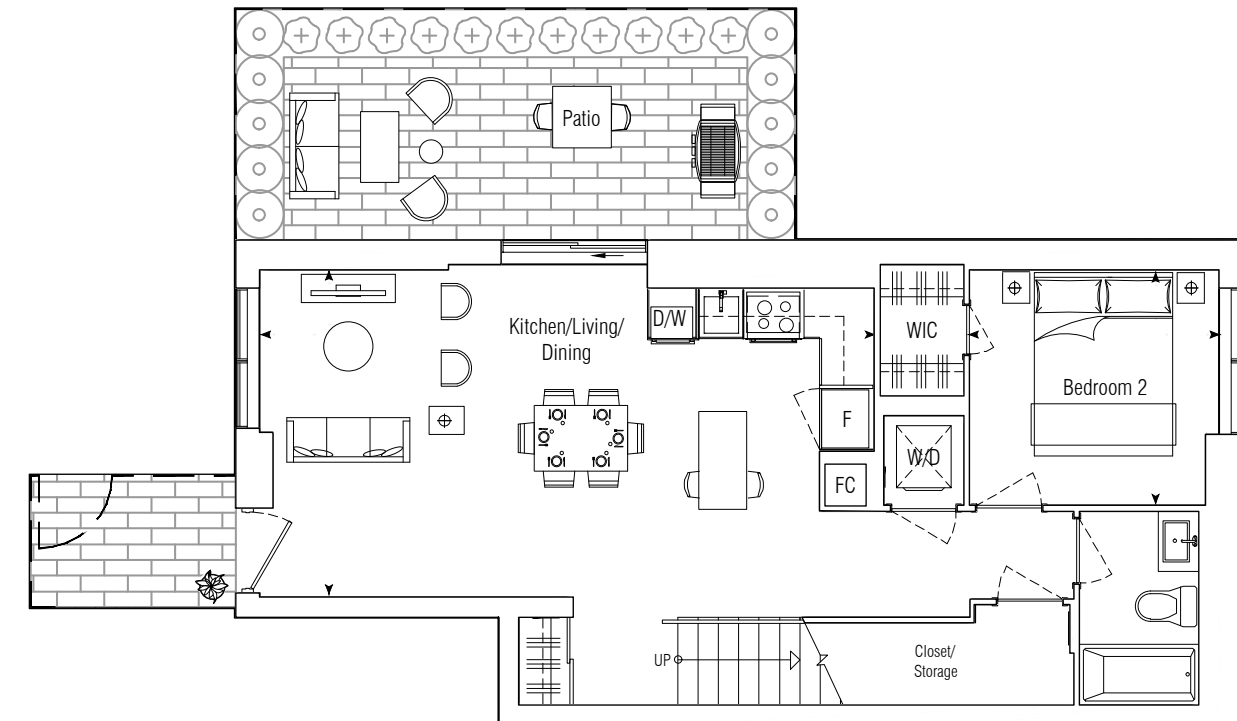
THE WILLOWS TOWNHOME COLLECTION

2 BEDROOM + DEN
 INTERIOR: 1154 SQ.FT.
 EXTERIOR: 219 SQ.FT.
 TOTAL: 1373 SQ.FT.

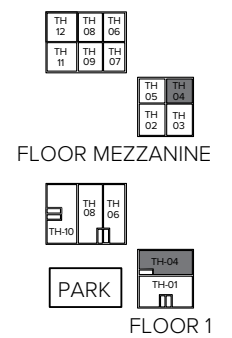
KITCHEN/LIVING/DINING 25'-3" x 13'-3"
 PRIMARY BEDROOM 11'-0" x 9'-6"
 BEDROOM 2 10'-3" x 9'-6"
 DEN 5'-9" x 10'-0"



UPPER (MEZZ.)



LOWER (FLOOR 1)



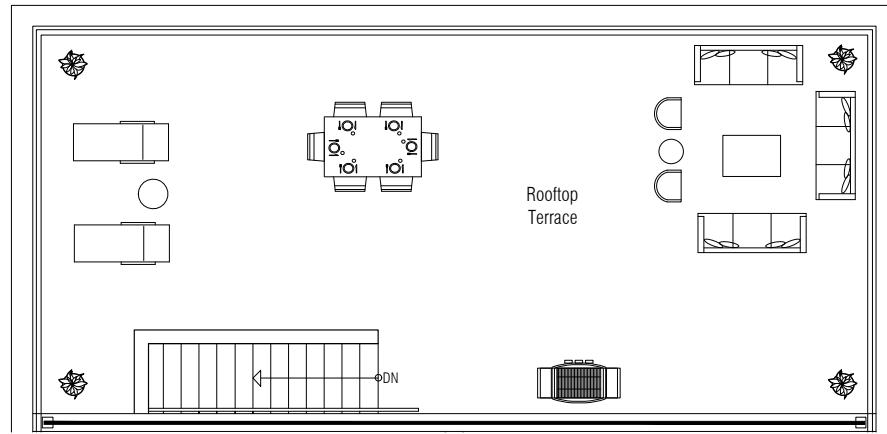
ALL DIMENSIONS AND SPECIFICATIONS ARE APPROXIMATE. CERTAIN PLANS ARE REVERSE OR MIRROR IMAGE. BALCONY SQUARE FOOTAGES ARE ESTIMATED AND MAY VARY FROM THAT STATED. PLEASE SEE SALES REPRESENTATIVE FOR DETAILS. FURNITURE NOT INCLUDED. REFER TO KEY PLAN FOR UNIT LOCATION AND ORIENTATION. PREPARED MAR 8, 2021

TH-05

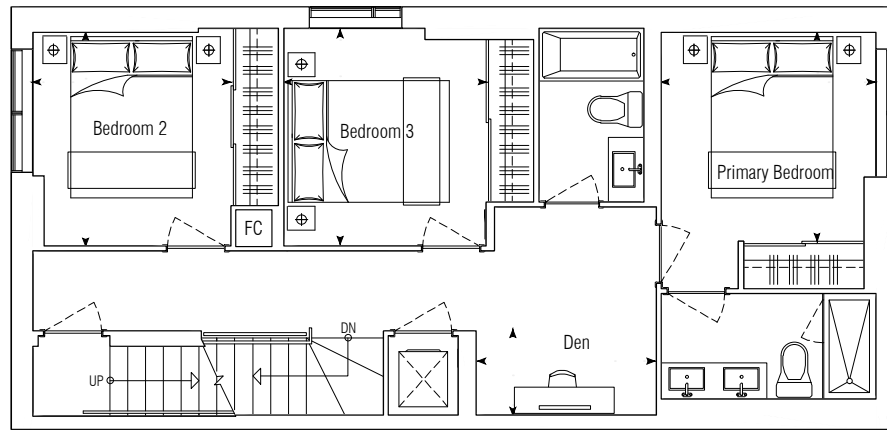
THE WILLOWS TOWNHOME COLLECTION

3 BEDROOM + DEN
 INTERIOR: 1272 SQ.FT.
 EXTERIOR: 769 SQ.FT.
 TOTAL: 2041 SQ.FT.

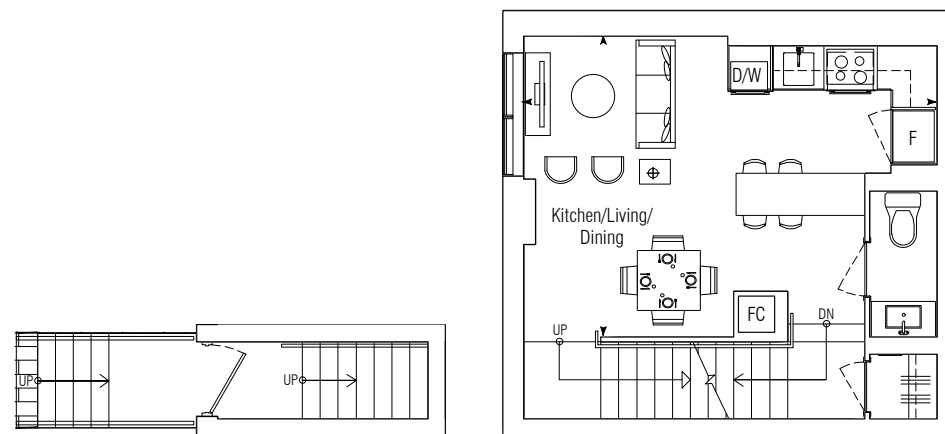
KITCHEN/LIVING/DINING 19'-3" x 14'-0"
 PRIMARY BEDROOM 10'-0" x 9'-9"
 BEDROOM 2 9'-3" x 10'-0"
 BEDROOM 3 9'-6" x 10'-0"
 DEN 8'-3" x 4'-0"



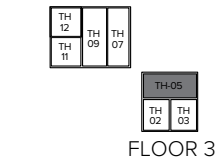
ROOF (FLOOR 3)



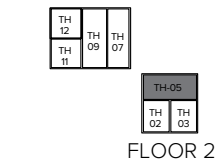
UPPER (FLOOR 2)



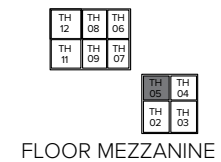
LOWER (MEZZ.)



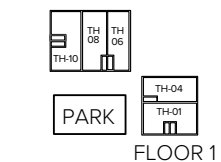
FLOOR 3



FLOOR 2



FLOOR MEZZANINE



FLOOR 1

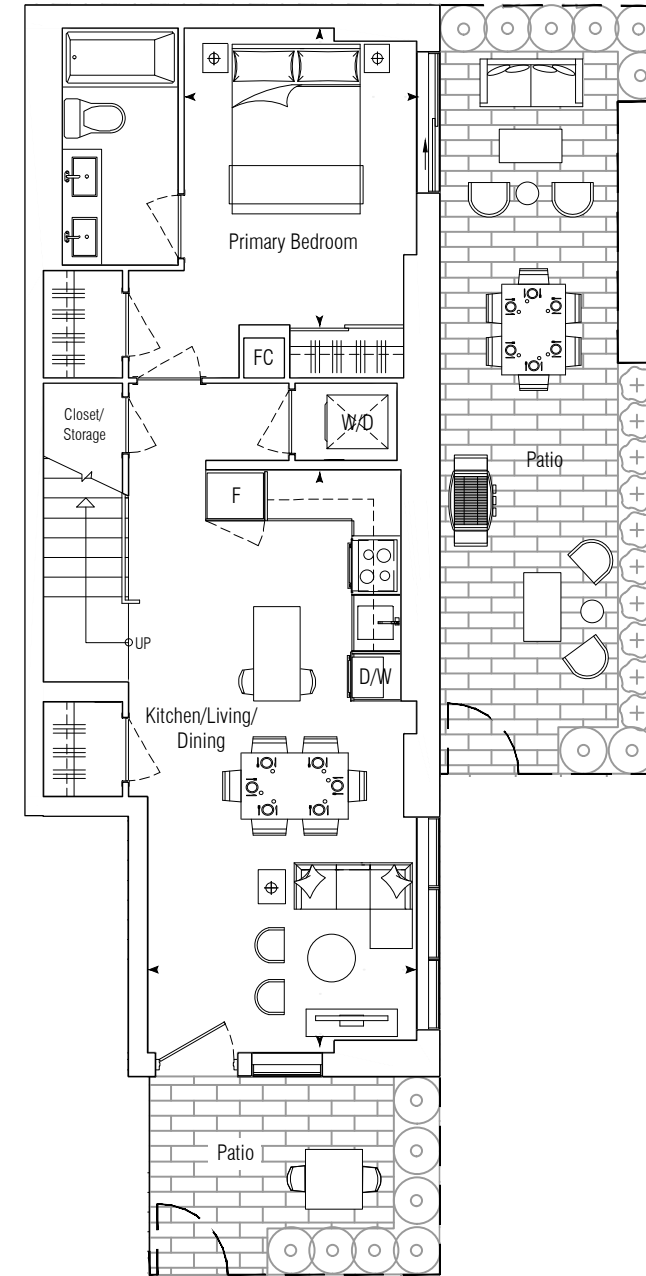
ALL DIMENSIONS AND SPECIFICATIONS ARE APPROXIMATE. CERTAIN PLANS ARE REVERSE OR MIRROR IMAGE. BALCONY SQUARE FOOTAGES ARE ESTIMATED AND MAY VARY FROM THAT STATED. PLEASE SEE SALES REPRESENTATIVE FOR DETAILS. FURNITURE NOT INCLUDED. REFER TO KEY PLAN FOR UNIT LOCATION AND ORIENTATION. PREPARED MAR 8, 2021

TH-06

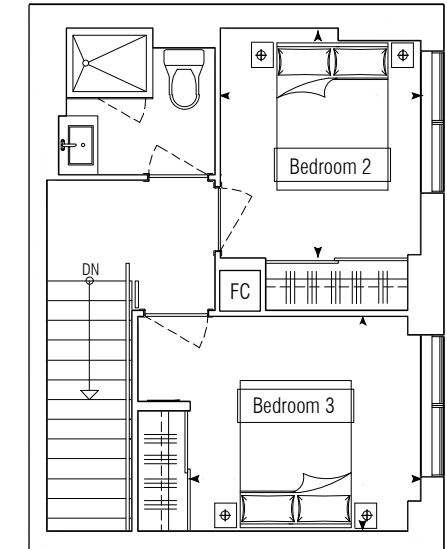
THE WILLOWS TOWNHOME COLLECTION

3 BEDROOM
 INTERIOR: 1114 SQ.FT.
 EXTERIOR: 288 SQ.FT + 104 SQ.FT.
 TOTAL: 1506 SQ.FT.

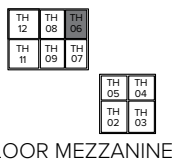
KITCHEN/LIVING/DINING 11'-3" x 24'-3"
 PRIMARY BEDROOM 9'-9" x 12'-6"
 BEDROOM 2 8'-6" x 9'-6"
 BEDROOM 3 9'-9" x 9'-0"



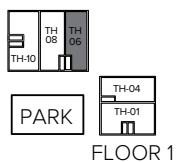
LOWER (FLOOR 1)



UPPER (MEZZ.)



FLOOR MEZZANINE



FLOOR 1

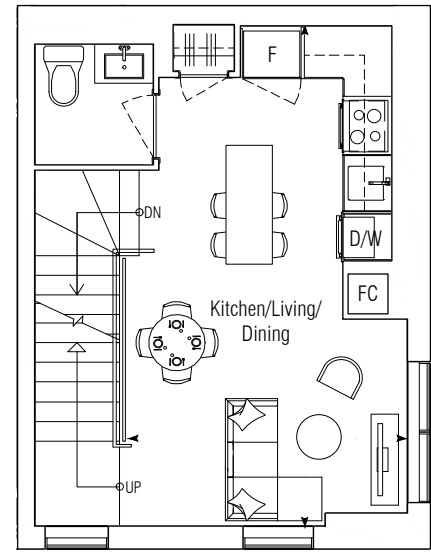
ALL DIMENSIONS AND SPECIFICATIONS ARE APPROXIMATE. CERTAIN PLANS ARE REVERSE OR MIRROR IMAGE. BALCONY SQUARE FOOTAGES ARE ESTIMATED AND MAY VARY FROM THAT STATED. PLEASE SEE SALES REPRESENTATIVE FOR DETAILS. FURNITURE NOT INCLUDED. REFER TO KEY PLAN FOR UNIT LOCATION AND ORIENTATION. PREPARED MAR 8, 2021

TH-07

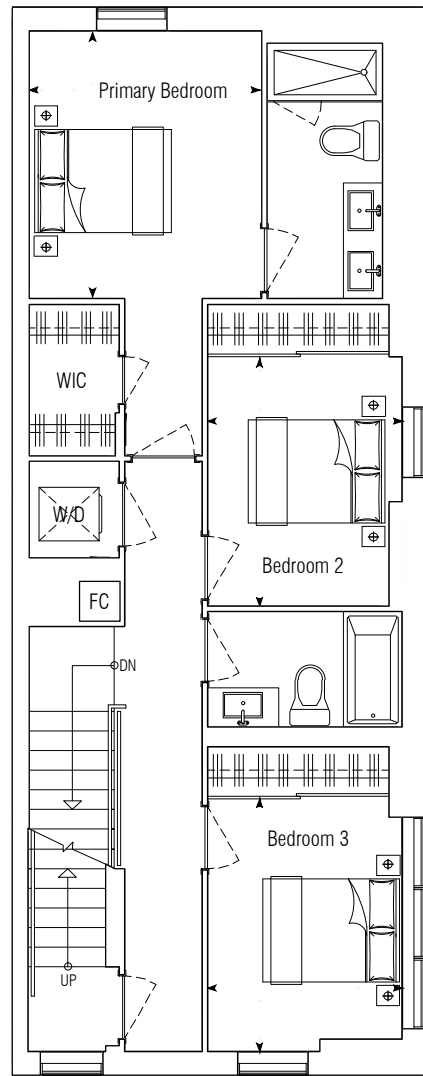
THE WILLOWS TOWNHOME COLLECTION

3 BEDROOM
 INTERIOR: 1232 SQ.FT.
 EXTERIOR: 742 SQ.FT.
 TOTAL: 1974 SQ.FT.

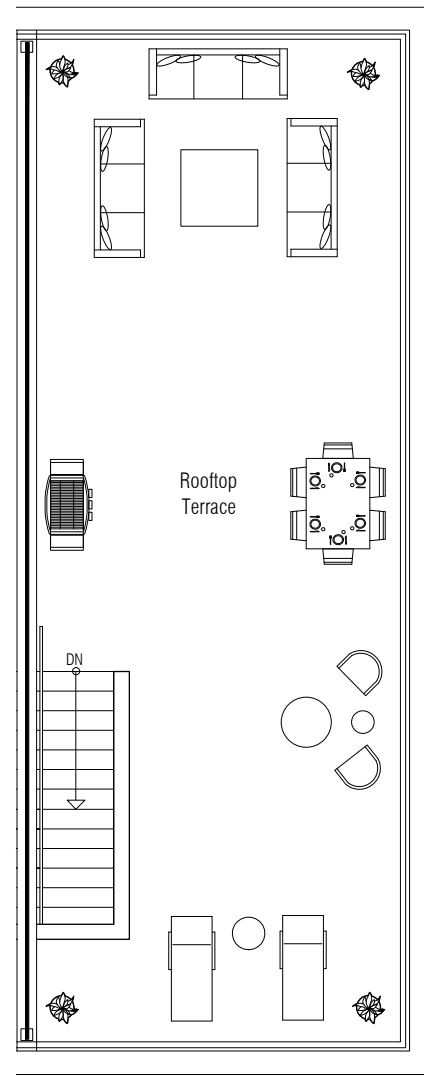
KITCHEN/LIVING/DINING 11'-9" x 21'-3"
 PRIMARY BEDROOM 9'-9" x 11'-3"
 BEDROOM 2 8'-3" x 10'-6"
 BEDROOM 3 8'-3" x 10'-9"



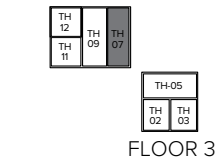
LOWER (MEZZ.)



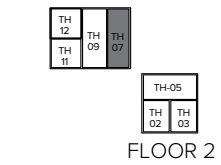
UPPER (FLOOR 2)



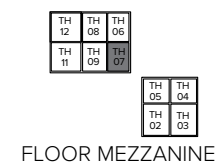
ROOF (FLOOR 3)



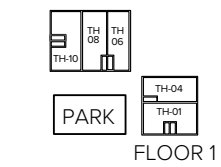
FLOOR 3



FLOOR 2



FLOOR MEZZANINE



FLOOR 1

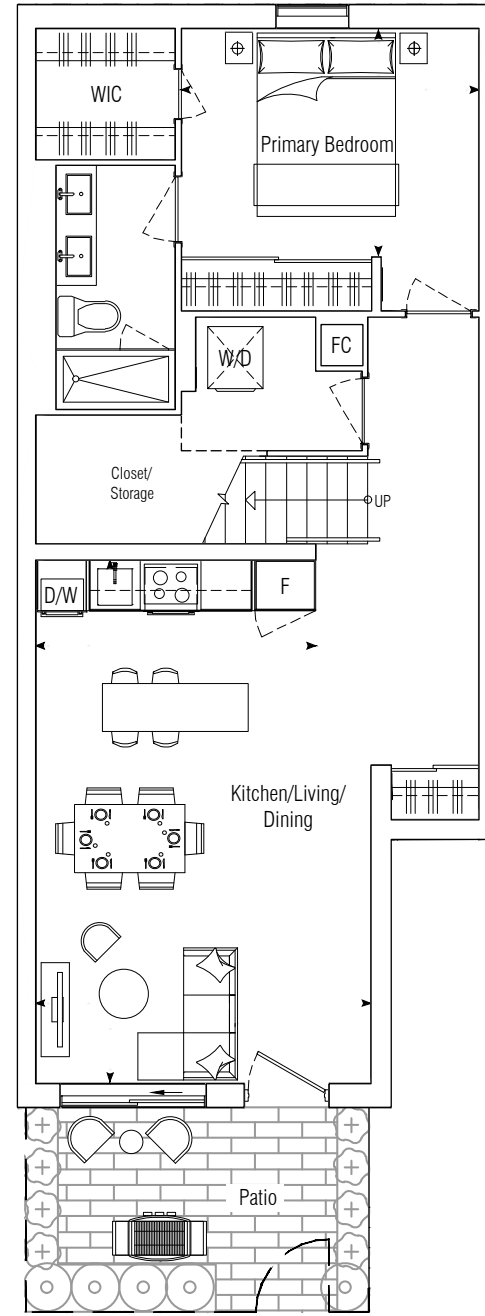
ALL DIMENSIONS AND SPECIFICATIONS ARE APPROXIMATE. CERTAIN PLANS ARE REVERSE OR MIRROR IMAGE. BALCONY SQUARE FOOTAGES ARE ESTIMATED AND MAY VARY FROM THAT STATED. PLEASE SEE SALES REPRESENTATIVE FOR DETAILS. FURNITURE NOT INCLUDED. REFER TO KEY PLAN FOR UNIT LOCATION AND ORIENTATION. PREPARED MAR 8, 2021

TH-08

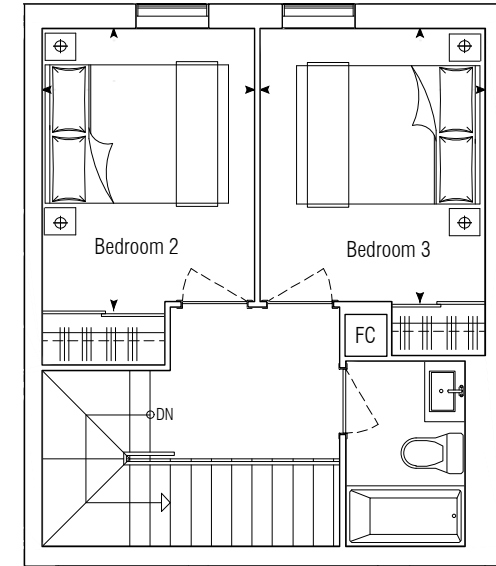
THE WILLOWS TOWNHOME COLLECTION

3 BEDROOM
 INTERIOR: 1237 SQ.FT.
 EXTERIOR: 119 SQ.FT.
 TOTAL: 1356 SQ.FT.

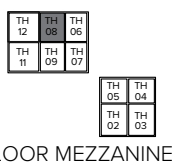
KITCHEN/LIVING/DINING 13'-9" x 21'-6"
 PRIMARY BEDROOM 12'-3" x 9'-3"
 BEDROOM 2 8'-9" x 11'-6"
 BEDROOM 3 9'-3" x 11'-3"



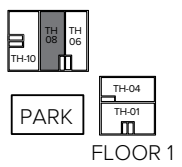
LOWER (FLOOR 1)



UPPER (MEZZ.)



FLOOR MEZZANINE



FLOOR 1

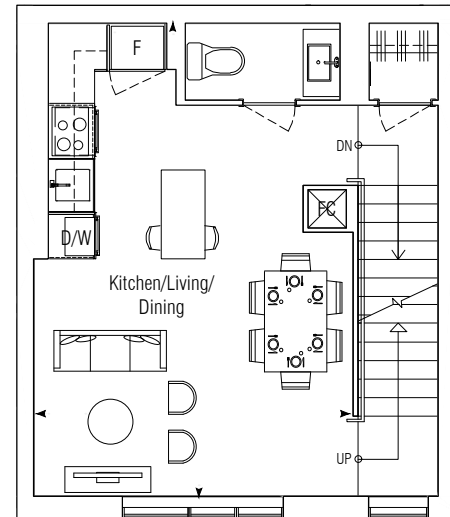
ALL DIMENSIONS AND SPECIFICATIONS ARE APPROXIMATE. CERTAIN PLANS ARE REVERSE OR MIRROR IMAGE. BALCONY SQUARE FOOTAGES ARE ESTIMATED AND MAY VARY FROM THAT STATED. PLEASE SEE SALES REPRESENTATIVE FOR DETAILS. FURNITURE NOT INCLUDED. REFER TO KEY PLAN FOR UNIT LOCATION AND ORIENTATION. PREPARED MAR 8, 2021

TH-09

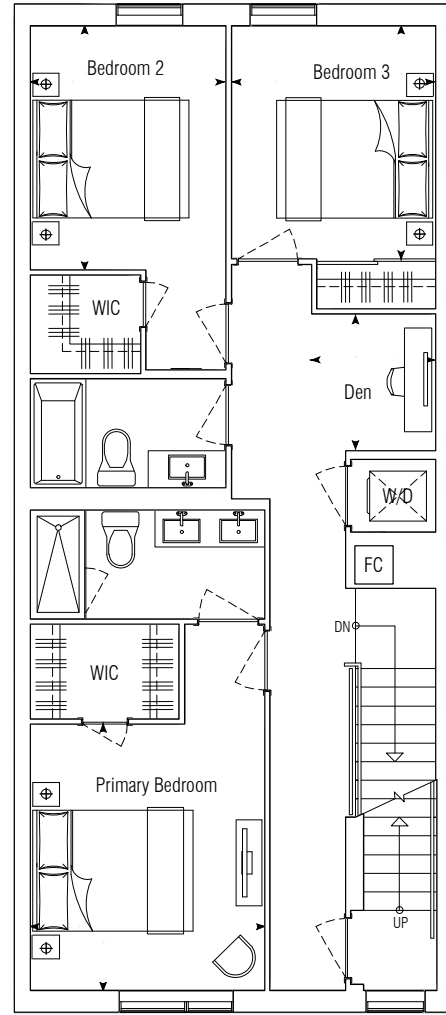
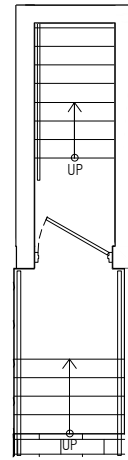
THE WILLOWS TOWNHOME COLLECTION

3 BEDROOM + DEN
 INTERIOR: 1355 SQ.FT.
 EXTERIOR: 824 SQ.FT.
 TOTAL: 2179 SQ.FT.

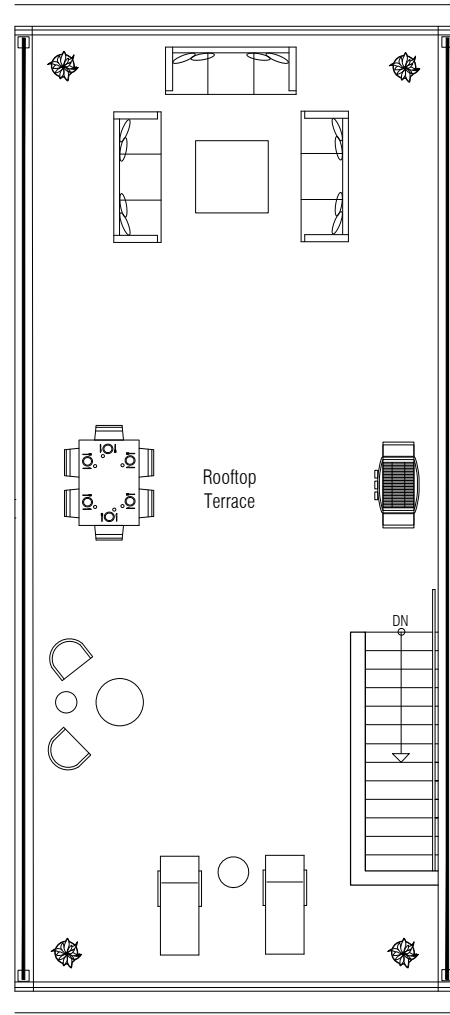
KITCHEN/LIVING/DINING 14'-0" x 21'-3"
 PRIMARY BEDROOM 10'-6" x 12'-0"
 BEDROOM 2 8'-9" x 11'-0"
 BEDROOM 3 9'-0" x 10'-6"
 DEN 5'-6" x 6'-0"



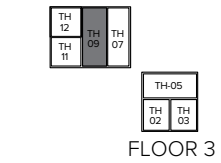
LOWER (MEZZ.)



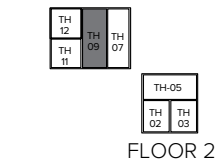
UPPER (FLOOR 2)



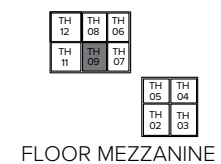
ROOF (FLOOR 3)



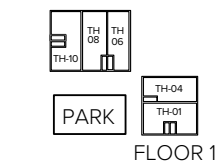
FLOOR 3



FLOOR 2



FLOOR MEZZANINE



FLOOR 1

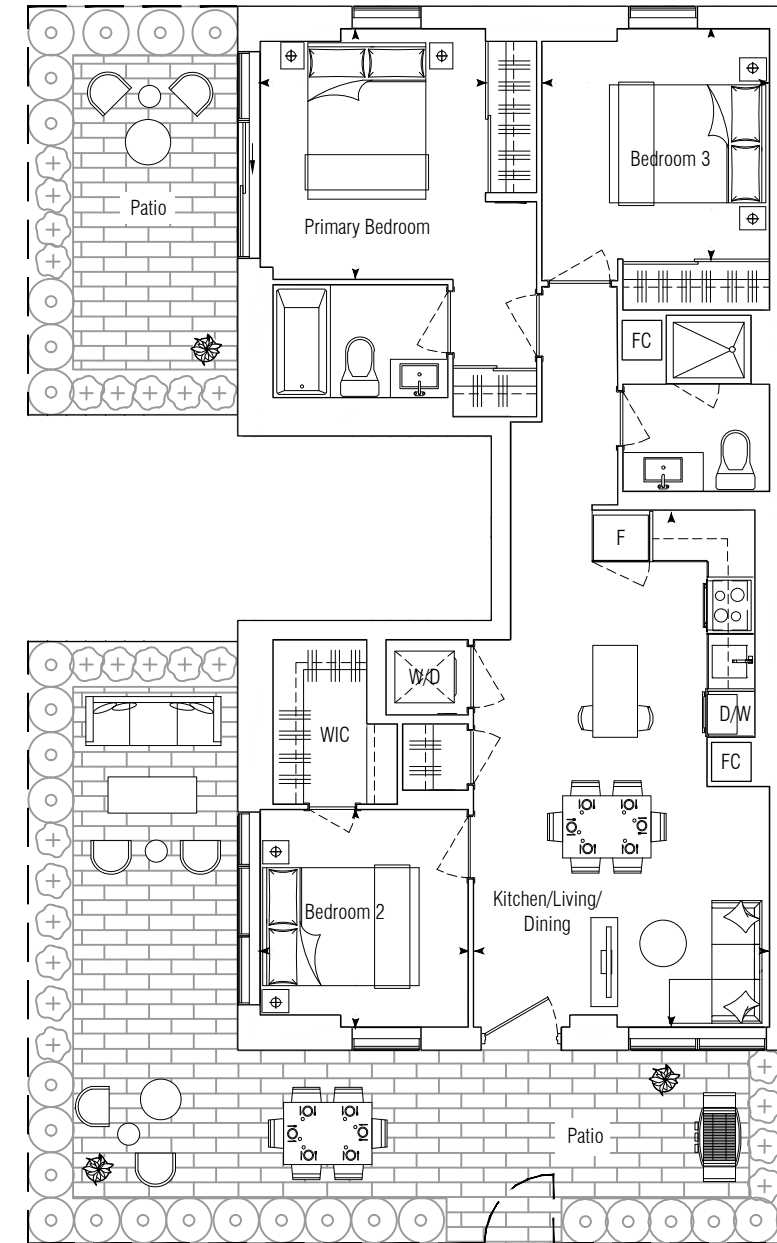
ALL DIMENSIONS AND SPECIFICATIONS ARE APPROXIMATE. CERTAIN PLANS ARE REVERSE OR MIRROR IMAGE. BALCONY SQUARE FOOTAGES ARE ESTIMATED AND MAY VARY FROM THAT STATED. PLEASE SEE SALES REPRESENTATIVE FOR DETAILS. FURNITURE NOT INCLUDED. REFER TO KEY PLAN FOR UNIT LOCATION AND ORIENTATION. PREPARED MAR 8, 2021

TH-10

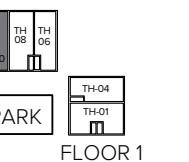
THE WILLOWS TOWNHOME COLLECTION

3 BEDROOM
 INTERIOR: 959 SQ.FT.
 EXTERIOR: 437 SQ.FT + 162 SQ.FT.
 TOTAL: 1558 SQ.FT.

KITCHEN/LIVING/DINING 12'-9" x 22'-3"
 PRIMARY BEDROOM 9'-9" x 10'-9"
 BEDROOM 2 9'-0" x 9'-6"
 BEDROOM 3 9'-9" x 10'-0"



ALL DIMENSIONS AND SPECIFICATIONS ARE APPROXIMATE. CERTAIN PLANS ARE REVERSE OR MIRROR IMAGE. BALCONY SQUARE FOOTAGES ARE ESTIMATED AND MAY VARY FROM THAT STATED. PLEASE SEE SALES REPRESENTATIVE FOR DETAILS. FURNITURE NOT INCLUDED. REFER TO KEY PLAN FOR UNIT LOCATION AND ORIENTATION. PREPARED MAR 8, 2021



FLOOR 1

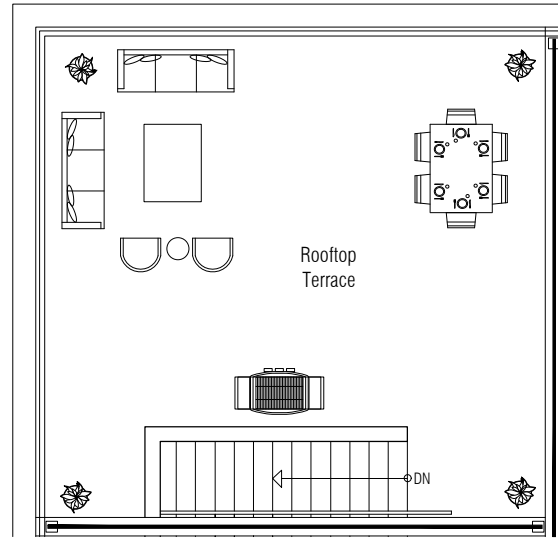


TH-11

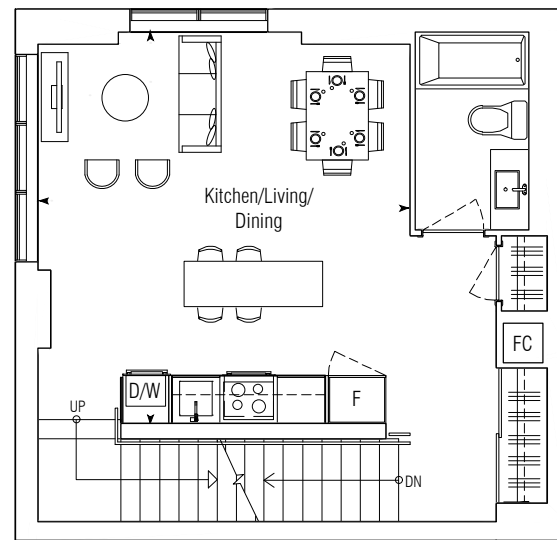
THE WILLOWS TOWNHOME COLLECTION

2 BEDROOM
 INTERIOR: 1123 SQ.FT.
 EXTERIOR: 495 SQ.FT.
 TOTAL: 1618 SQ.FT.

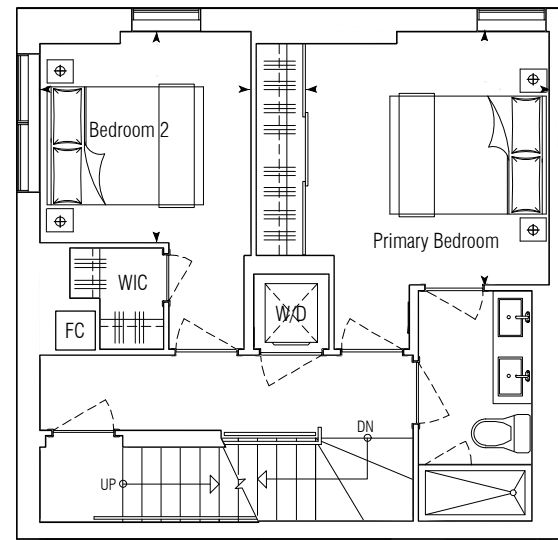
KITCHEN/LIVING/DINING 16'-0" x 17'-0"
 PRIMARY BEDROOM 10'-6" x 11'-0"
 BEDROOM 2 9'-0" x 9'-0"



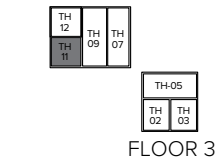
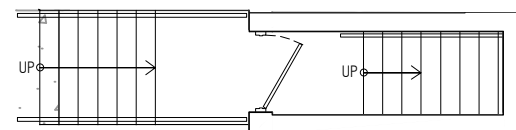
ROOF (FLOOR 3)



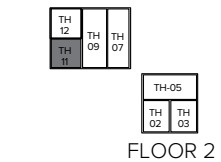
LOWER (MEZZ.)



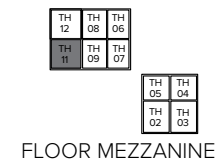
UPPER (FLOOR 2)



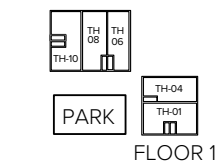
FLOOR 3



FLOOR 2



FLOOR MEZZANINE



FLOOR 1

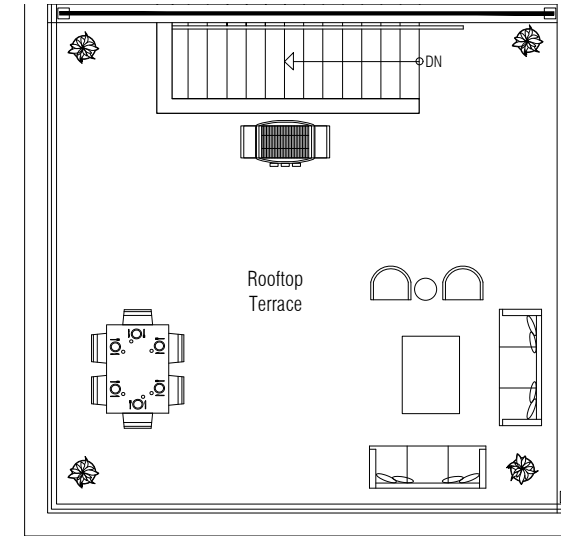
ALL DIMENSIONS AND SPECIFICATIONS ARE APPROXIMATE. CERTAIN PLANS ARE REVERSE OR MIRROR IMAGE. BALCONY SQUARE FOOTAGES ARE ESTIMATED AND MAY VARY FROM THAT STATED. PLEASE SEE SALES REPRESENTATIVE FOR DETAILS. FURNITURE NOT INCLUDED. REFER TO KEY PLAN FOR UNIT LOCATION AND ORIENTATION. PREPARED MAR 8, 2021

TH-12

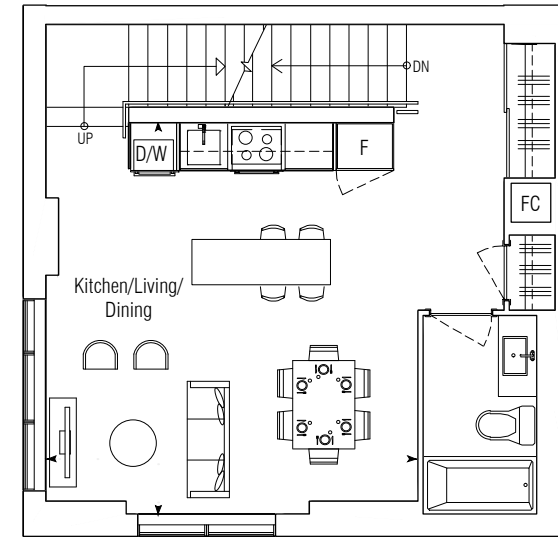
THE WILLOWS TOWNHOME COLLECTION

2 BEDROOM
 INTERIOR: 1123 SQ.FT.
 EXTERIOR: 495 SQ.FT.
 TOTAL: 1618 SQ.FT.

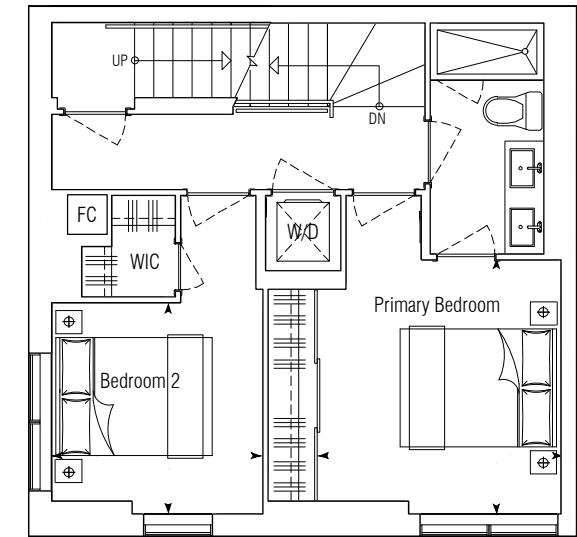
KITCHEN/LIVING/DINING 16'-0" x 17'-0"
 PRIMARY BEDROOM 10'-6" x 11'-0"
 BEDROOM 2 9'-0" x 9'-0"



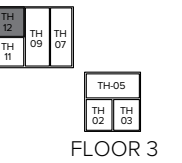
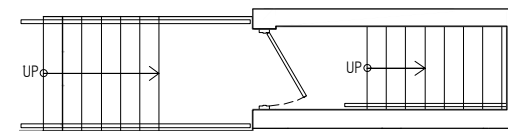
ROOF (FLOOR 3)



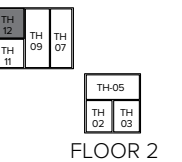
LOWER (MEZZ.)



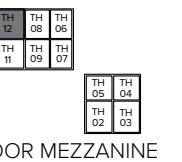
UPPER (FLOOR 2)



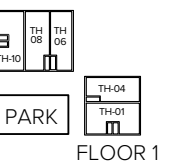
FLOOR 3



FLOOR 2



FLOOR MEZZANINE



FLOOR 1

ALL DIMENSIONS AND SPECIFICATIONS ARE APPROXIMATE. CERTAIN PLANS ARE REVERSE OR MIRROR IMAGE. BALCONY SQUARE FOOTAGES ARE ESTIMATED AND MAY VARY FROM THAT STATED. PLEASE SEE SALES REPRESENTATIVE FOR DETAILS. FURNITURE NOT INCLUDED. REFER TO KEY PLAN FOR UNIT LOCATION AND ORIENTATION. PREPARED MAR 8, 2021

FEATURES & FINISHES

BUILDING FEATURES

- 16-hour concierge controlling building access and surveillance of the building
- Fitness Centre and Yoga Studio
- Exclusively appointed amenity spaces featuring a Communal Work Lounge, Media Lounge, Pet Spa and Social Lounge with private dining area
- Outdoor amenity terrace featuring two-sided fireplace, BBQ area, dining space and lounge

Candere | SMARTLYNC™

- Digital building access
- Guest access
- Remote temperature control
- Discounted internet on a single bill

TOWNHOME FEATURES

- Private Terrace or Patio as per plan
- Gas BBQ bib on terrace or patio as per plan
- Water hose bib on terrace or patio as per plan

KITCHEN

- Feature ribbed glass upper cabinetry. Choice of 3 colours from Vendor's sample package
- Integrated Miele 30" refrigerator, cooktop and oven
- Integrated Miele hood fan, dishwasher and microwave
- Stone countertop and backsplash as per plan
- Fixed island with lowered dining surface and stone countertop with waterfall edge as per plan
- Brass cabinet hardware and appliance pulls

MASTER BATHROOM

- Solid-surface countertop and backsplash with integrated sink(s) as per plan
- Brass fixtures
- Soaker tub as per plan
- Full height stone tiles on bathtub walls and surround or shower enclosure as per plan
- Stone tile flooring for bathrooms and shower stalls

FLOOR COVERINGS

- Engineered hardwood flooring



LEGENDARY SUCCESS AT DNA CONDOMINIUMS

This modern, architecturally monumental condominium designed by Graziani + Corazza Architects laid the groundwork for Toronto's dynamic King West Village, and was one of the city's hottest properties when it went on the market in 2002. Offering urban living at its best, DNA's interior was created by award-winning II BY IV DESIGN, who outfitted each of its 308 units with luxury amenities that at the time were considered unusual, like stainless steel appliances, granite countertops, and gas ranges and barbecue hookups. Nine-foot ceilings and open-concept living areas inside DNA and an exciting choice of restaurants, bars and retail at street level attracted young professionals drawn to innovative design, high-end finishes and quick, easy access to Toronto's downtown core. Completed in 2006, the building offers a variety of layouts as well as terraced penthouses with gorgeous views of the city. The success followed by DNA2 and DNA3 condominiums rounded off the trilogy by Canderel to make this the most sought after buildings to live in King West Village.

AWARD-WINNING RESIDENCES OF COLLEGE PARK

The Residences of College Park is a master-planned community centrally located in downtown Toronto, seconds from some of the best shopping, dining and entertainment in Canada (including the Eaton Centre, Yonge Street and Yorkville) and well placed in relation to transit and top educational institutions. The community is made up of four high-rise residential towers, including the award-winning YC Condos and Aura. All are located close to a 1.9-acre park, College Park – a tranquil escape tucked away from the hustle and bustle of the surrounding streets.

The park design process was part of a place-making initiative that involved adjacent businesses, residents and other stakeholders. It is the second largest park in downtown Toronto after Allan Gardens. With development launching in 2002 and finishing in 2019 following the completion of YC Condos, this community has added a total of 2,856 condominium units to Toronto and over 225,000 square feet of retail space. In September 2020, Canderel was awarded the BILD Best New Community (Built) Award for The Residences of College Park.

BAYVIEW AT THE VILLAGE™ IS NEXT

The rejuvenation and growth of the Bayview Village neighbourhood is certain, and Canderel will be playing a starring role in the transformation of Sheppard Ave., including a condominium, townhomes, retail, and a brand new green space to round out the project. Bayview at The Village™, a new community steeped in luxury, will set the standard and elevate expectations about how residents of this newly rejuvenated area wish to live.

⌄ Canderel



RAD MARKETING

Sales & Marketing Consultant

Trademark used under license from bcIMC Realty Corporation.