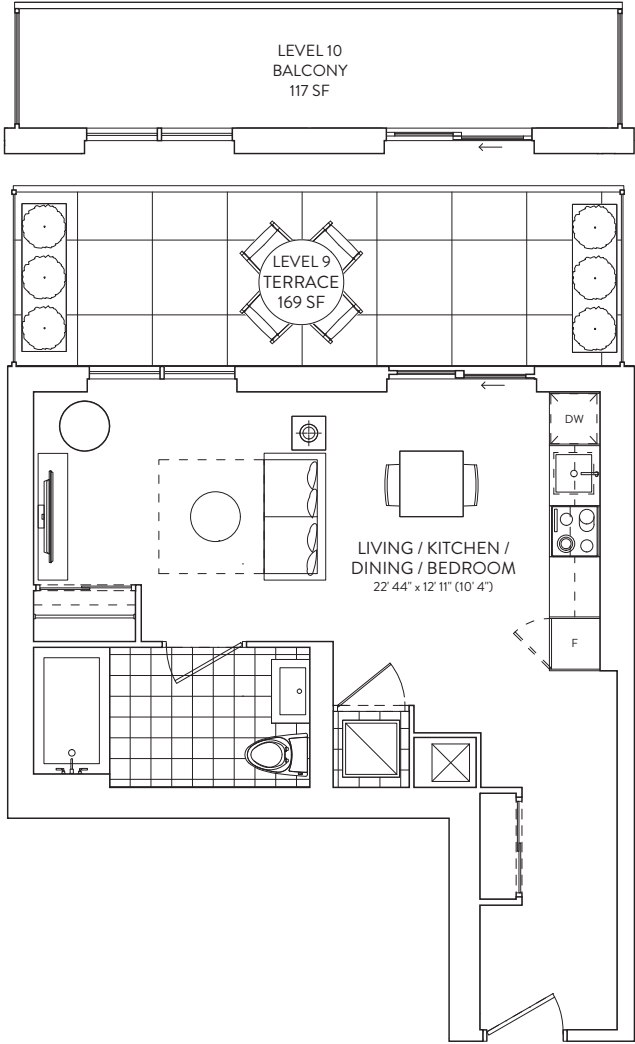


STUDIO 04/05

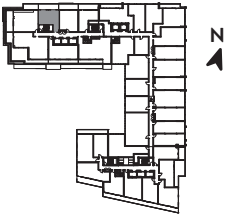
01 GALLERIA

STUDIO
1 BATHROOM

INTERIOR: 493 SF.
EXTERIOR: TERRACE 169 SF., BALCONY 117 SF.



FLOORS 9-10



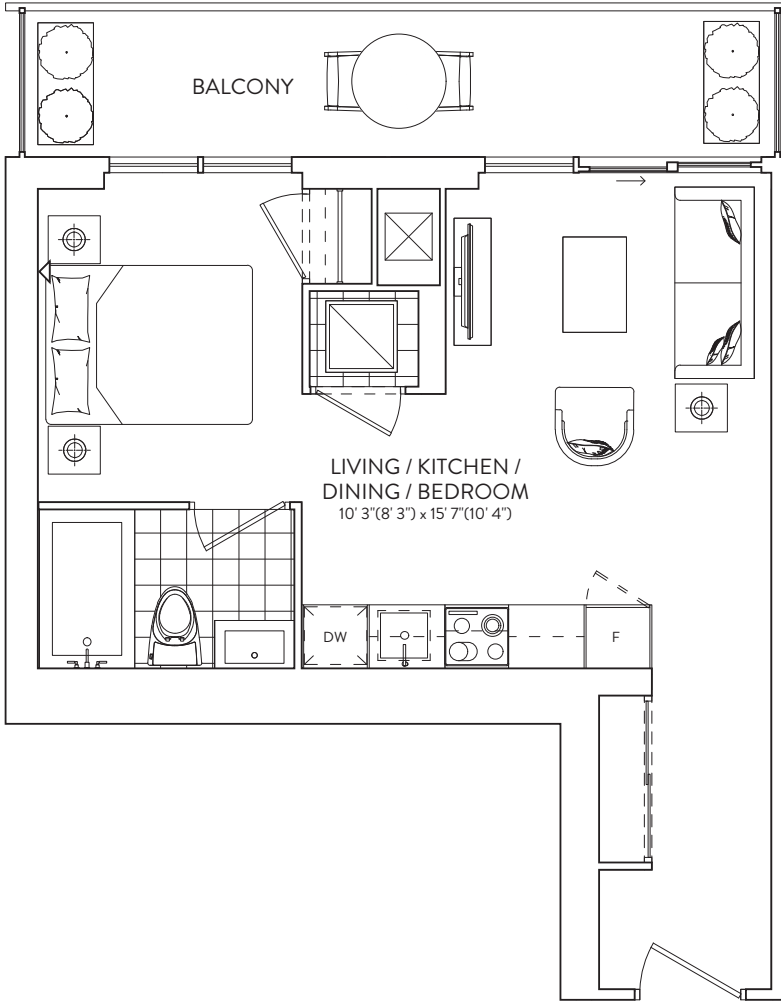
This plan is not to scale and is subject to architectural review and revision. The number of units per level and the number of floors may be reduced or increased at the vendor's sole discretion without notice. The purchaser acknowledges that the actual unit purchased may be a reverse layout to the plan shown. All materials, specifications, details and dimensions, if any, are approximate and subject to change without notice in order to comply with building site conditions and municipal, structural, vendor and/or architectural requirements. Actual living areas may vary from floor areas stated. Floor areas have been measured and may vary in accordance with Bulletin #22 published by the Tarion Warranty Corporation. Bulkheads are not shown on this plan and may be located in areas of the Unit as required to provide venting and mechanical systems. Balconies, Terraces and Patios, if any, are exclusive use common elements shown for display purposes only and location and size are subject to change without notice. Window location, size and type may vary without notice. The length, width and directional position of the flooring are for illustration purposes only and may vary without notice. E.&O.E.

STUDIO 05

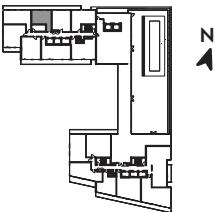
01 GALLERIA

STUDIO
1 BATHROOM

INTERIOR: 493 SF.
EXTERIOR: 117 SF.
TOTAL: 610 SF.



FLOORS 12, 13-22



This plan is not to scale and is subject to architectural review and revision. The number of units per level and the number of floors may be reduced or increased at the vendor's sole discretion without notice. The purchaser acknowledges that the actual unit purchased may be a reverse layout to the plan shown. All materials, specifications, details and dimensions, if any, are approximate and subject to change without notice in order to comply with building site conditions and municipal, structural, vendor and/or architectural requirements. Actual living areas may vary from floor areas stated. Floor areas have been measured and may vary in accordance with Bulletin #22 published by the Tarion Warranty Corporation. Bulkheads are not shown on this plan and may be located in areas of the Unit as required to provide venting and mechanical systems. Balconies, Terraces and Patios, if any, are exclusive use common elements shown for display purposes only and location and size are subject to change without notice. Window location, size and type may vary without notice. The length, width and directional position of the flooring are for illustration purposes only and may vary without notice. E.&O.E.