

KING

HOME 506 5



1BD.01F

1 Bedroom + Atelier
1 Bathroom

Total Living:
724 ft²

Interior Living:
652 ft²

Exterior Living:
72 ft²

| | |
|----------------|------------------|
| LIVING | 10' 11" X 10' 3" |
| DINING | 10' 6" X 8' 6" |
| BEDROOM | 10' 2" X 9' 10" |
| ATELIER | 7' 1" X 4' 8" |
| BALCONY | 11' 0" X 4' 11" |



All dimensions and specifications are approximate. Certain plans are reverse or mirror image. Balcony square footages are estimated and may vary from that stated. Please see Sales Representative for details. Furniture not included. Refer to key plan for unit location and orientation. E. & O.E.

KING

HOME 507 5



2BD.67B

2 Bedroom + Atelier
2 Bathroom

Total Living:
1185 ft²

Interior Living:
1113 ft²

Exterior Living:
72 ft²

| | |
|---------------------------|-----------------|
| LIVING/ DINING | 12' 0" X 18' 3" |
| MASTER BD | 11' 2" x 11' 7" |
| BEDROOM 2 | 9' 10" x 11' 2" |
| ATELIER | 5' 5" x 4' 8" |
| BALCONY | 11' 0" x 4' 11" |

COURTYARD



SOUTH MOUNTAIN KEYPLAN

All dimensions and specifications are approximate. Certain plans are reverse or mirror image. Balcony square footages are estimated and may vary from that stated. Please see Sales Representative for details. Furniture not included. Refer to key plan for unit location and orientation. E. 6 O.E.

KING

HOME 508 5



1BD.01F

**1 Bedroom + Atelier
1 Bathroom**

**Total Living:
724 ft²**

Interior Living:
652 ft²

Exterior Living:
72 ft²

| | |
|----------------|------------------|
| LIVING | 10' 11" X 10' 3" |
| DINING | 10' 6" X 8' 6" |
| BEDROOM | 10' 2" X 9' 10" |
| ATELIER | 7' 1" X 4' 8" |
| BALCONY | 11' 0" X 4' 11" |

COURTYARD



SOUTH MOUNTAIN KEYPLAN

All dimensions and specifications are approximate. Certain plans are reverse or mirror image. Balcony square footages are estimated and may vary from that stated. Please see Sales Representative for details. Furniture not included. Refer to key plan for unit location and orientation. E. & O. E.

KING

HOME 606 5



1BD.01F

1 Bedroom + Atelier
1 Bathroom

Total Living:
724 ft²

Interior Living:
652 ft²

Exterior Living:
72 ft²

| | |
|----------------|------------------|
| LIVING | 10' 11" X 10' 3" |
| DINING | 10' 6" X 8' 6" |
| BEDROOM | 10' 2" X 9' 10" |
| ATELIER | 7' 1" X 4' 8" |
| BALCONY | 11' 0" X 4' 11" |

COURTYARD



SOUTH MOUNTAIN KEYPLAN

All dimensions and specifications are approximate. Certain plans are reverse or mirror image. Balcony square footages are estimated and may vary from that stated. Please see Sales Representative for details. Furniture not included. Refer to key plan for unit location and orientation. E. 6 0.E.

KING

HOME 607 S



2BD.67B

**2 Bedroom + Atelier
2 Bathroom**

**Total Living:
1185 ft²**

Interior Living:
1113 ft²

Exterior Living:
72 ft²

| | |
|---------------------------|-----------------|
| LIVING/ DINING | 12' 0" X 18' 3" |
| MASTER BD | 11' 2" x 11' 7" |
| BEDROOM 2 | 9' 10" x 11' 2" |
| ATELIER | 5' 5" x 4' 8" |
| BALCONY | 11' 0" x 4' 11" |



All dimensions and specifications are approximate. Certain plans are reverse or mirror image. Balcony square footages are estimated and may vary from that stated. Please see Sales Representative for details. Furniture not included. Refer to key plan for unit location and orientation. E. & O.E.

KING

HOME 608 5



1BD.01F

1 Bedroom + Atelier
1 Bathroom

Total Living:
725 ft²

Interior Living:
653 ft²

Exterior Living:
72 ft²

| | |
|----------------|------------------|
| LIVING | 10' 11" X 10' 3" |
| DINING | 10' 6" X 8' 6" |
| BEDROOM | 10' 2" X 9' 10" |
| ATELIER | 7' 1" X 4' 8" |
| BALCONY | 11' 0" X 4' 11" |

COURTYARD



SOUTH MOUNTAIN KEYPLAN

All dimensions and specifications are approximate. Certain plans are reverse or mirror image. Balcony square footages are estimated and may vary from that stated. Please see Sales Representative for details. Furniture not included. Refer to key plan for unit location and orientation. E. 6 0.E.

KING

HOME 705 S



1BD.01B

1 Bedroom + Atelier
1 Bathroom

Total Living:
852 ft²

Interior Living:
709 ft²

Exterior Living:
143 ft²

| | |
|----------------|------------------|
| LIVING | 17' 3" X 9' 6" |
| DINING | 12' 8" X 9' 7" |
| BEDROOM | 10' 10" X 8' 10" |
| ATELIER | 6' 2" X 5' 9" |
| TERRACE | 6' 8" X 9' 1" |

COURTYARD



SOUTH MOUNTAIN KEYPLAN

All dimensions and specifications are approximate. Certain plans are reverse or mirror image. Balcony square footages are estimated and may vary from that stated. Please see Sales Representative for details. Furniture not included. Refer to key plan for unit location and orientation. E. & O.E.

KING

HOME 706 S



1BD.18B

**1 Bedroom + Atelier
1 Bathroom**

**Total Living:
812 ft²**

Interior Living:
669 ft²

Exterior Living:
143 ft²

| | |
|----------------|----------------|
| LIVING | 11' 9" X 8' 4" |
| DINING | 7' 6" X 10' 6" |
| BEDROOM | 11' 2" X 9' 4" |
| ATELIER | 4' 10" X 6' 2" |
| TERRACE | 9' 1" X 9' 1" |

COURTYARD



SOUTH MOUNTAIN KEYPLAN

All dimensions and specifications are approximate. Certain plans are reverse or mirror image. Balcony square footages are estimated and may vary from that stated. Please see Sales Representative for details. Furniture not included. Refer to key plan for unit location and orientation. E. & O.E.

KING

HOME 806 S



2BD.69

**2 Bedroom
2 Bathroom**

**Total Living:
1143 ft²**

Interior Living:
1000 ft²

Exterior Living:
143 ft²

| | |
|------------------|-------------------|
| LIVING | 11' 11" X 10' 11" |
| DINING | 12' 7" X 9' 6" |
| MASTER BD | 9' 8" X 12' 1" |
| BEDROOM 2 | 12' 1" X 8' 9" |
| TERRACE | 9' 1" X 9' 1" |

COURTYARD



SOUTH MOUNTAIN KEYPLAN

All dimensions and specifications are approximate. Certain plans are reverse or mirror image. Balcony square footages are estimated and may vary from that stated. Please see Sales Representative for details. Furniture not included. Refer to key plan for unit location and orientation. E. & O.E.

KING

HOME 807 S



2BD.68

**2 Bedroom + Atelier
2 Bathroom**

**Total Living:
1208 ft²**

Interior Living:
998 ft²

Exterior Living:
64 ft²

| | |
|------------------|------------------|
| LIVING | 11' 8" x 12' 0" |
| DINING | 11' 11" x 10' 9" |
| MASTER BD | 11' 3" x 13' 3" |
| BEDROOM 2 | 9' 10" x 11' 2" |
| ATELIER | 5' 5" x 5' 5" |
| BALCONY | 9' 6" x 4' 11" |

COURTYARD



SOUTH MOUNTAIN KEYPLAN

All dimensions and specifications are approximate. Certain plans are reverse or mirror image. Balcony square footages are estimated and may vary from that stated. Please see Sales Representative for details. Furniture not included. Refer to key plan for unit location and orientation. E. 6 D.E.

KING

HOME 809 S



2BD.75A

2 Bedroom
2 Bathroom

Total Living:
1318 ft²

Interior Living:
1158 ft²

Exterior Living:
160 ft²

| | |
|------------------|-----------------|
| LIVING | 12' 8" X 13' 5" |
| DINING | 15' 1" x 7' 10" |
| MASTER BD | 13' 1" X 9' 10" |
| BEDROOM 2 | 14' 4" x 10' 4" |
| BALCONY | 13' 0" x 7' 9" |
| TERRACE | 6' 4" x 3' 6" |

COURTYARD



SOUTH MOUNTAIN KEYPLAN

All dimensions and specifications are approximate. Certain plans are reverse or mirror image. Balcony square footages are estimated and may vary from that stated. Please see Sales Representative for details. Furniture not included. Refer to key plan for unit location and orientation. E. & O. E.

KING

HOME 902 5



2BD.76

**2 Bedroom + Atelier
2 Bathroom**

**Total Living:
1208 ft²**

Interior Living:
1136 ft²

Exterior Living:
72 ft²

| | |
|------------------|------------------|
| LIVING | 10' 0" x 9' 3" |
| DINING | 10' 11" x 11' 9" |
| MASTER BD | 12' 0" x 11' 8" |
| BEDROOM 2 | 9' 8" x 9' 2" |
| ATELIER | 6' 10" x 6' 10" |
| TERRACE | 3' 6" x 6' 4" |

COURTYARD

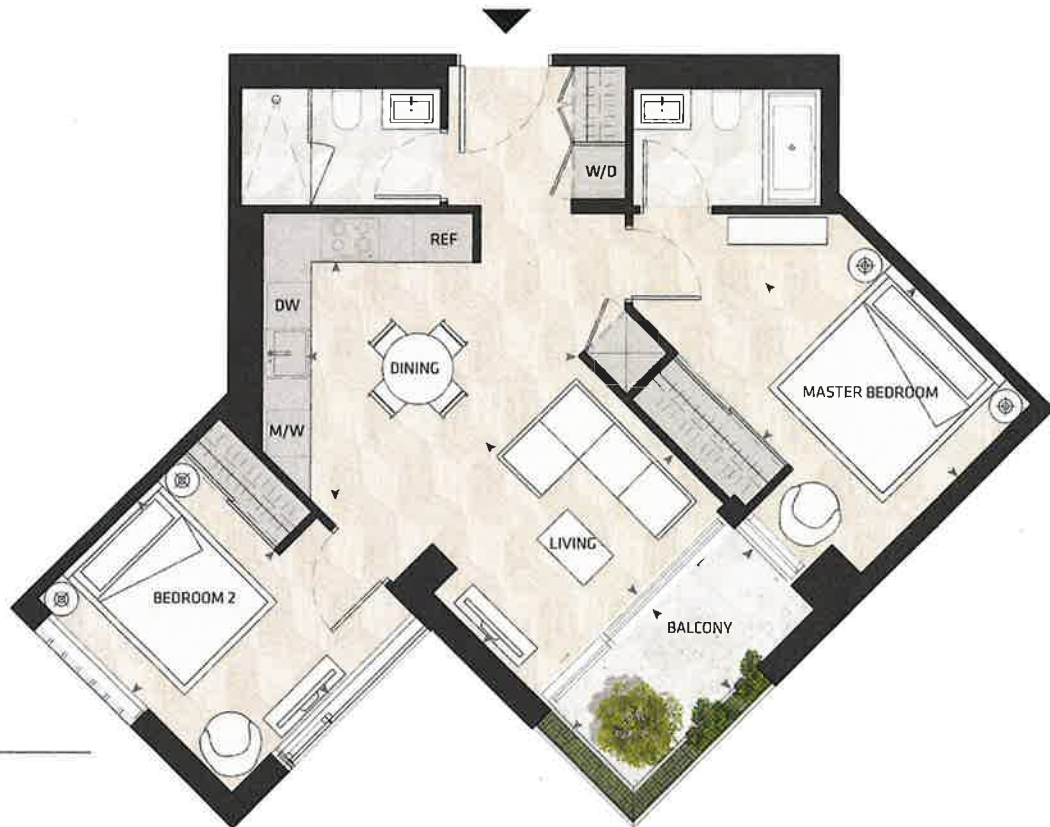


SOUTH MOUNTAIN KEYPLAN

All dimensions and specifications are approximate. Certain plans are reverse or mirror image. Balcony square footages are estimated and may vary from that stated. Please see Sales Representative for details. Furniture not included. Refer to key plan for unit location and orientation. E. 6 D.E.

KING

HOME 903 S



2BD.46

2 Bedroom
2 Bathroom

Total Living:
889 ft²

Interior Living:
817 ft²

Exterior Living:
72 ft²

| | |
|------------------|-----------------|
| LIVING | 11' 4" X 9' 0" |
| DINING | 11' 3" X 10' 1" |
| MASTER BD | 9' 1" X 11' 11" |
| BEDROOM 2 | 11' 6" X 8' 6" |
| BALCONY | 11' 0" X 4' 11" |

COURTYARD



SOUTH MOUNTAIN KEYPLAN

All dimensions and specifications are approximate. Certain plans are reverse or mirror image. Balcony square footages are estimated and may vary from that stated. Please see Sales Representative for details. Furniture not included. Refer to key plan for unit location and orientation. E. & O.E.

KING

HOME 905 S



2BD.77

2 Bedroom + Atelier
2 Bathroom

Total Living:
1213 ft²

Interior Living:
1141 ft²

Exterior Living:
72 ft²

| | |
|---------------------------|-----------------|
| LIVING/ DINING | 10' 6" X 16' 9" |
| MASTER BD | 12' 0" X 9' 4" |
| BEDROOM 2 | 9' 5" - 9' 10" |
| ATELIER | 9' 2" X 7' 9" |
| BALCONY | 11' 0" X 4' 11" |

COURTYARD



SOUTH MOUNTAIN KEYPLAN

All dimensions and specifications are approximate. Certain plans are reverse or mirror image. Balcony square footages are estimated and may vary from that stated. Please see Sales Representative for details. Furniture not included. Refer to key plan for unit location and orientation. E. & O. E.

KING

HOME 906 5



2BD.70

**2 Bedroom
2 Bathroom**

**Total Living:
1179 ft²**

Interior Living:
1036 ft²

Exterior Living:
143 ft²

| | |
|------------------|-----------------|
| LIVING | 9' 4" X 12' 10" |
| DINING | 11' 0" X 9' 0" |
| MASTER BD | 11' 4" X 10' 9" |
| BEDROOM 2 | 10' 9" X 9' 4" |
| TERRACE | 9' 1" X 9' 1" |

COURTYARD

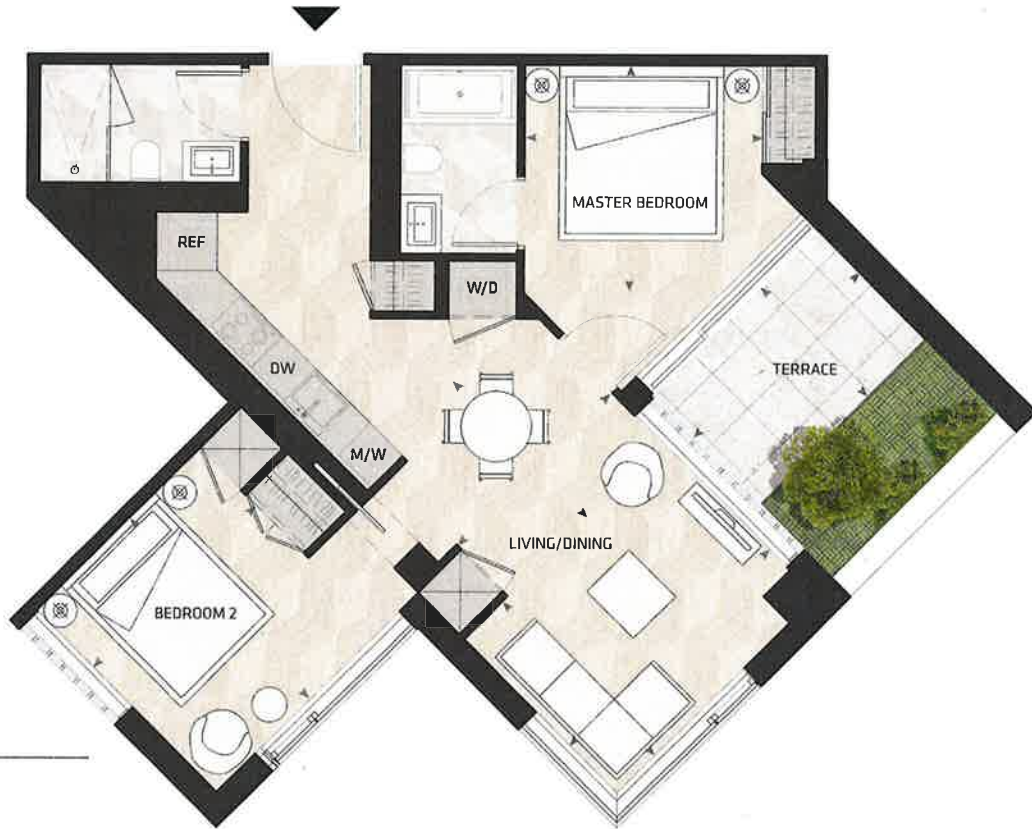


SOUTH MOUNTAIN KEYPLAN

All dimensions and specifications are approximate. Certain plans are reverse or mirror image. Balcony square footages are estimated and may vary from that stated. Please see Sales Representative for details. Furniture not included. Refer to key plan for unit location and orientation. E. 6 Q.E.

KING

HOME 907 S



2BD.30

2 Bedroom
2 Bathroom

Total Living:
950 ft²

Interior Living:
830 ft²

Exterior Living:
120 ft²

| | |
|------------------|-----------------|
| LIVING | 11' 10" X 9' 2" |
| DINING | 9' 2" X 9' 11" |
| MASTER BD | 9' 11" X 9' 8" |
| BEDROOM 2 | 9' 8" X 11' 1" |
| TERRACE | 10' 0" X 6' 9" |

COURTYARD

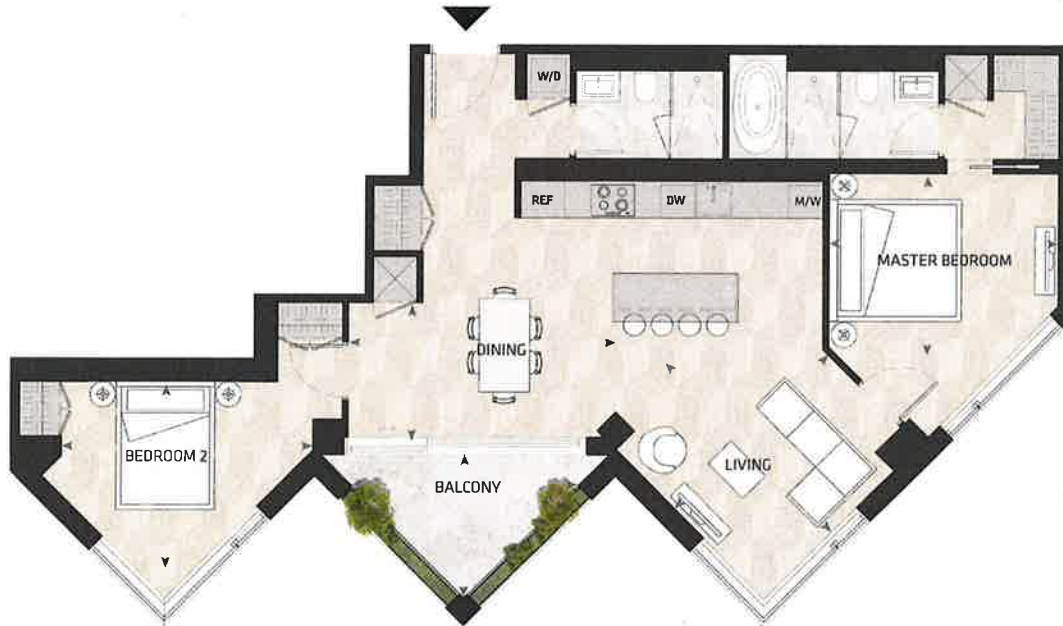


SOUTH MOUNTAIN KEYPLAN

All dimensions and specifications are approximate. Certain plans are reverse or mirror image. Balcony square footages are estimated and may vary from that stated. Please see Sales Representative for details. Furniture not included. Refer to key plan for unit location and orientation. E. G. O. E.

KING

HOME 909 S



2BD.75B

2 Bedroom
2 Bathroom

Total Living:
1246 ft²

Interior Living:
1158 ft²

Exterior Living:
88 ft²

| | |
|------------------|-----------------|
| LIVING | 12' 8" X 13' 5" |
| DINING | 15' 1" x 7' 10" |
| MASTER BD | 13' 1' X 9' 10" |
| BEDROOM 2 | 14' 4" x 10' 4" |
| BALCONY | 13' 0" x 7' 9" |

COURTYARD



SOUTH MOUNTAIN KEYPLAN

All dimensions and specifications are approximate. Certain plans are reverse or mirror image. Balcony square footages are estimated and may vary from that stated. Please see Sales Representative for details. Furniture not included. Refer to key plan for unit location and orientation. E. 6 0 E.

KING

HOME 1001 S



3BD.55

**3 Bedroom
2 Bathroom**

**Total Living:
1663 ft²**

Interior Living:
1591 ft²

Exterior Living:
72 ft²

| | |
|------------------|------------------|
| LIVING | 10' 6" X 12' 0" |
| DINING | 15' 2" X 12' 0" |
| MASTER BD | 10' 10" X 9' 10" |
| BEDROOM 2 | 10' 7" X 11' 8" |
| BEDROOM 3 | 14' 5" X 8' 9" |
| ATELIER | 5' 4" X 5' 11" |
| BALCONY | 11' 0" X 4' 11" |

COURTYARD

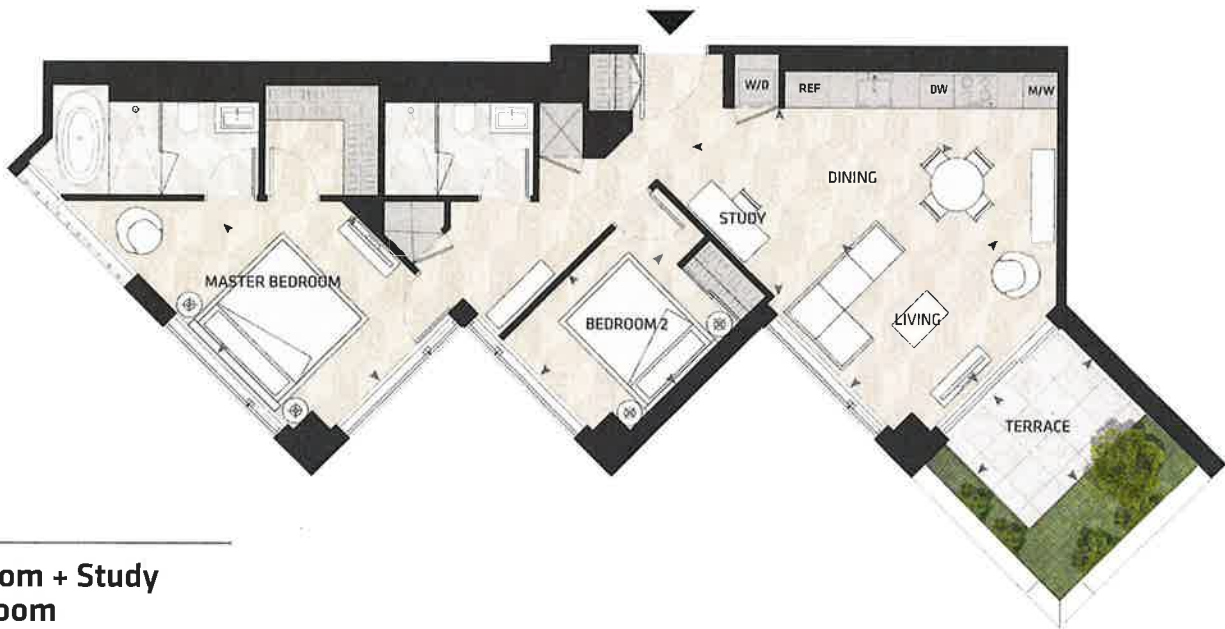


SOUTH MOUNTAIN KEYPLAN

All dimensions and specifications are approximate. Certain plans are reverse or mirror image. Balcony square footages are estimated and may vary from that stated. Please see Sales Representative for details. Furniture not included. Refer to key plan for unit location and orientation. E. & O.E.

KING

HOME 1103 S



2BD.71

**2 Bedroom + Study
2 Bathroom**

**Total Living:
1223 ft²**

Interior Living:
1080 ft²

Exterior Living:
143 ft²

| | |
|------------------|------------------|
| LIVING | 12' 7" x 11' 11" |
| DINING | 10' 11" x 10' 7" |
| MASTER BD | 11' 0" x 11' 10" |
| BEDROOM 2 | 9' 11" x 12' 0" |
| TERRACE | 9' 1" x 5' 8" |

COURTYARD



SOUTH MOUNTAIN KEYPLAN

All dimensions and specifications are approximate. Certain plans are reverse or mirror image. Balcony square footages are estimated and may vary from that stated. Please see Sales Representative for details. Furniture not included. Refer to key plan for unit location and orientation. E. G. D.E.

KING

HOME 1105 S



3BD.14

**3 Bedroom
2 Bathroom**

**Total Living:
1377 ft²**

Interior Living:
1233 ft²

Exterior Living:
144 ft²

| | |
|------------------|-----------------|
| LIVING | 11' 9" X 11' 9" |
| DINING | 11' 10" X 9' 7" |
| MASTER BD | 8' 9" X 10' 0" |
| BEDROOM 2 | 8' 6" X 10' 9" |
| BEDROOM 3 | 10' 9" X 13' 5" |
| TERRACE | 9' 1" X 6' 8" |

COURTYARD



SOUTH MOUNTAIN KEYPLAN

All dimensions and specifications are approximate. Certain plans are reverse or mirror image. Balcony square footages are estimated and may vary from that stated. Please see Sales Representative for details. Furniture not included. Refer to key plan for unit location and orientation. E. & O.E.

KING

HOME 1201 S



3BD.58

**3 Bedroom
2 Bathroom**

**Total Living:
1721 ft²**

**Interior Living:
1411 ft²**

**Exterior Living:
310 ft²**

| | |
|------------------|-----------------|
| LIVING | 12' 0" X 13' 5" |
| DINING | 12' 6" X 10' 1" |
| MASTER BD | 12' 5" X 10' 3" |
| BEDROOM 2 | 10' 2" X 11' 0" |
| BEDROOM 3 | 10' 4" X 8' 6" |
| TERRACE | 6' 8" X 8' 3" |

COURTYARD



SOUTH MOUNTAIN KEYPLAN

All dimensions and specifications are approximate. Certain plans are reverse or mirror image. Balcony square footages are estimated and may vary from that stated. Please see Sales Representative for details. Furniture not included. Refer to key plan for unit location and orientation. E. G. O.E.

OPEN HOUSE

Bring your clients to tour the presentation gallery and to pick their suites for the weekend.

**THURSDAY NOVEMBER 8 +
FRIDAY NOVEMBER 9
12PM-6PM**

KING PRESENTATION GALLERY

529 King St. W
Outdoor parking available at
7 Morrison St. & 15 Brant St.

No sales during the open house.

All prices, figures and materials are preliminary and are subject to change without notices.
Renderings are Artist Concept E.&O.E November 7, 2018

